

## Hog Cholera Treatment

### What to Do When This Disease Appears In the Herd

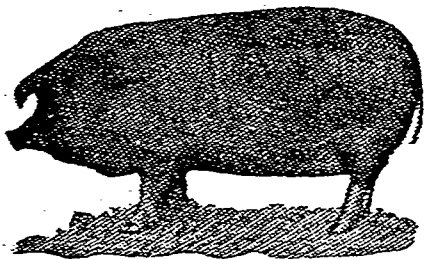
**W**HEN an outbreak of hog cholera occurs on a farm the herd should be quarantined and all possible precautions taken against the spread of the infection in the neighborhood, says Professor R. A. Craig of the Indiana experiment station.

If the houses and yards are well arranged and can be cleaned and disinfected it is not advisable to move the animals, but if the quarters are old and more or less tumbled down and the yards littered with corncocks, manure piles, straw stacks, etc., it is advisable to provide better quarters. Such yards should be well drained. During the warm months of the year plenty of range and protection from the sun and rain are necessary.

Roomy, dry, well ventilated sleeping quarters and yards that have good surface drainage are best when the weather is cool and wet.

In most outbreaks it is advisable to separate the sick from the well hogs. Early in the outbreak and in the subacute form this is practical.

A very light ration consisting of a thin slop of shorts or other ground feed should be fed. Powdered copper sulphate may be given in the feed and drinking water. For convenience of mixing with the feed eight ounces of the powdered drug may be dissolved in one gallon of warm water and one pint of the solution added to each ten



A good Poland China sow, says a breeder, should have shoulders of great depth and fair width, the rib well sprung to give room for the vital organs, and for this same reason the breastbone should be let low down and be wide, filling out the sunken places just back of the front legs or shoulders so noticeable in scrubs. The hips should come forward and connect to the backbone near enough to the shoulders so that the connecting point is a little short of midway of the entire distance from the shoulder to the rear of the ham, thereby making a strong back with good, stout coupling and giving great top and fore length to the ham. This shape of hams and back will give deep, full sides with great length of lower line when well let down in the flanks, enabling the sow to carry a good sized litter without getting so stuffy and clumsy. The Poland China sow shown here is owned by the Michigan Agricultural college.

gallons of slop and water fed. This method of feeding should be used as soon as symptoms of disease are noticed and continued for a time after recovery. The entire herd should be dieted and made to clean up their feed quickly. Water and slop should not be left in the troughs for the hogs to wallow in, and the troughs should be disinfected and turned bottom side up

as soon as the hogs have finished feeding and drinking.

A disinfectant should be sprayed or sprinkled about the feed troughs, floors, sleeping quarters, etc., daily.

The dead hogs should be burned. This is not a difficult task if the bodies are placed on top of a pile of wood that burns quickly and makes a hot fire. If bodies are buried they should be covered with a few inches of lime.

### Sayings of the Derry Church Sage

**T**HE fellow who can get better prices and keep his customers satisfied is the real salesman.

The successful man gets ideas for his own business from everything he sees and hears.

Omnivorous fiction reading is a waste of time.

The brilliant man is not always his own best friend.

The good mixer isn't always the best business man.

If you don't believe in your own ability, others won't.

System in gathering ideas leads to knowledge and power.

Promises are all right if you can and do deliver the goods.

Imagination, plus hard work, pulls the plodder out of the rut.

There's always a way to convert spare moments into dollars.

Mental notes are good things, but pencil and paper are better.

The wise man always has the construction gang a mile ahead.

A live wire can always learn something from every one he meets.

If you can't enthuse over your business quit it and get another.

### P. O. S. of A. Dedication

**A**T Jonestown today the P. O. S. of A. 's will dedicate a new hall. A delegation from Camp No. 705, of Hershey, will attend. At the present time the Hershey camp is in a prosperous condition. There are four propositions on the roll with others promised. All the members are requested to work hard during the next week, in getting propositions, in order to have a large class for the December initiation night.

### Cigar Cutter Works Well

**W**HILE playing with the cigar cutter at the Hershey store one day last week, Harry Keiffer, Jr., put the machine to test by inserting the first finger on his left hand. The cutter worked in good shape and took off the end of the finger. Altho the finger pained him very much Harry shed not a tear while it was being dressed by the druggist, Russel Eshenaur.

## ARE YOU GOING TO BUILD?

GET OUR PRICES

WE CAN SAVE YOU MONEY

Let us make you drawings of  
the house you have in mind

I. T. BASEHORE, (Carpenter  
and Builder)

A Postal will receive prompt attention

HERSHEY, PA.

### Speculation In Rugs

Many Women Are Expert Buyers Of Oriental Treasures.

**O**RIENTAL rugs after a certain amount of wear and tear begin to show the warp and sometimes rip. When this state of shabbiness is reached the sooner they are taken in hand the better. Carpet threads in rug colors may be procured in banks in various places, and a few hours spent in darning and then matching out the design in the over and over sampler stitch makes the rug as good as new. With carefully selected colors for the matching the mended parts will hardly be noticeable. If this simple precaution is not taken the rug becomes unfit for use and either has to be sent to a professional rug maker or repairer or else sold as secondhand.

Oddly enough, however, time lends so much increase in value to some oriental rugs that even in a ragged and worn condition they will bring at an auction double their original price. There they are, of course, quoted as "antiques" by catalogue and auctioneer, a description which their condition certainly justifies.

The last thirty years have seen great advances in rug values, and instances are quoted of rugs which having been bought three decades ago for \$300 are now valued at \$2,000.

Rug collecting has more opportunities for large profits when reselling than most ventures into which the fair sex may go without censure, and as most women have good taste where floor coverings are concerned they rarely choose anything that will not bring at least the full price paid when they want to realize upon it.

The woman expert in rugs soon sees in her mind's eye just how a bedraggled, soiled old rug can be made to look as it hangs beside the auctioneer, and many a dealer knowing this bids only on rugs that some well known woman buyer starts to bid for. Great treasures have been secured in this way that brought immense gain in a short space of time by resale.

#### A Smart Effect.

A girl with an assortment of jabots and frills should study the colors most becoming to her and fashion a number of odd tailor bows and knots of velvet and ribbon to pin at her throat as a sort of fastening for the neckwear. She will be surprised at the smart effect given by the touch of color.

### REPORT OF THE CONDITION OF Hershey Trust Company

of Hershey, Dauphin Co., Pa.,

at the close of business Nov. 6, 1911

#### RESOURCES

Reserve Fund:	
Cash, Specie and Notes	\$ 20,803.00
Due from Approved Reserve Agents	152,192.37
Nickels and cents	795.92
Checks and cash items	894.81
Due from Banks and Trust Cos., not in reserve	7,528.09
Commercial paper purchased, viz:	
Upon two or more names	40,112.15
Loans upon call with collateral	10,515.00
Loans without collateral	41,922.00
Bonds, Stocks, etc.	542,586.75
Mortgages and judgments of record	52,688.61
Other Real Estate	18,750.00
Furniture and fixtures	3,998.00
Overdrafts	26.33
<b>Total</b>	<b>\$892,813.03</b>

#### LIABILITIES

Capital stock paid in	\$125,000.00
Surplus Fund	100,000.00
Undivided profits, less expenses and taxes paid	17,910.00
Individual Deposits subject to check (exclusive of Trust Funds and Savings)	504,793.86
Time Certificates of Deposit (exclusive of Trust Funds and Savings)	83,144.61
Deposits, saving fund (exclusive of Trust Funds and Savings)	16,964.48
Deposits, Commonwealth of Pennsylvania	20,000.00
Due to Banks and Trust Cos. etc., not in reserve	25,000.08
<b>Total</b>	<b>\$892,813.03</b>

Amt. of Trust Funds invested, \$15,135.51  
Amt. of Trust Funds uninvested, 144.69

**Total Trust Funds, \$15,280.20**

#### CORPORATE TRUSTS

Total amount (i. e. face value) of Trusts under deeds of trust or mortgages executed by Corporations to the Company as Trustee to secure issues of corporate bonds, including Equipment Trusts, \$35,000.00

State of Pennsylvania, County of Dauphin, ss:  
I, S. C. Stecher, Treasurer of the above named Company do solemnly swear that the above statement is true to the best of my knowledge and belief. S. C. STECHER,  
Treasurer

Subscribed and sworn to before me this 10th day of November, 1911.

E. M. HERSHEY, Notary Public  
My commission expires Feb. 6, 1915.

Correct—Attest:

M. S. HERSHEY,  
WM. H. LEBKICHER,  
JNO. B. CURRY, } Directors

Advertise in the Hershey Press