

# Around Campus

scholarships aren't the only way to pay for school.



**ATTENTION EVENING STUDENTS!**  
GREAT OPPORTUNITIES ARE AVAILABLE FOR PART-TIME EMPLOYMENT AT THE WILLOW GROVE FACILITY.

**AVAILABLE SHIFTS:**  
Midnight (approx start time 10:30PM)  
Preload (approx start time 3:45AM)

**PART-TIME PACKAGE HANDLERS**

**The UPS EARN & LEARN Program** Up to \$23,000\* in College Education Assistance

Consistent Work Schedules • \$8.50-\$9.50/Hour  
Weekly Paycheck • Excellent Benefits  
Weekends & Holidays Off • Paid Vacations

**WE ENCOURAGE INQUIRIES TO BE MADE IN PERSON:**

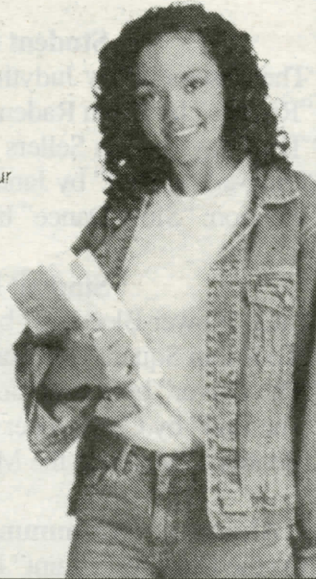
**WILLOW GROVE FACILITY**  
2 Electronics Drive • Willow Grove  
(Off Welsh Road)

Apply: M-Th 9 AM-2 PM & 4 PM-7 PM  
Tue & Thur 9PM-10:30PM or Fri 9 AM-NOON  
Take SEPTA 55 Route

**215-830-7942**

[www.upsjobs.com](http://www.upsjobs.com)

Equal Opportunity Employer  
\*Program Guidelines Apply.

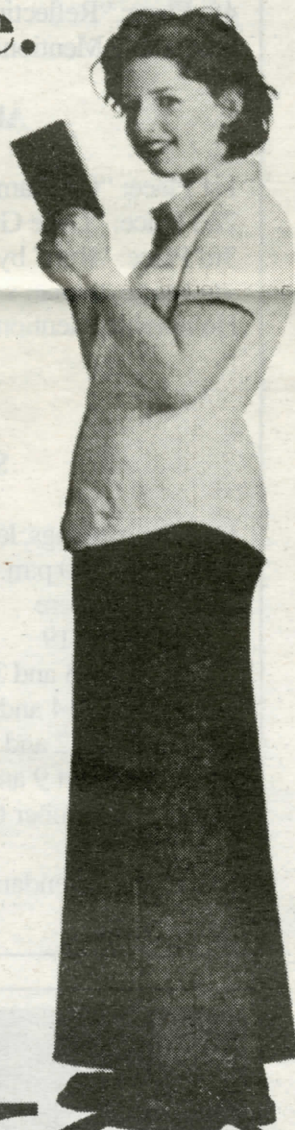


*Serene views around campus*



Photos by Alana J. Mauger

**Stay the course.  
Heck, stay  
the summer.  
Room and  
board are  
FREE.\***



No kidding, take 6 credits at West Chester University this summer and we'll give you a FREE room to stay in and 2 FREE meals a day. The faculty's great, the tuition affordable and with more than 300 courses to choose from, there's something for everyone. If you're considering transferring to WCU, there's no better way to give us a try.

*Registrar's Office:*  
**610-436-3541**

*Housing Office:*  
**610-436-3306/07**

[www.wcupa.edu](http://www.wcupa.edu)

## Information from Health Services About Student Health Insurance

Will you be in need of health insurance come Fall 2001? If so, mark your calendars to contact MCCC's College Nurse, **Grace Ann Spena, RN, MSN**, in late July 2001, to learn about what Student Health Plan options will be available for the coming academic year, **September 1, 2001 through August 31, 2002**. Grace can be reached at **215-641-6606** or at email address [gspena@mc3.edu](mailto:gspena@mc3.edu).

Remember, **academic success can be directly affected by one's state of health.** The cost of accessing health care today can be quite expensive, as can paying for individual health insurance coverage. With the **group coverage** available through the MCCC Student Health Plan options, premium rates are often significantly lower and more affordable.



*Expect Excellence*

**Summer Sessions**  
May 21 - June 23  
June 25 - July 28

**West Chester University**  
of PENNSYLVANIA