

MILLER LIBRARY, KEYSTONE COLLEGE



3 2351 00060527 8

NOKOMIAN
1941



NOKOMIAN

OF NINETEEN HUNDRED
AND FORTY ONE

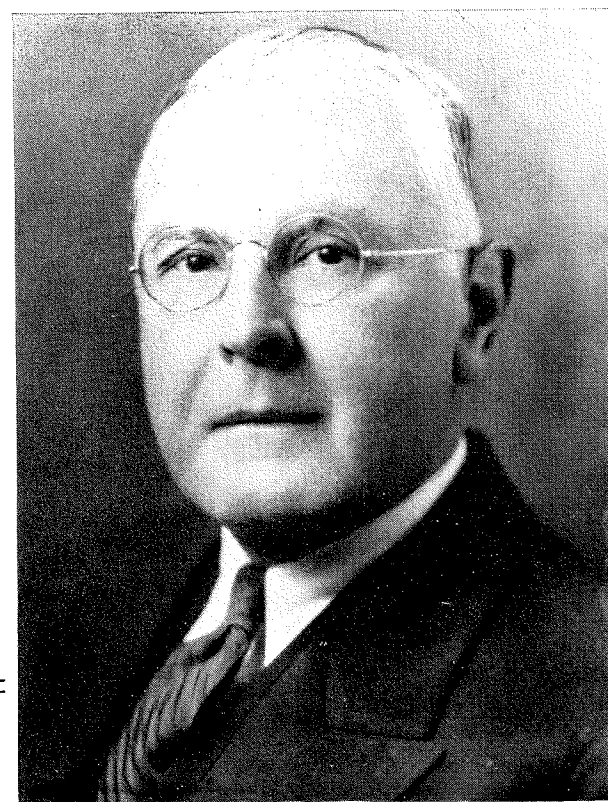


We Dedicate This Issue of the
NOKOMIAN to Mr. Charles H. Welles, Jr.

BECAUSE—Since the inception of the junior college, Mr. Welles, in a quiet, unobtrusive way has rendered yeoman service to the college as treasurer of the Board of Trustees.

BECAUSE—Mr. Welles is a living example of our ideal of a high quality citizen, a quiet scholar, and an unselfish gentleman.

BECAUSE—We appreciate his efforts in our behalf and we hope his interest in Keystone will never falter.



OUR BOOK OF MEMORIES

We have come to the end of a trail. We step out of the portals that "lead to an enchanted land..."

To those for whom this book symbolizes a goal accomplished, perhaps a sacrifice completed, a dream realized—our parents—we express our gratitude in this yearbook of the Class of 1941...

To the administration and faculty whose guidance has brought us to a new milestone on our journey we tender our sincere appreciation...

The experience of freshman days ended, and the journey to graduation completed, we have found as we leave the portals a time of retrospection in which troubles seem trivial; pleasures, very dear...

There is a lump in our throats. They tell us that the lump is but the natural result when one has drunk too deeply of memory...

As time steals away our years, we will want to treasure our memories. We will want to relive for a while those yesterdays which we realize will be ending all too quickly...

This is our book of memories...

FLORENCE L. GILLESPIE, *Editor*.
RUTH OLEVICH, BERNARD ENDELMAN, GEORGE CAMPBELL, *Assistant Editors*.
ALVIN WILENSKY, *Business Manager*.

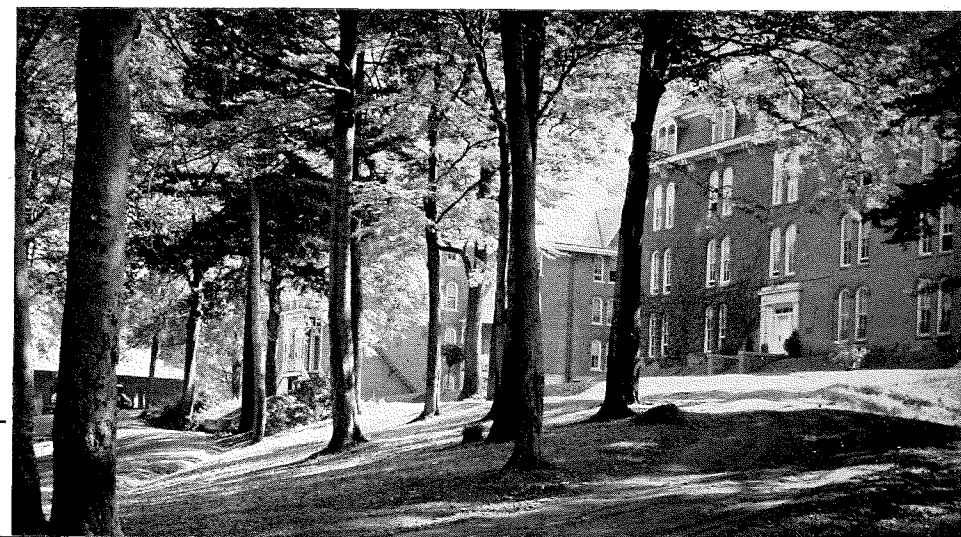


*Nokomis Creek Winds
Around the Back Campus*

*King Winter Reigns on
the Back Campus*

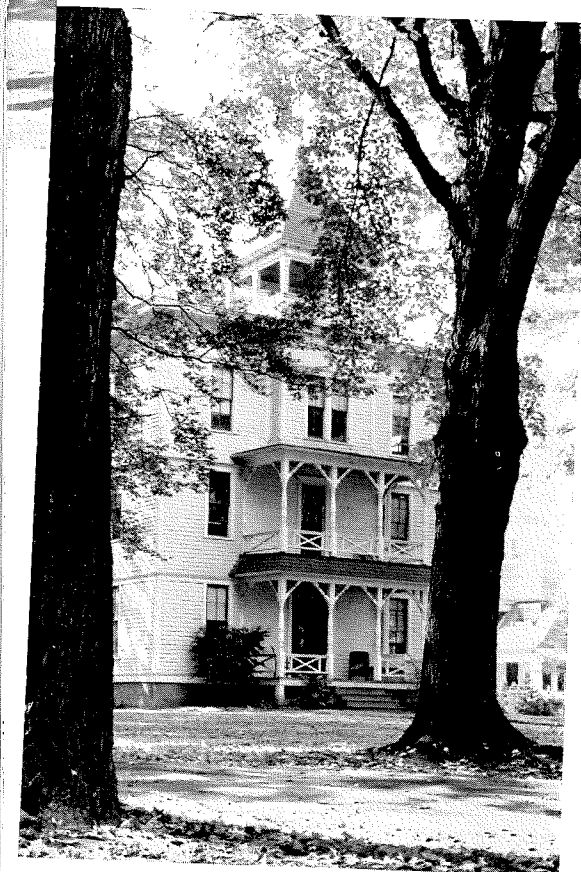


*"On a Hilltop Crowned
by Sunlight . . ."*

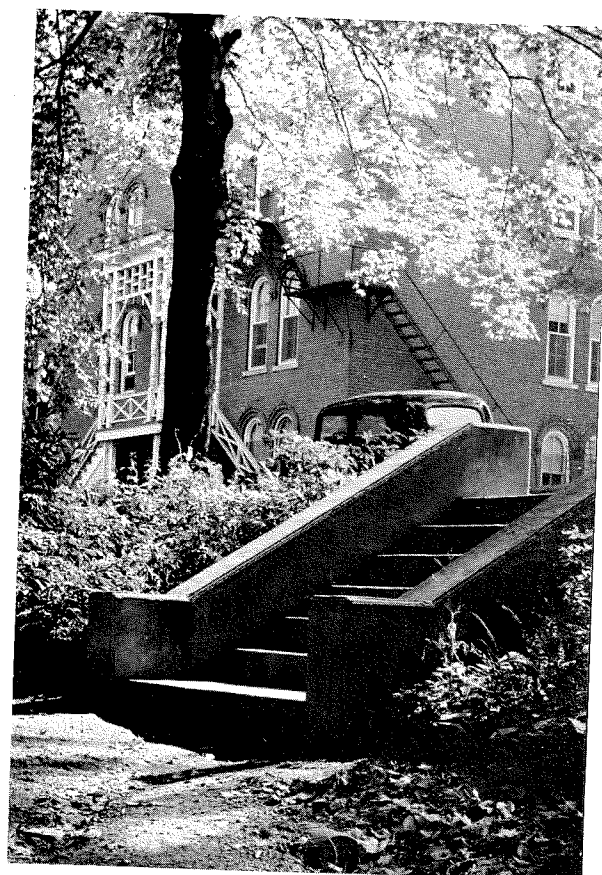




Sophomore Lane Entrance



The Cottage



Memorial Stairway



Executives in the Making . . .

Administration

We proffer great respect and praise to those by whom this college is administered ... We here commend our faculty ... They have opened up new vistas for us ... They have shown us the horizon is limitless ... Respected, admired, loved, not only as superiors, guides, teachers, but equally as friends ...



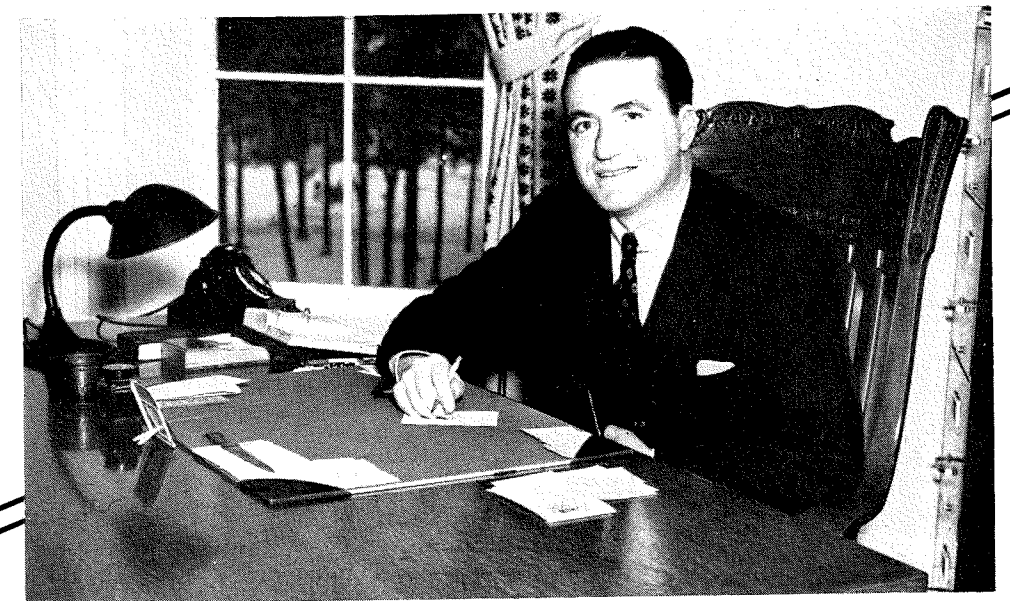
MOORE HALL

BOARD OF TRUSTEES

RALPH A. AMMERMAN	Scranton, Penn'a.
A. M. BINGHAM	Scranton, Penn'a.
JOHN H. BROOKS	Scranton, Penn'a.
DUNCAN T. CAMPBELL	Scranton, Penn'a.
DANIEL A. CAPWELL, '79, M. D.	Scranton, Penn'a.
HAROLD CONRAD	Scranton, Penn'a.
CADWALLADER EVANS	Waverly, Penn'a.
E. B. FARR	Tunkhannock, Penn'a.
REESE H. HARRIS	Scranton, Penn'a.
WALTER L. HILL	Scranton, Penn'a.
EDWIN W. KEMMERER, '95, PhD., LL.D.	
HON. D., D.Sc., D.C.S.	Princeton, N. J.
JAMES A. LINEN, JR.	Waverly, Penn'a.
RICHARD E. LITTLE, '16	Clarks Summit, Penn'a.
HARRY W. MUMFORD, '96	Clarks Summit, Penn'a.
URBANE A. NOBLE, M.D.	Scranton, Penn'a.
HENRY H. OTTO, SR.	Scranton, Penn'a.
FREDERICK J. PLATT	Scranton, Penn'a.
CARADOC REES	Nanticoke, Penn'a.
RALPH W. RYMER	Dunmore, Penn'a.
ELIAS W. THOMPSON	Facteryville, Penn'a.
JOHN S. TURN	Tunkhannock, Penn'a.
COL. L. H. WATRES	Scranton, Penn'a.
RALPH E. WEEKS	Scranton, Penn'a.
CHARLES H. WELLES, JR.	Scranton, Penn'a.
JOHN H. WILLIAMS	Scranton, Penn'a.

EDUCATIONAL ADVISORY COMMITTEE

- DR. BEN D. WOOD, Associate Professor of Collegiate Educational Research, Columbia University.
- DR. E. DUNCAN GRIZZELL, Professor of Education, University of Pennsylvania.
- DR. WRAY H. CONGDON, Dean of the University, Lehigh University.
- DR. H. W. ROBBINS, Chairman, English Group and Graduate Division, Bucknell University.
- DR. CARL E. MARQUARDT, College Examiner, Pennsylvania State College.



TO MEMBERS OF THE CLASS OF 1941

DURING this past year, I suppose the maps of the world and the governments of people have been more changed than during any other one year since the time of Napoleon. In this sheltered spot, it was just news in a paper, a voice over the radio, or a letter from far away.

The best wish I can make for the class of 1941 is that you may continue to be protected from the catastrophic forces which have made life unhappy for young men and young women in many other countries. Given an opportunity, I know you will succeed in your chosen fields. Given democracy, I know you will be good citizens.

My hope for you is that you will be given both opportunity and democracy. At Keystone, we shall always welcome your return, and we shall always follow your progress with interest and with affection.

BYRON S. HOLLINSHEAD

ADMINISTRATION

LUCILE M. SCHEUER, DEAN OF WOMEN

No situation ruffles the cool, smiling good-nature of Miss Scheuer. Capably and smoothly, she does well everything she undertakes: supervising the Masque and Harlequin, giving her classes a thorough grounding in the glories of English Literature, advising the Student Council, and guiding her charges with the "firm but gentle" hand. She is happy when her girls are happy. She finds genuine pleasure in arranging a calendar of social events, planning dances, teas, meetings, receptions, and leaves no detail untouched.

BLAKE TEWKSBURY, REGISTRAR

Coming to his office in February, Mr. Tewksbury has taken over the machinery of registration, evaluation of credentials and qualifications of entering students, recording, issuance, and transmission of grades, and the preparing and issuing of the final documents of graduation, as if he had been here for a number of years. Busy contacting prospective students, speaking to various organizations in the region, Mr. Tewksbury has become acquainted with most of the students here, who like to listen to his pleasant, booming voice.

FRED A. DENMON, CONTROLLER

Mr. Denmon—the man behind the scenes, who by his efficient administration of the financial machinery of Scranton-Keystone has gained a reputation as one of the leading junior college controllers in the country. Despite his tremendous burden as controller, Mr. Denmon finds time to greet the faculty and students in his quiet, sincere fashion, calling all by their first name. Students at Keystone are not just names in a ledger to him, but individuals.

DR. GENE A WALLAR, DEAN OF MEN

Dr. Wallar, a psychologist, is admirably fitted for his position of counselling students in the selection of courses, adjusting of first-year students to life here at Keystone, maintaining discipline, and in his capacity as a member of the administrative board. Although this has been his first year at Keystone, he has won his way into the hearts of students and faculty alike because of his quiet, friendly attitude of helpfulness and cooperation.



FACULTY



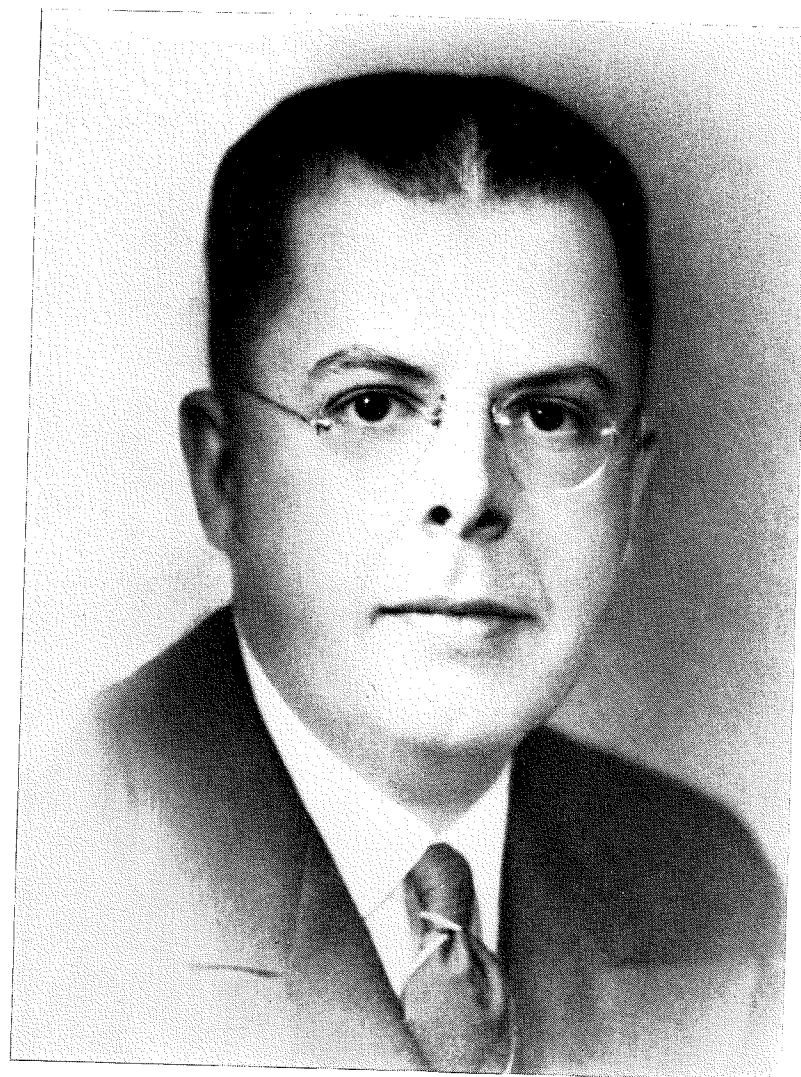
1st row, l. to r.: Miss Anabel Zimmerman, Dr. John Humes, Fred Denmon, Charles T. Oswald, Dr. F. B. Davies.

2nd row, l. to r.: Dr. Samuel Morris, Miss Lucile M. Scheuer, Peter P. Stapay, Byron S. Hollinshead, president; John A. Campbell.



1st row, l. to r.: George Azar, Jr., Doris Smith, Dr. Helen Garret, R. M. Lightfoot, Jr., Norton Beach.

2nd row, l. to r.: Samuel A. Lee, Dr. Gene A. Wallar, Dr. Joseph A. Strelzoff.



STERLING E. HESS

In Memoriam

A FAIR measure of the quality of Keystone is the men that it attracts. With the death on February 22 of Sterling E. Hess, beloved professor, linguist and philosopher, we lost a man who had the respect, the love and the admiration of every one of his pupils—a man of whom it can truly be said that he was the “perfect pattern” for all professors. The immense diversity of his interests and positions in the college have reached out and drawn every student to him for instruction, for advice, for guidance.

Because of an “understanding heart,” his judgments as acting dean and acting president, as dean and director of guidance, were wise and just.

He always gave of himself—the greatest gift that any man can give, and his influence will make itself felt in the lives of all those who knew and loved him.

All who studied under him were highly privileged—and those who had the good fortune to recognize the calibre of their teacher had the rare experience of feeling that they were close to the seats of the mighty.

Classes

Serenely we have climbed the stairway
and entered the portals to deal in strange
truths... We have entered the storehouse
and taken of the fruit... class discussions
...notebooks of lectures... friendly teach-
ers... friendships... We are united in
spirit...



CAPWELL HALL

CLASS OF 1941

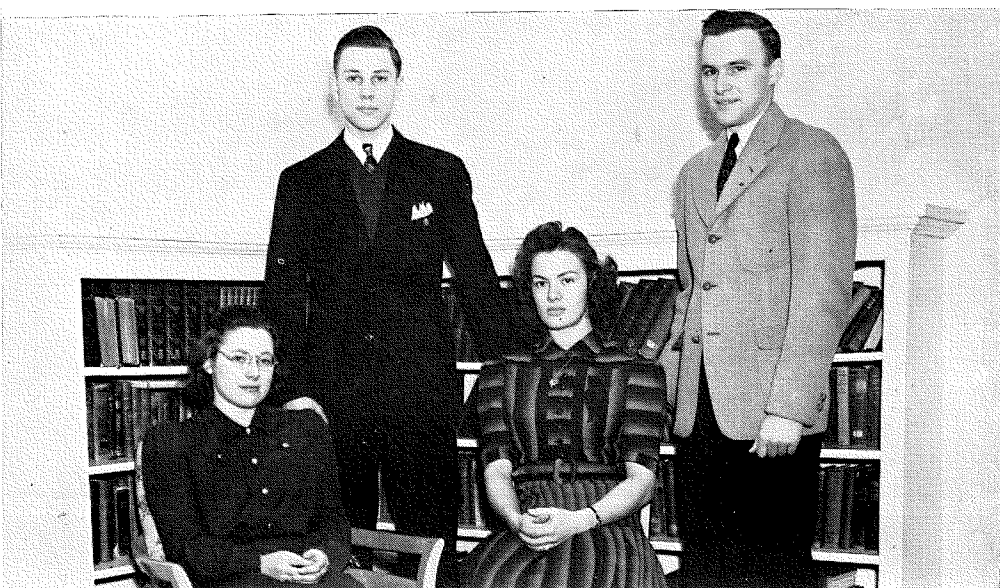
ON A MONDAY, September 21, 1939, a crew of frosh, unawed, unafraid, and seemingly unimpressed, (sorry we can't say the usual awed, afraid, impressed, for that was not the character of the Class of 1941), were presented to Keystone, to the sprawling, hilly campus, to Harris Hall, to Capwell Hall, to Moore Hall, to the gym, to the Cottage, to Sabiston Hall, to Laplume, to Factoryville, and to the Nokomis. Oh, yes, and we also met the Class of 1940—all the way, and we did all the walking!

We, the Class of 1941, were a delight to any upperclassman. Partly because of tradition, partly because of our inextinguishable spirit, elan, or what you will, we were hazed, and hazed in the best Keystone manner.

In our first action as a homogeneous unit we elected class officers, naming Robert Huber as president, Evelyn Sailer, vice-president; William Morgan, treasurer; and Lois Gardner, secretary.

Just as we began to become integrated to our surroundings, and to begin to really know the Class of 1940, Commencement Day, Tuesday, June 4, 1940 crept up on us, and we were left to uphold and cherish the unblemished escutcheon of Keystone, and so, as Sophomores, we came back in September with this weight on our shoulders.

The first thing we did was to institute a new set of Freshman rules, more lenient, more just, more considerate, and more humane to the rodents of the Class of 1942. In place of the Frosh-Soph



OFFICERS

JAMES S. SMITH
President

FLORENCE GILLESPIE
Vice-President

WALTER TENCH
Treasurer

MARIE FINNERTY
Secretary



CLASS OF 1941---Continued

football game there was a tug-of-war which we won, becoming the first class in the history of the college to win this competition both as freshmen and as sophomores.

We elected as our officers James S. Smith, president (the first time an Engineer had attained this position), Marie Finnerty, vice-president, Walter Tench treasurer (the first boarding student to gain office), and Florence L. Gillespie, secretary.

Then we plunged into this, our last year at Keystone with alacrity. We joined clubs, and had dances, we had weiner roasts and our Sadie Hawkins Day, we went to classes and cut classes, we had had our Cafe Society and our Lounge Lizards, we had our steadies and our break-ups, and above all, we had the Engineers and the Business Men.

We have had our students, our athletes, our joiners, our journalists, our speakers and debaters, our dramatists, our singers, our terpsichoreans, our lovers, our ioisterers, and, glory be, our punsters!

We have been, we believe, a typical Keystone class. We are conservative, but take our politics with a grain of salt. We like saddle shoes and comfortable attire. Dancing is our favorite recreation. We smoke Luckies as our favorite brand, and our coeds like to see the men smoke pipes. We complain about the bus schedule, the Cattle Wagon, the dull week-ends, the snap courses that we found out weren't, and love every bit of it.

And now we are passing on, but we won't miss Keystone—for we are taking it with us, as all our predecessors have before us. We are taking Keystone with us in our hearts, and carrying nevertheless a lump in our collective throat, because we fear that maybe the memory will not compensate for our physical departure. But we shall come back as our predecessors have before us, and every day will be a Homecoming Day.

So Keystone and Class of 1942, we say—
Aufwiederschen, and not good-bye.

HAPPY-GO-LUCKY "Bottles" . . .
 "Hail to thee blithe spirit" . . .
 hockey star . . . knitter extreme . . . likes
 to snooze . . . The Cottage has "Steppy"
 to thank for a "measly" week's vaca-
 tion . . . Good-natured as they come . . .
 Tops with all.

KNOWS and sings (to the delight of
 her friends) all the latest song hits
 . . . Dancer—"jitterbug" and "rhumba"
 . . . Director of make-up for Masque and
 Harlequin . . . Almost always seen with
 Matthews and Leath . . . Good fun.

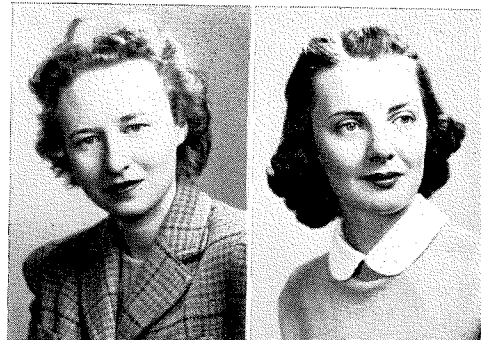
"BEE." "Beetle." Sparkling person-
 ality . . . Stimulating . . . Screw-
 ball deluxe . . . Good student . . . Very
 much interested in psychology (and
 trys to work it when she can) . . .
 Tennis woman . . . "Stands tall, thinks
 tall, lives tall."

BLONDE Flash . . . "Brun" . . . Witty
 as they come . . . Good sport . . . Can
 really take it . . . Good company . . .
 Interested in baseball—or is it "Casey
 at the Bat?"

HELEN M. BARTELS

New Rochelle, N. Y.

Orange and Blue, 1-2;
 Reporter, 2; Secretarial
 Club, 1-2; K. W. O., 1-2; I.
 R. C., 1-2; Keystone Staff,
 1; Nokomian Staff, 2;
 Hockey, 1-2; Intramural
 Sports, 1-2; KeyTonians, 2.
 Secretary, 2.



BARBARA L. BETELAK

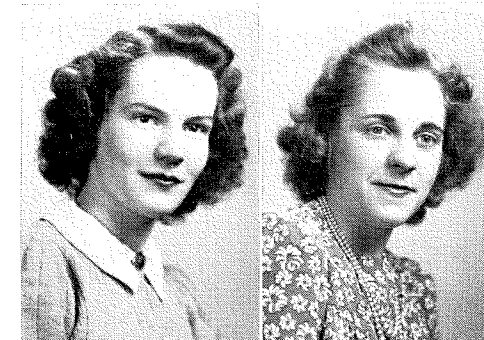
Scranton, Pa.

Secretarial Club, 1-2; K.
 W. O., 1-2; Hockey, 1;
 Intramural Sports, 1-2;
 Masque and Harlequin, 1-2.

BARBARA BREWSTER

Scranton, Pa.

Orange and Blue, 2; K.
 W. O., 2; French Club, 2;
 Masque and Harlequin, 2;
 Basketball, 2; Honorary
 Society, 2.



MARION L. BRUNING

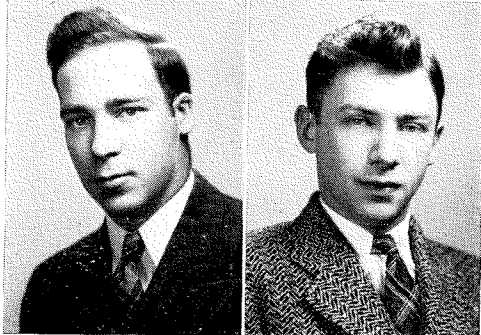
Honesdale, Pa.

Secretarial Club, 1-2; K.
 W. O., 1-2; Glee Club, 1-2;
 Home Economics Society, 2;
 Riding Club, 2; Concert
 Association, 1.

BRUCE R. BLOXHAM

Forest City, Pa.

Moore Hall Student Coun-
 cil, 2; Varsity "K" Club,
 1-2; Treasurer, 1, Presi-
 dent, 2; Wrestling, 1-2;
 Intramural Sports, 1-2;
 Football, 1-2.



EDWARD JOHN BRANDT

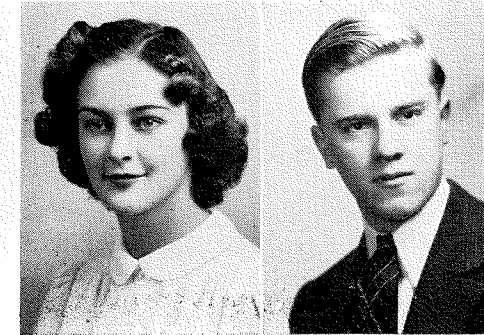
Scranton, Pa.

Glee Club, 2; Kappa
 Sigma Epsilon, 1-2; Masque
 and Harlequin, 1; Cheer-
 leader, 2; KeyTonians, 2.

BARBARA S. BURNS

Scranton, Pa.

Student Council 1-2; K.
 W. O., 1-2; Vice-President,
 1; Glee Club, 2; I. R. C., 2;
 Nokomian Staff, 2; French
 Club, 1-2; Hockey, 1, Assist-
 ant Manager, 1; Masque and
 Harlequin, 1-2; Honorary
 Society, 2.



ANTHONY BUTCHKO

Scranton, Pa.

Camera Club, 2; Treas-
 urer, 2; Kappa Sigma Chi,
 1-2; Intramural Sports, 1-2;
 Aviation Club, 1-2.

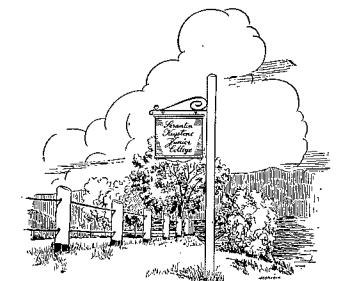
HUNG up record of 15 straight wins
 in wrestling—he can really pin
 'em . . . Sleepy "Bruiser" . . . looks at
 home in a sweat shirt . . . Charter Mem-
 ber of the Lounge Society.

"DEACON." "Reverend." His fare-
 well speech to Ben. J. Trapani is
 something to be remembered . . . In his
 deep voice "Joe" has led the "spir-
 ituals" in Capwell Lounge and during
 the journeys via Martz . . . A singing
 voice of tone, frequency, and volume
 . . . Nonchalance personified.

"BETTY PETTY." Super in every-
 thing she does from Dramatics to
 languages . . . Flashing and clever wit
 . . . Scholar . . . Went to Florida and
 had a wonderful time at the beach . . .
 Noted for her famous whistle and
 screams . . . A conscientious worrier,
 Bobbie always manages to come out on
 top.

CHARTER member of the Mad
 Doctor's Society (Dr. Von Butchko,
 C. O. D.) . . . Member of clean-living
 Science Club—pennant winning five . . .
 C. A. A. man.

The
NOKOMIAN

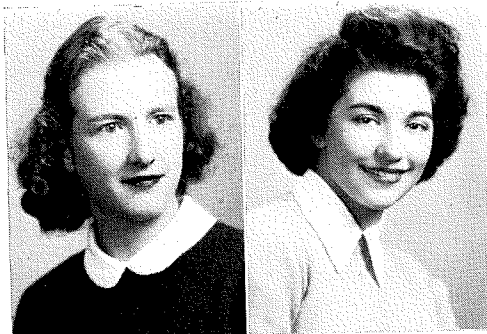


CAPABLE Home Ec . . . Infectious smile and laugh . . . Blonde . . . "Ready in heart and ready in hand" . . . Knitter of "Bundles for Britain" . . . Friendly.

EFFICIENT, capable office secretary—but not for long . . . Other things in the offing, ("dental trouble??") . . . Can run an office like a clock . . . Enjoys a snooze on the Martz . . . Very well-liked.

MARION F. CAPWELL
Factoryville, Pa.

Orange and Blue, 2; Camera Club, 2; Vice-President, 2; K. W. O., 1-2; Kappa Sigma Chi, 2; Home Economics Society, 1-2; Secretary-Treasurer, 1-2; Hockey, 2; Cheerleader, 1; Intramural Sports, 1.

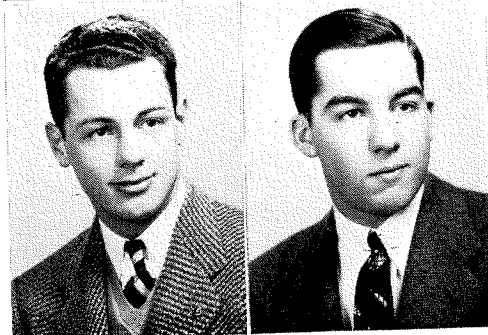


MARIE T. CETTA
Scranton, Pa.

Secretarial Club, 1-2; K. W. O., 1-2; Debating, 1; Tribunal, 2; President and Secretary, 2; **Keystonian** Staff, 1-2; Masque and Harlequin, 1; Honorary Society, 2; **Nokomian** Staff, 2.

ROBERT E. COFFMAN
Scranton, Pa.

Keys, 2; Kappa Sigma Epsilon, 1-2, Secretary, 2; Intramural Sports, 1-2; Capwell Stewards, 1-2.



NELSON W. CHIVERS
Peckville, Pa.

Varsity "K" Club, 1-2; Kappa Sigma Epsilon, 1-2; Vice-President, 1; Tribunal, 2; Intramural Sports, 1-2; Football, 1.

"NELS." Tall, dark and very handsome Engineer . . . Good football player . . . Smart politician . . . Never seen without Gerhardt . . . Toothpaste ad . . . Excellent dancer—when Chiv gets shuffling on the floor the "maidens languish in despair."

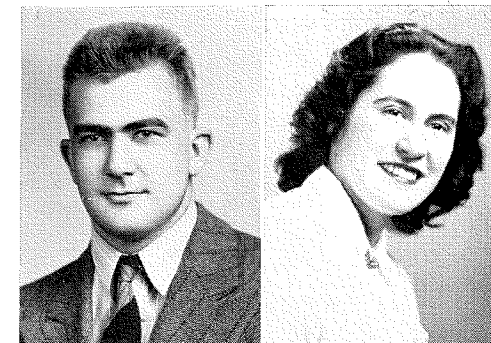
WACKY Engineer, but wacky . . . Seen always with Brandt and Smith . . . Not only friendly with Engineers . . . Apparently indifferent, but coming thru with good grades for a fellow who is a social butterfly . . . Loud and noisy in the Engineer's style.

"THE BULL." Keeps in shape by running "only 60-70 laps a day" . . . Quiet, unassuming, really studies . . . Owl . . . Been stepping out this past year . . . He's a three letter man . . . Athlete of high calibre . . . Has a love of sports . . . There are lots of rooters for "Bull."

"DAISY MAE" . . . Friendly as the day is long . . . Excellent president of the Secretarial Club . . . Will make someone a pretty and perfect secretary . . . Vivacious . . . O. K. Plus . . . A bundle of pep and personality.

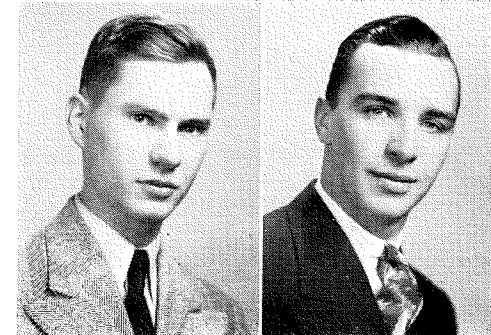
WARREN S. CONRAD
South Gibson, Pa.

Varsity "K" Club, 1-2; Wrestling, 1-2; Intramural Sports, 1-2; Football, 1-2; Baseball, 1-2.



EDWIN E. DAVENPORT
Nicholson, Pa.

Kappa Sigma Epsilon, 1-2.



J. MARIE COOLBAUGH
Clarks Summit, Pa.

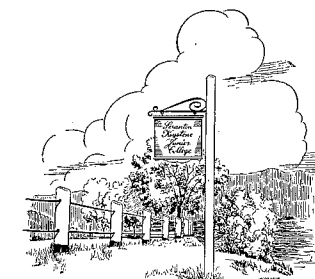
Secretarial Club, 1-2; Vice-President, 1, President, 2; Radio Club, 2; K. W. O., 1-2; Glee Club, 1-2; Librarian, 1; Kappa Sigma Chi, 2; I. R. C., 2; **Keystonian** Staff, 2, Editorial Board, 2; **Nokomian** Staff, 2; French Club, 1; Masque and Harlequin, 1; Honorary Society, 2; Concert Association, 1.

MONTGOMERY M. DOUD
Carbondale, Pa.

Kappa Sigma Chi, 2; French Club, 1; Intramural Sports, 1-2; Basketball, 1.

NICKNAMED "Sonny Boy" by Doc Strelzoff . . . Rises out of his math books and comes out of the chem lab long enough to snap pictures . . . An intellectual, capable of concentration during a cat and dog fight . . . Dav is one of the gang.

"DUKE" "Montmorency" Pinochle player morning, noon and night . . . Quiet . . . Cattle Wagon kid . . . looks, sad, but he never is . . . Good fellow.



"COBINA." "Brenda." Great potentialities . . . Charter Member of Cafe Society . . . Bernie makes his mark as heckler and wit . . . His puns are both the delight and despair of his teachers . . . Par-excellent journalist.

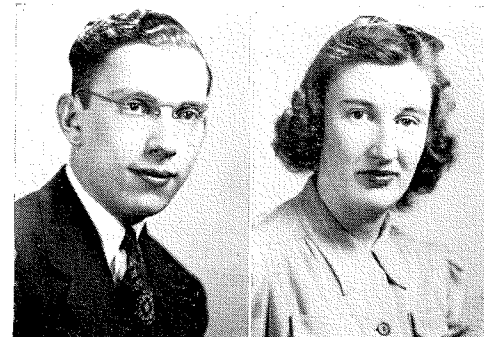
DASHING Dottie in her blue sedan and red jockey cap . . . Incomparable for her willingness to help anyone . . . Possessor of unpredictable remarks . . . One of those Med. Sees . . . Spends her time chasing blood-cells and slide-gazing . . . She's really swell.

"MICKY FINN." Dark, vivacious Ronnie . . . An industrious Home Ec . . . Cottager . . . Plays hockey, basketball and tennis . . . As fine a girl ever

ENERGETIC prexy of Sigma Mu Alpha . . . Instigator of fun . . . Noted for her peppy expressions . . . Always busy and efficient . . . May Queen's Court cutie . . . Laughs readily . . . Types faster than you can say S-m-i-t-h.

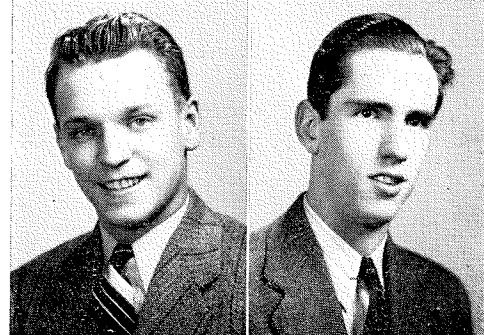
BERNARD ENDELMAN
Scranton, Pa.

Keys, 2; Kappa Beta Sigma, 2; Debating, 1; Kappa Sigma Chi, 1-2; Librarian, 2; I. R. C., 1-2; **Keystonian** Staff 1-2, Co-editor, 2; **Nokomian** Staff, 1-2, Assistant Editor, 2; French Club, 1-2; Wrestling Manager, 2; Masque and Harlequin, 1-2.



WILLIAM FAHRINGER
Nicholson, Pa.

Kappa Beta Sigma, 1-2; Intramural Sports, 1-2; Basketball, 1-2.



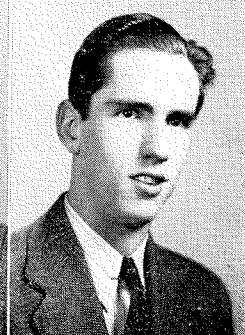
DOROTHY C. EVANS
Jermyn, Pa.

Sigma Mu Alpha, 1-2; Secretarial Club, 1-2; K. W. O., 1-2



ROBERT F. FELDMAN
Clarks Summit, Pa.

Kappa Sigma Chi, 1; Kappa Sigma Epsilon, 1-2; Intramural Sports, 1; Basketball, 2.



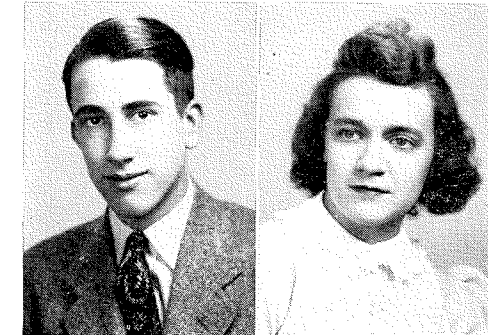
F. ROMAYNE FINN
Clifford, Pa.

Orange and Blue, 1-2; K. W. O., 1-2; Glee Club, 1; Home Economics Society, 1-2; Hockey, 1-2; Basketball, 1-2; Concert Association, 1.



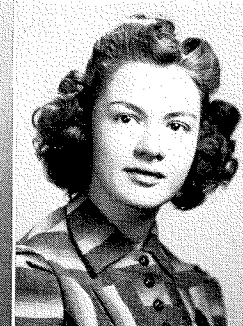
CLARENCE J. FITZE
Tunkhannock, Pa.

Keys, 2; Varsity "K" Club, 1-2, Secretary, 2; Kappa Beta Sigma, 1-2; Vice-President, 2; Tribunal, 2; Intramural Sports, 1-2; Masque and Harlequin, 1-2; Basketball, 1, Manager, 1; Tennis, 1-2.



MARIE A. FINNERTY
Taylor, Pa.

Sigma Mu Alpha, 1-2; President, 2; Orange and Blue, 2; Secretarial Club, 1-2; K. W. O., 1-2; Kappa Sigma Chi, 1; Tribunal, 2; Hockey, 2; Intramural Sports, 1-2; Basketball, 1; Sophomore. Vice-President; Riding Club, 1-2.



BETTY JANE C. FLOYD
Scranton, Pa.

Secretarial Club, 1-2; K. W. O., 1-2; Debating 1; **Keystonian** Staff, 1-2; **Nokomian** Staff, 2; Intramural Sports, 1; Masque and Harlequin, 1-2.

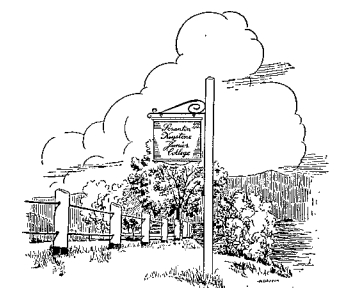


"WILD WILL." Friendly, unassuming, even tho he's five feet and some inches of swell basketball player . . . Always ready with a Fahringer Chevrolet.

"ALL North Chinchilla." Laconic, lean, lanky, long Engineer . . . Heckler deluxe . . . Czar of the cafe's Pinochle Players . . . Bob has a sensahuma he attempts to hide . . . he never succeeds in doing it . . . If you hear him, you'll know he's arguing with Supron.

"TUNKHANNOCK Tycoon" from Boaham and Fitze, Inc. (Commercial plug) . . . Can be found in library or Prof. Beach's room doing accounting . . . Popular as lunch hour . . . Tennis man . . . They don't make 'em any better than "Klee"

"DYNAMITE." "Short-Stuff." Small in stature, but has no difficulty in making herself heard . . . Shortest co-ed on campus . . . Friendly . . . Sincere . . . Lots and lots of friends



"LOEY." Good-natured . . . "She doeth little kindnesses" . . . Wise and thoughtful . . . Thorough and capable . . . Seen always with Ev Sailer . . . Queen of Factoryville . . . Popular with girl and boy students alike.

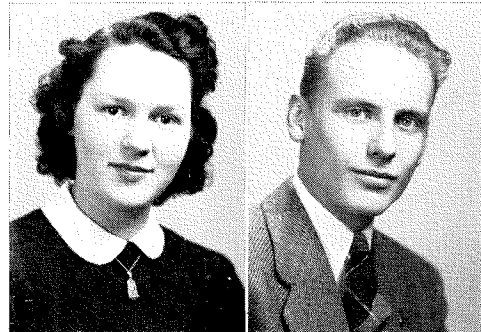
THE Will Rogers of the Cattle Wagon . . . Tall, blonde, handsome, laconic . . . "Knobby" and "Nels" are as inseparable as black and white . . . Politician . . . Witty Engineer . . . Cassanova of the Valley . . . Pinochle player of Cafe Society.

LOIS M. GARDNER
Factoryville, Pa.

Orange and Blue, 1-2; Vice-President 1; President, 2; K. W. O., 1-2, Secretary, 2; Glee Club, 1-2, Secretary, 2; Home Economics Society, 1-2, President, 2; Hockey, 2; Intramural Sports, 1-2; Masque and Harlequin, 1-2; Basketball, 1-2, Co-captain, 2; KeyTonians, 2; Freshman, Secretary; Concert Association, 1.

PETER J. GHIRELLI
Scranton, Pa.

Varsity "K" Club, 2; Kappa Sigma Epsilon, 1-2, Vice-President, 2; Tribunal, 2; Intramural Sports, 1-2; Masque and Harlequin, 1-2; Capwell Stewards, 1-2; Football, 1-2, Manager, 1-2.

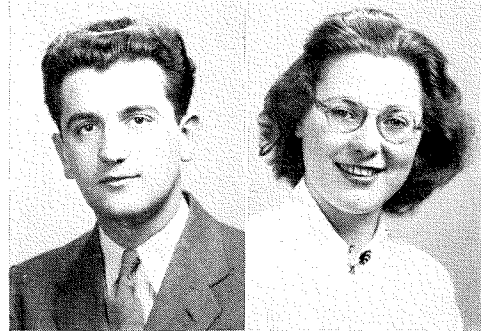


CARL F. GERHARDT
Peckville, Pa.

Kappa Sigma Epsilon, 1-2, Treasurer, 2; Intramural Sports, 1-2; Aviation Club, 2.

FLORENCE L. GILLESPIE
Dunmore, Pa.

Student Council, 1-2; Radio Club, 1-2, Secretary, 1, Vice-President 2; K. W. O., 1-2; President, 2; Debating, 1; Kappa Sigma Chi, 1-2; I. R. C., 1-2, Secretary, 1, Vice-President, 2; **Keystonian**, 1-2, Editorial Board, 2; **Nokomian**, 1-2, Editor, 2; Intramural Sports, 1-2; Masque and Harlequin, 1-2; Sophomore, Secretary; Honorary Society, 2.



"GINELLI." "Garibaldi." Not only the noisiest, but also the friendliest, most enthusiastic and most energetic on campus . . . Frat house man . . . Good fun . . . Big-hearted . . . Drawing lab assistant . . . Lover of sports . . . An Engineer all the way.

INTERESTED in everything—birds to journalism . . . Energetic . . . "Flo" . . . "Chips" . . . Tennis fan . . . Reliable . . . Always swishing around . . . Collection of pointless jokes . . . Loves argument, laughter and jest . . .

"HOT DOG." Perfect model for clothes . . . Quiet and shy but nice to know . . . Small in stature but obvious in personality . . . They don't make them any nicer.

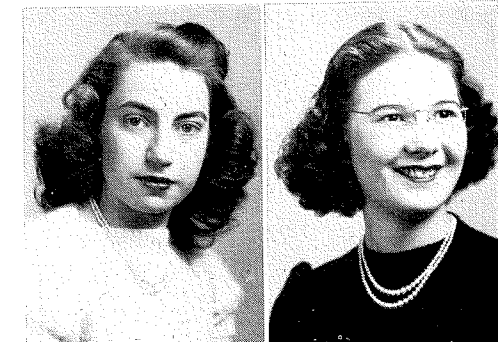
"B. J." Knitter of ability . . . Potato chips her mainstay in food . . . Handles a car expertly . . . Sings with joy . . . Secretary . . . Ready . . . Willing . . . Able.

FRIEDA A. GUTHEINZ
Scranton, Pa.

Secretarial Club, 1-2; K. W. O., 1-2; Glee Club, 1; Hockey, 1-2; Intramural Sports, 1-2; Concert Association, 1.

EUGENE J. HAWLEY
Scranton, Pa.

Radio Club, 2; Kappa Sigma Chi, 2; Treasurer, 2; Kappa Sigma Epsilon, 1-2; **Keystonian** Staff, 2; Wrestling, 2; Intramural Sports, 1-2; **Nokomian** Staff, 2.

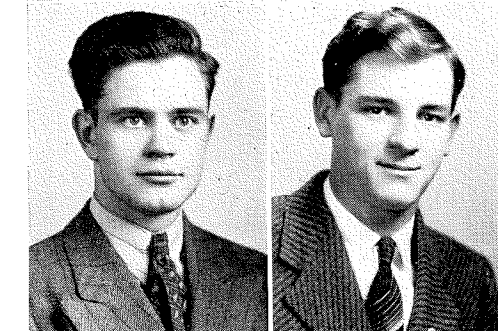


BETTY JEAN HARRIS
Scranton, Pa.

Secretarial Club, 1-2; K. W. O., 1-2; Glee Club, 1; **Nokomian** Staff, 2; Intramural Sports, 1-2; Masque and Harlequin, 1; Concert Association, 1.

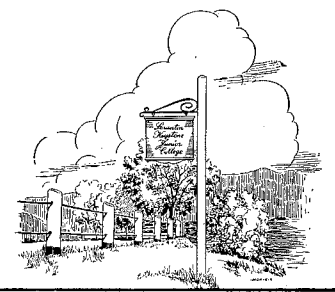
RICHARD HERRON
Clarks Summit, Pa.

Kappa Sigma Chi, 1-2; Wrestling, 1; Intramural Sports, 1-2; Baseball, 2; Basketball, 2, Manager 2.



"THE Little Abner of Keystone" . . . One of the dorm boys . . . Happy-go-Hawley . . . Not so quiet as he may seem . . . Foghorn voice . . . Wrestler of note . . . Would give you the shirt off his back . . . Big, hearty, happy Gene.

NEVER idle a moment . . . Thoughtful of others . . . Dick is the best assistant Sam ever had . . . Farmer . . . Capable . . . Reliable . . . Been getting around quite a bit lately.



"D IMPLE in chin means devil within"
 ...Peg's our highest scorer in basketball ... Hard to know but well worth knowing ... In her serious moments a Med Sec ... Fun ... Big doings at the Cottage keep us from seeing her often.

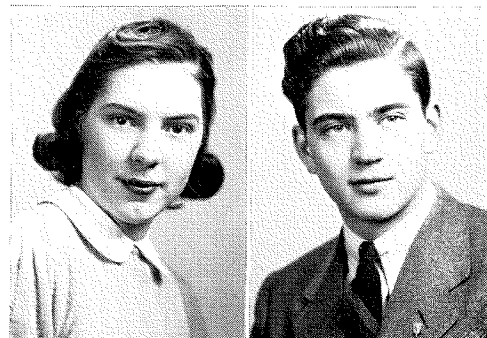
PADEREWSKI at the piano ... Quiet Engineer (we mean it) ... Brain truster ... Sincere ... Good sense ... "Few things are impossible to diligence and skill" ... Reserved, humorous, an excellent student ... Bob is good-looking, popular, one of the boys.

SLEEPY-EYED, long, lumbering, genial Hub ... Brain truster ... natural leader ... Always pulls a faux pas ... Witty ... Bob and his pipe and "swastika" saddle shoes ... Takes a good ribbing ... Laughs like a frustrated chicken ... Popular ... Legions and legions of friends.

"WALT." "RED." Basketball man ... Always getting into trouble and out of it ... Right good fun ... Right good fellow.

MARGARET L. HINKLEY
 Hallstead, Pa.

Orange and Blue, 1-2; Secretarial Club, 1-2; K. W. O., 1-2; Intramural Sports, 1-2; Basketball, 1-2.



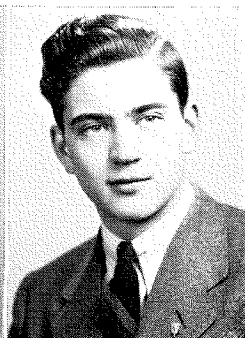
VERA G. HOFFMAN
 Scranton, Pa.

Kappa Sigma Chi, 1-2; Nokomian Staff, 2; Home Economics Society, 1-2; Masque and Harlequin, 1-2; Secretary-Treasurer, 2; Concert Association, 1.



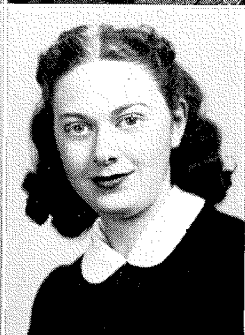
ROBERT E. HOFFMAN
 Clarks Summit, Pa.

Keys, 2; Varsity "K" Club, 1-2; Kappa Sigma Epsilon, 1-2; Intramural Sports, 1-2; Capwell Stewards, 2; Football, 1-2.



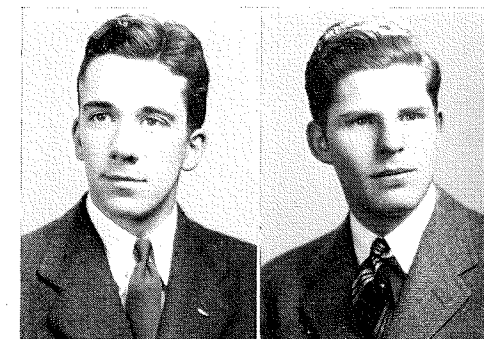
SYLVIA HORVITCH
 Scranton, Pa.

K. W. O., 1-2; Kappa Sigma Chi, 1-2; Home Economics Society, 1-2; Hockey, 2; Intramural Sports, 1; Masque and Harlequin, 1-2; Riding Club, 1-2; Keystonean Staff, 2.



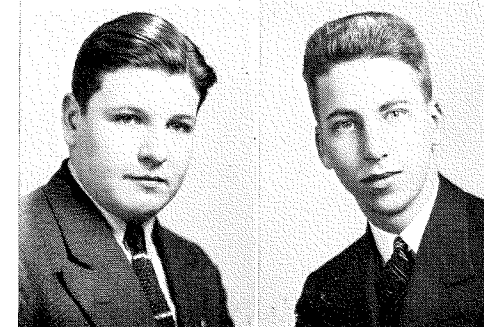
ROBERT L. HUBER, JR.
 Scranton, Pa.

Student Council, 2; President, 2; Keys, 2; Kappa Beta Sigma, 1-2; Glee Club, 1; I. R. C., 1-2, President, 2; Keystonean Staff, 1-2; Sports Editor, 2; Nokomian Staff, 1; Intramural Sports, 1-2; Masque and Harlequin, 1-2, Vice-President, 1; Aviation Club, 2; Freshman, President; Tennis, 1-2; Honorary Society, 2; Concert Association, 1.



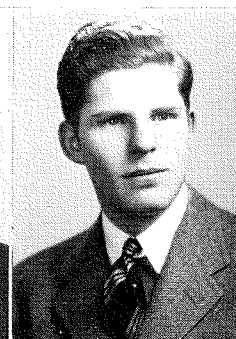
J. EDWIN KAREHA
 Peckville, Pa.

Kappa Sigma Chi, 1-2; Nokomian Staff, 2; Intramural Sports, 1-2. Intramural Sports Director, 2; Tribunal, 2.



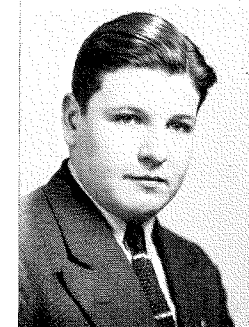
WALTON L. JONES
 Norwich, N. Y.

Varsity "K" Club, 1-2; Camera Club, 1; Kappa Sigma Chi, 1; Keystonean Staff, 2; Nokomian Staff, 2; intramural Sports, 1-2; Basketball, 1-2; Riding Club, 1.



I. JOHN KLEIN
 Scranton, Pa.

Varsity "K" Club, 2; Kappa Sigma Chi, 1-2, Treasurer, 1; Nokomian Staff, 1-2; Intramural Sports, 1-2; Football, 2; Basketball, 1-2; Tennis, 2.

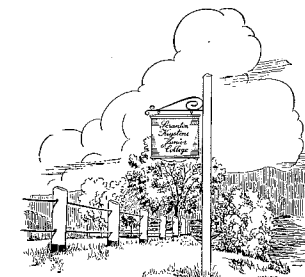


"THOSE things that most make women beauteous, serenity, wonder, gentleness" ... Noted for her baby talk ... Home Ec ... Combination of giddiness and sensibleness ... Pretty cute ... Cuts a swath.

"FLAMING MAMIE" ... "Rose of Providence Square" ... Looks good in riding habit ... Beautiful red hair ... Home Ec. whiz ... Just naturally nice.

"CHI CHI." "Judge Keneshaw Mountain." "Marrin' Sam." Czar of Intramural activities ... Cheerful ... One of the wackier Engineers ... Intelligent, even tho he doesn't want you to think so.

"LONG JOHN." "Lonesome." King of the dirt track ... Test pilot (of cars) ... Cafe Society ... Intelligent, but hates to think so ... Crazy laugh ... You see that "Dapper '37 Green Ford Convertible" everywhere.



MUSICIAN supreme . . . Chapel accompanist . . . One of the reasons why the Glee Club was so successful . . . Very reserved . . . His quiet manner belies his fiery locks . . . Knows how to get around in any language.

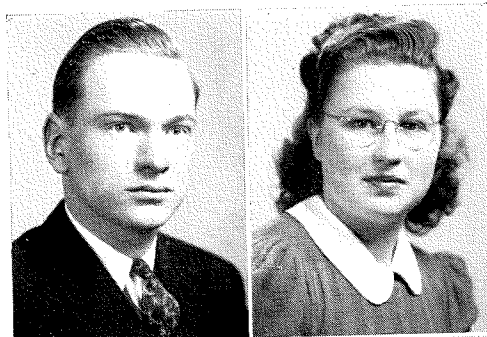
VICKY'S one of those people who sets her mind to do a thing and gets it done . . . Determined . . . Hard-worker . . . Quiet, but can be lots of fun . . . Lovely rosy cheeks . . . Glee Clubber . . . Happy chuckle.

TALKS a good ride on the Martz—or anywhere . . . Interesting conversationalist . . . Enthusiastic airman . . . Of the Engineer contingent . . . Would argue just for the stimulation and fun of it.

COTTAGE KID . . . Quiet . . . Shy . . . Friend indeed . . . Winning smile . . . Of the Secretaries . . . What eyes! . . . Short—dark—mysterious: that's Jane for you . . . You can't help liking her.

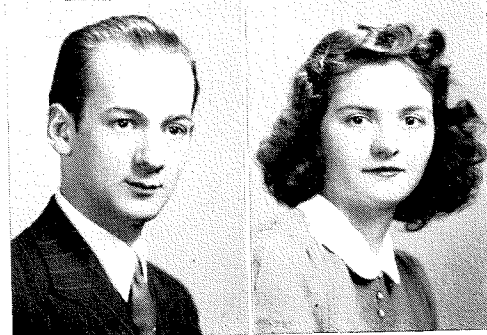
MYRON L. KOCHER
Scranton, Pa.

Glee Club, 1-2, Accompanist, 1-2; French Club, 1-2, President, 1-2; Concert Association, 1.



PARKS LANDIS
Scranton, Pa.

Radio Club, 2; Kappa Sigma Chi, 1-2; Kappa Sigma Epsilon, 1-2; Honorary Society, 2.



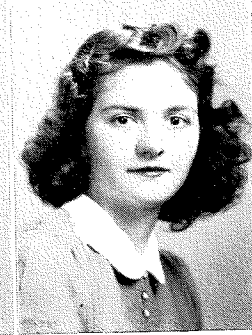
VICTORIA E. KOSYDAR
Dalton, Pa.

Sigma Mu Alpha, 1-2; Secretarial Club, 1-2; K. W. O., 1-2; Glee Club, 1-2; Kappa Sigma Chi, 1-2; Masque and Harlequin, 1; Concert Association, 1.



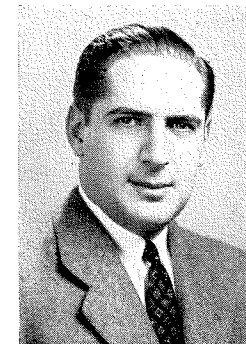
GWENDOLYN LEATH
Scranton, Pa.

Secretarial Club, 1-2; K. W. O., 1-2; Intramural Sports, 1-2; Masque and Harlequin, 1.



JACK LIPMAN
Scranton, Pa.

Kappa Sigma Chi, 1-2; Kappa Sigma Epsilon, 1-2; Intramural Sports, 1; Aviation Club, 1-2, Vice-President, 1-2.



JEAN M. MAGOR
Dunmore, Pa.

Sigma Mu Alpha, 1-2; Secretarial Club, 1-2; K. W. O., 1-2; Glee Club, 1-2; Kappa Sigma Chi, 1-2; Key-sonian Staff, 2; Nokomian Staff, 2; Intramural Sports, 1-2; Masque and Harlequin, 1-2; Concert Association, 1.



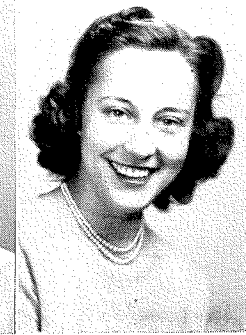
JANE E. LLEWELLYN
Avoca, Pa.

Secretarial Club, 1-2; K. W. O., 1-2; Glee Club, 1-2; Riding Club, 2; Concert Association, 1.



RITA A. MAHOLCHIC
Childs, Pa.

Orange and Blue, 2; Secretarial Club, 1-2, Secretary, 2; K. W. O., 1-2; Nokomian Staff, 2; French Club, 1; Hockey, 2; Masque and Harlequin, 1; Honorary Society, 2.

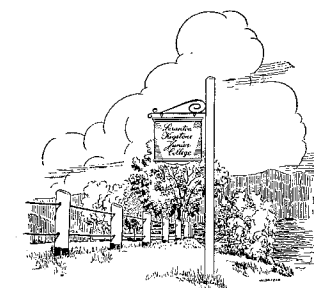


LIKES a good argument . . . Whimsical . . . Serious . . . Good-natured . . . Moody . . . Parks is an A student but one would never know . . . Friendly . . . Interesting . . . Studious.

"GIGGLES." Gwen is always losing something . . . Good-natured . . . One of the "Secretarial Procedures" people . . . Loves to pull a joke on someone . . . Tall . . . Dark . . . Beautiful features.

JEAN is a super-conscientious girl who is known for always being prepared . . . Very thoughtful . . . Sweet blonde . . . Wears a charm bracelet some one gave her for Christmas . . . Ability to choose colors . . . Industrious.

"IT IS a friendly heart that has plenty of friends"—and Rita has scads . . . Versatile . . . One of the long line of Maholchics at Keystone . . . "Merry sunshine" spreader . . . Student . . . Prize wack . . . Lots of fun . . . Finest of girls.



INSEPARABLE from Leath and Bete-lak . . . Exact in every detail . . . Witty Secretary . . . Twinkling eyes . . . Once you know Dotty, she is neither quiet nor shy.

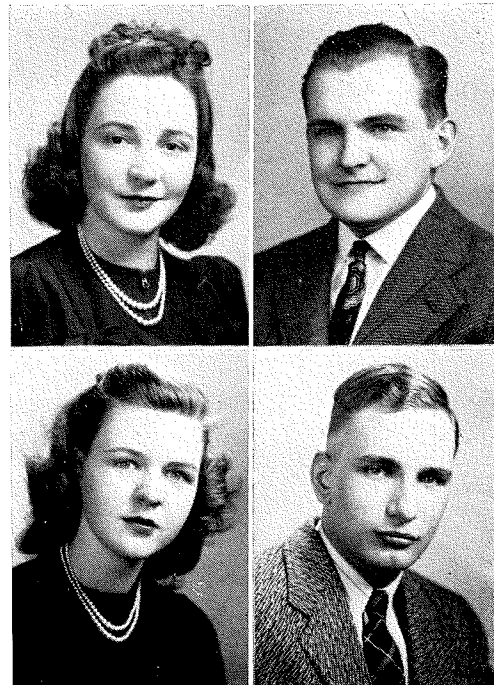
JOE is a member of the Club No. 19 . . . Owl . . . Zipper . . . "Gets around" and knows his Pittston . . . Intelligent . . . A boy who is going places . . . Good old Irish wit.

DOROTHY E. MATTHEWS
Scranton, Pa.

Secretarial Club, 1-2; K. W. O., 1-2; Masque and Harlequin, 1-2.

BERNICE L. MILLER
Scranton, Pa.

Orange and Blue, 2; Secretarial Club, 1-2; Treasurer, 2; K. W. O., 1-2; Kappa Sigma Chi, 2; Tribunal, 2; Keystone Staff, 1-2; Nokomian Staff, 1-2; Hockey, 2; Intramural Sports, 1-2; Masque and Harlequin, 1; Basketball, 2; Cheerleader, 1; Riding Club, 1-2.



JOSEPH J. MCGUIRE
West Pittston, Pa.

Keys, 2; Kappa Sigma Epsilon, 1-2; Wrestling, 2; Intramural Sports, 1-2.

JOHN G. MOFFAT, JR.
Scranton, Pa.

Kappa Beta Sigma, 1-2; Radio Club, 1-2, President. 2; Aviation Club, 2.

BARNEY is a cut-up . . . Blonde tornado . . . The most fun ever . . . A happy-go-lucky who is welcome anywhere . . . Loves to laugh and play—has a "Heck" of a good time . . . Mania for making up queer nicknames . . . Dancing . . . Sports . . . Always going.

SINCERELY earnest . . . Prexy of Radio Club—Station W8TCS . . . of the order of Kappa Beta Sigma . . . You'll find him at the airport—another C. A. A. pilot . . . Quiet humor.

"DREAMS OUT" some sweet music . . . Tall and handsome . . . an ardent admirer of Artie Shaw . . . Club No. 19 . . . Owl . . . Ham and eggs . . . Beer and pretzels . . . Wind and rain . . . Coffee and doughnuts—Norris and Seamans.

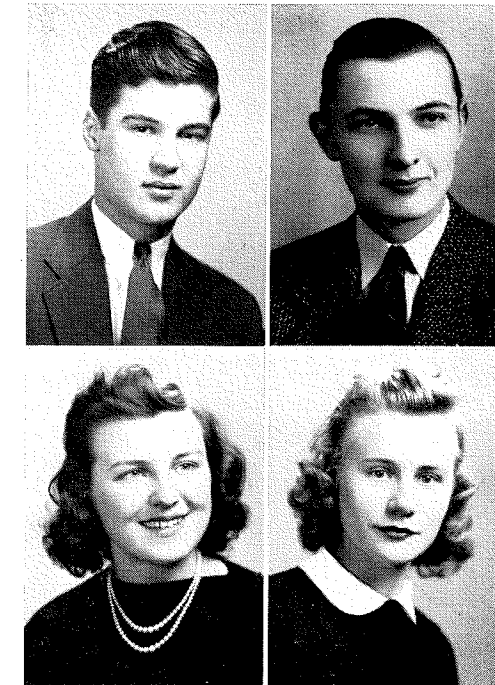
THE best of good fellows . . . "Dusty" . . . His ability to get to all his classes on time is a standing mystery . . . C. A. A. pilot . . . Good fellow to have fun with . . . Good natured . . . Irish humor.

PAUL M. NORRIS
New Milford, Pa.

Glee Club, 1-2; Kappa Sigma Epsilon, 1-2; French Club, 1; Intramural Sports, 1-2; Football, 1; Basketball, 1; KeyTonians, 2; Concert Association, 1.

RUTH M. OLEVICH
Scranton, Pa.

Sigma Mu Alpha, 1-2; Secretarial Club, 1-2; Camera Club, 2; Radio Club, 2; K. W. O., 1-2; Glee Club, 1-2; Kappa Sigma Chi, 1-2, Secretary, 2; I. R. C., 1-2, Secretary, 2; Keystone Staff, 1-2, Feature Editor, 2; Nokomian Staff, 1-2, Assistant Editor, 2; Masque and Harlequin, 1-2; Concert Association, 1; Honorary Society, 2.



JOSEPH O'HEARN
Scranton, Pa.

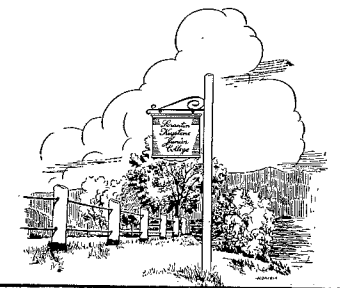
Kappa Sigma Chi, 1-2; Kappa Sigma Epsilon, 1-2; I. R. C., 2; Aviation, 2; Camera Club, 2; Intramural Sports, 1-2.

FRANCES C. ORŁOWSKI
Dupont, Pa.

Sigma Mu Alpha, 1-2; Secretarial Club, 1-2; K. W. O., 1-2; Glee Club, 1-2; Kappa Sigma Chi, 1-2; Masque and Harlequin, 1-2; Concert Association, 1.

ONLY superlatives to describe Ruth . . . Efficient . . . Capable . . . Reliable . . . Hardworking . . . Industrious . . . Med Sec . . . Excels as scholar and writer . . . The best of all good qualities have met in Ruth.

ONE of the alto mainstays of the Glee Club . . . Brisk and efficient . . . Spic and span, especially in her white uniform . . . Pretty secretary for some lucky doctor.



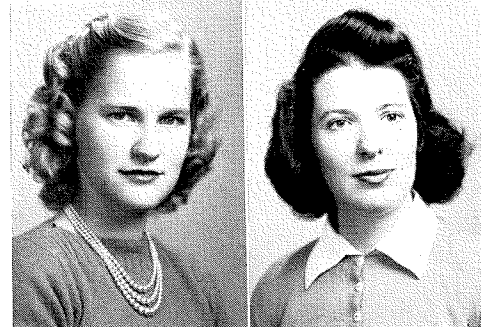
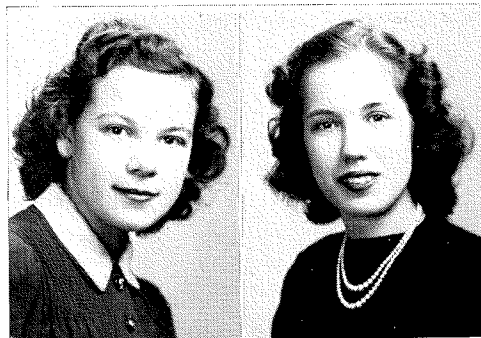
ENERGETIC describes Marie...
Cheery, infectious laughter... Our
Academy Award for graceful dancing
... Serious moments working among
slides and test tubes... Good student
... Sweet and loving... Good-natured
... Vivacious.

MARIE T. PAPSON
Olyphant, Pa.

Sigma Mu Alpha, 1-2;
Secretarial Club, 1-2;
Camera Club, 2; Radio
Club, 2; K. W. O., 1-2;
Glee Club, 1-2 Kappa Sigma
Chi, 1-2, Vice-President, 2;
I. R. C., 2; **Keystonian** Staff,
1-2; **Nokomian** Staff, 1-2;
Masque and Harlequin, 1-2;
Concert Association, 1.

A. WINIFRED PAYNE
Susquehanna, Pa.

Orange and Blue, 2;
Sigma Mu Alpha, 1-2; Sec-
retarial Club, 1-2; K. W.
O., 1-2; Glee Club, 1, Vice-
President, 1; **Keystonian**
Staff, 2; Intramural Sports,
1; Basketball, 1-2, Assist-
ant Manager, 1, Manager, 2.



A CHARMING personality... Fine
qualities... Understanding...
Sympathetic... Will-power galore...
Twinkling eyes... Happy wielding a
tennis racket or a hockey stick...
Good sport... True friend... Keen
sense of humor.

ELIZABETH R. PARISE
Scranton, Pa.

Orange and Blue, 2;
Sigma Mu Alpha, 1-2; Sec-
retarial Club, 1-2; K. W.
O., 1-2; Glee Club, 1-2;
Kappa Sigma Chi, 1-2;
Nokomian Staff, 2; Hockey,
2; Intramural Sports, 1-2;
Basketball, 2; Concert Asso-
ciation, 1.

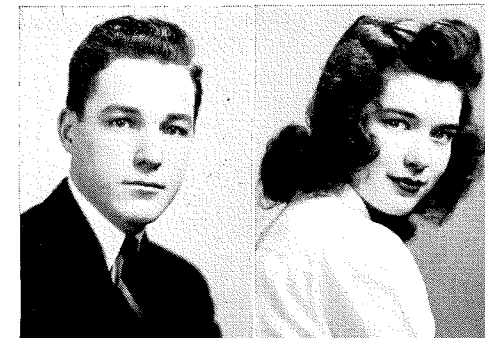
ELIZABETH F. PURCELL
Waverly, Pa.

Secretarial Club, 1-2; K.
W. O., 1-2; Hockey, 2;
Basketball, 1; Intramural
Sports, 1

"BUNNY." Handsome male—has all
the resources needed to get the
women—and does... The lover and
romeo of the Engineers... A basket-
ball star... "Champ" Pinochle player
... Sincere... Unassuming.

DONALD L. QUINNEY
Carbondale, Pa.

Varsity "K" Club, 1-2;
Kappa Sigma Epsilon, 1-2;
Intramural Sports, 1-2;
Basketball, 1-2.

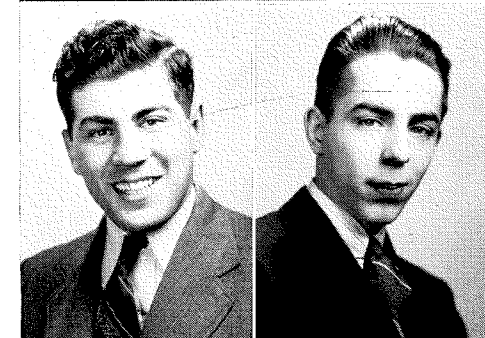


EVELYN M. SAILER
Scranton, Pa.

K. W. O., 1-2; Glee Club,
2; Kappa Sigma Chi, 2; I.
R. C., 1-2; Home Economics
Society, 1-2; Hockey, 1,
Manager 1; Intramural
Sports, 1-2; Masque and
Harlequin, 1-2, Secretary,
1, President, 2; Basketball,
2; Riding Club, 2; Fresh-
man, Vice-President; Orange
and Blue, 2; Honorary
Society, 2.

**NICHOLAS W.
SANDONE, JR.**
Chinchilla, Pa.

Varsity "K" Club, 1-2;
Wrestling, 1-2; Intramural
Sports, 1-2; Aviation Club,
2; Football, 1-2; Baseball,
1-2.



CHARLES M. SANKER
Scranton, Pa.

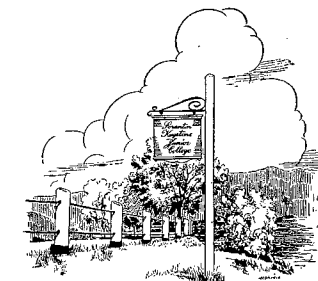
Student Council, 1-2;
Kappa Beta Sigma, 1-2;
Camera Club, 1; Debating,
1; I. R. C., 1-2; Masque
and Harlequin, 1-2.

PRETTY as a picture... Spun-gold
hair... Lovely voice that we don't
hear often enough... Always neat and
calm... Knack for wearing pastels
... Cuts capers with Cottagers Wagner
and Hinkley... Sincere... Quiet...
Efficient... Never without a cheery
greeting.

"TEBBY." "Bets" is an individualist
... Being different becomes her
... Has strong convictions... The per-
fect sports-clothes type... Outdoor
girl... Charming and ready smile...
Loved for her loyalty and unselfish-
ness.

"SANDY." "Nick." Football man...
Right good friend... Hard-work-
ing... Sincere... Grappler deluxe...
"Rochester"... His mother makes the
best spaghetti you'll ever eat.

"CHICK." Out for the best good of
Keystone... Debater... Active
Student Council member... Good
Kappa Beta Sigma man... Loves to
argue... Crazy laugh... Heckler.



"SPIRIT of adventure!" Most bouyant of personalities . . . Reigns as Queen of Cafe Society . . . Energetic Home Ec . . . Fun . . . Loyal to her many friends . . . Abounding in good spirits.

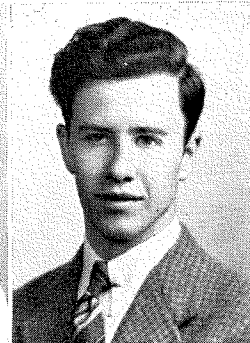
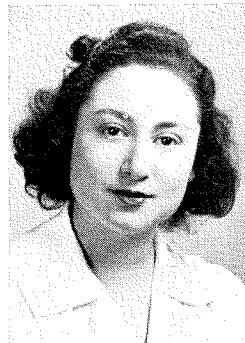
CAN BE a cut-up . . . Baseball pitcher of ability . . . Tennis-man . . . Basketball . . . Curly hair . . . Not so quiet as he looks . . . "Regular fellow."

"SMITTY." Engineer's spokesman . . . Liked by everybody . . . Very modest and considerate . . . Open-minded . . . "Happy Worrier" . . . Wacky and serious in turn . . . Do anything for a friend . . . A campus light . . . Noisy, energetic leader of the Engineers and soph president . . . Unbounded enthusiasm for anything, which explains his amazing capacity for work.

A TINY bundle of T. N. T. . . . A fellow who has a hidden sense of humor which causes uproars when it is revealed . . . C. A. A. man . . . Quiet . . . Industrious . . . Efficient . . . Friendly . . . A very real fellow.

TEMA SCHWARTZ
Scranton, Pa.

Camera Club, 1; K. W. O., 1-2; Glee Club, 2; Home Economics Society, 1-2; Masque and Harlequin, 1-2; Basketball, 2; Assistant Manager, 2; Intramural Sports, 1; I. R. C., 2; Nokomian Staff, 2.

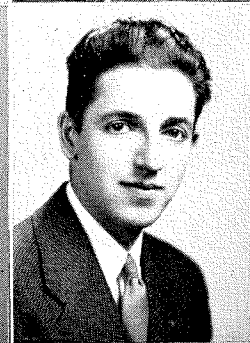
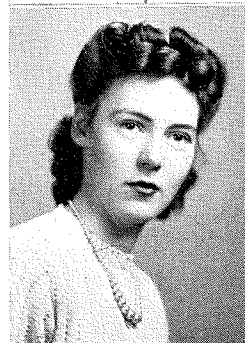


WALTER I. SHIMER
Carbondale, Pa.

Varsity "K" Club, 1-2; Intramural Sports, 1-2; Basketball, 1; Baseball, 1; Tennis, 1-2.

WALTER SINGLEVICH
Scranton, Pa.

Keys, 2; Camera Club, 1; Debating, 1; Kappa Sigma Chi, 1-2. President, 1-2; Kappa Sigma Epsilon, 2; Tribunal, 2; I. R. C., 1-2; Keystonian Staff, 2; Intramural Sports, 1-2; Freshman Handbook Editor, 2; Student Representative Alumni Association, 2; Honorary Society, 2.

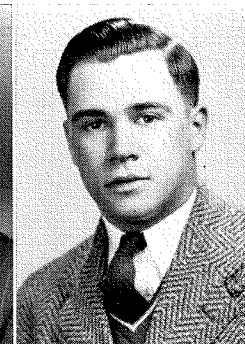
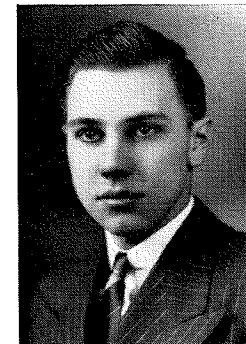


KATHRYN SHUMAKER
Waymart, Pa.

Secretarial Club, 1-2; K. W. O., 1-2; Intramural Sports, 1-2.

JAMES S. SMITH
Scranton, Pa.

Student Council, 1-2; Kappa Sigma Epsilon, 1-2. President, 2; Intramural Sports, 1-2; Masque and Harlequin, 1; Capwell Stewards, 1-2; Football, 2; Sophomore, President.

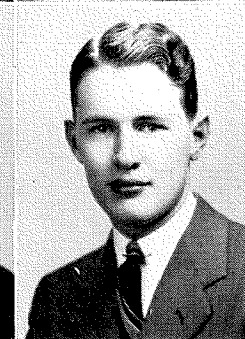
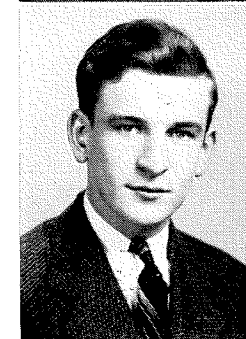


D. ERNEST STULL, JR.
Moosic, Pa.

Kappa Sigma Epsilon, 1-2; Intramural Sports, 1; Aviation Club, 1-2.

NICHOLAS SUPRON
Scranton, Pa.

Radio Club, 2; Vice-President, 2; Kappa Sigma Chi, 1-2; Kappa Sigma Epsilon, 1-2; Tribunal, 2; Nokomian Staff, 1-2; Intramural Sports, 1-2; Masque and Harlequin, 1.



CARL SWINDELHURST
Carbondale, Pa.

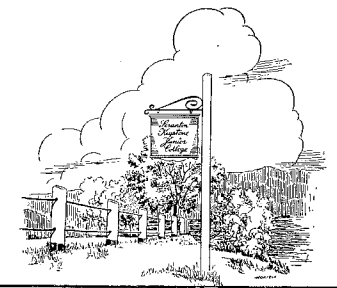
Student Council, 2; Secretarial Club, 1-2; Kappa Beta Sigma, 1-2, Secretary, 2; Intramural Sports, 1-2.

"KAYSIE." Witty . . . Original . . . Clever . . . Prankster . . . "Silver threads among the gold" . . . Cafe Society and Schuman's inmate . . . Individualist.

THE "Doc" expends more energy than an exploding atom, and all of it usefully . . . Energetic founder and president of Science Club . . . Gets more mail than Clark Gable . . . Witty . . . Brilliant . . . The days are short for him . . . A leader in anything he attempts, Walt has made his mark here, and will make it in the world.

"NED SPARKS" . . . Fog-horn voice . . . Mad as the proverbial hatter . . . Noisy . . . Witty . . . Brilliant . . . Happy-go-lucky . . . "Soup" . . . Took time out to join Cafe Society . . . Tennis enthusiast . . . Took a swim in the Nokomis in his freshman year (as per soph request) . . . crazy Engineer . . . and what a sense of humor.

MALE secretarial student at Keystone . . . Cattle Wagon King . . . Speed King in shorthand . . . Sets many of the girl's hearts a-flutter, but never gives them a break . . . Handsome . . . Blonde . . . A Kappa Beta Sigma man thru and thru.

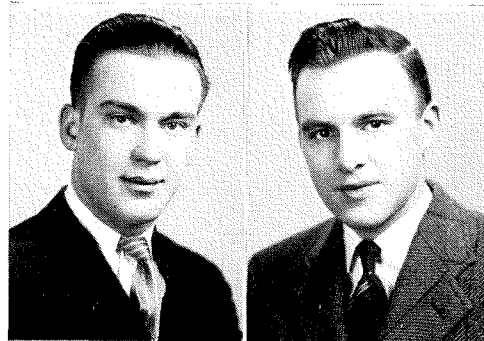


DILIGENT . . . Quiet . . . Modest . . .
Has a hidden sense of humor only
revealed at Keys meetings . . . Ener-
getic . . . Intelligent . . . An A student,
Walt is one man who gets A's with
apparently breath-taking simplicity . . .
Another wacky "slip-stick" man.

"HUCK"—all around man . . . Tennis
and basketball star . . . "Ooch,"
the way he shoots those baskets! One
of the best athletes in the school, but
he would never admit it . . . Inmate of
Club No. 19. (He's the last one—only
three in the room!) . . . Prexy of the
business men.

WALTER P. TELEP
Jermyn, Pa.

Keys, 2; Camera Club,
1-2, President, 2; Kappa
Sigma Chi, 1-2; Kappa
Sigma Epsilon, 1-2; Intra-
mural Sports, 1-2; Aviation
Club, 2.



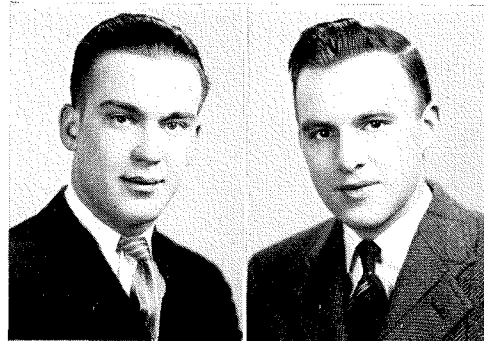
VERA P. TETLOCK
Scranton, Pa.

Secretarial Club, 1-2; K.
W. O., 1-2; Glee Club, 1-2;
Hockey, 1-2; Aviation Club,
2; KeyTonians, 2; Concert
Association, 1.



G. WALTER TENCH
West Pittston, Pa.

Keys, 2; Varsity "K"
Club, 1-2; Kappa Beta
Sigma, 1-2; President, 2;
Intramural Sports, 1-2;
Basketball, 1-2; Tennis,
1-2; Sophomore, Treasurer.



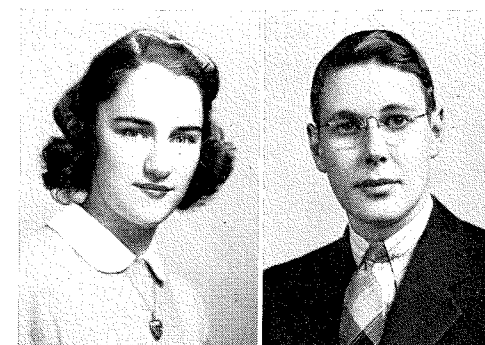
FLORENCE J. TOMILLO
Scranton, Pa.

Orange and Blue, 1-2-3;
Secretary, 2; Secretarial
Club, 1-2-3; K. W. O.,
1-2-3; Glee Club, 1; Tri-
bunal, 3; Hockey, 1-2-3;
Intramural Sports, 1-2-3;
Basketball, 1; Concert As-
sociation 1.



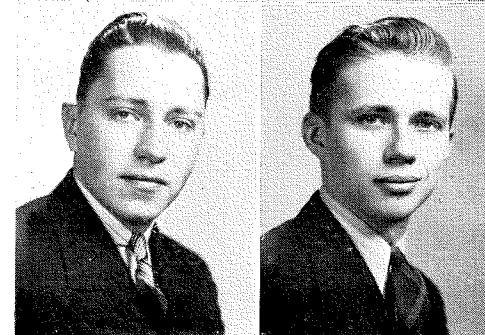
ELEANOR L. TUCK
Scranton, Pa.

Secretarial Club, 1-2; K.
W. O., 1-2; Nokomian Staff,
1-2; Intramural Sports, 1-2;
Masque and Harlequin, 1;
Riding Club, 1-2.



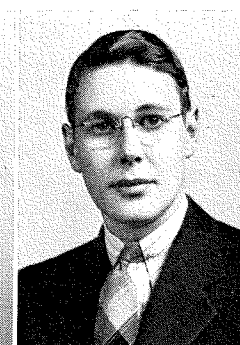
FRANCIS J. VALENTINE
New Milford, Pa.

Kappa Sigma Chi, 1-2;
Keystonian Staff, 2; Tennis,
1-2.



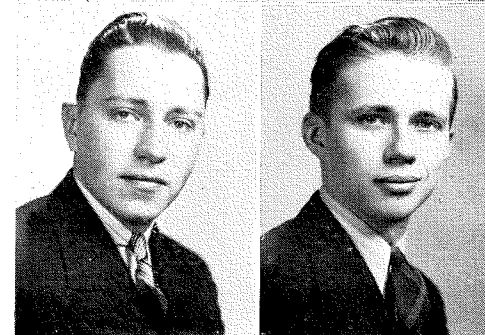
CHARLES W. TUTTLE
Hallstead, Pa.

Kappa Sigma Epsilon,
1-2; Intramural Sports,
1-2.



HIRAM VAN BLARIGAN
Scranton, Pa.

Camera Club, 1-2; Kappa
Sigma Chi 2; Kappa Sigma
Epsilon, 1-2; Intramural
Sports, 2.

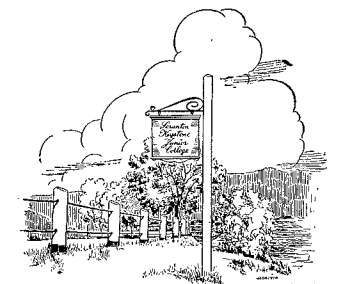


A MEDICAL Secretary taken to wings
. . . Blonde Bombshell . . . Snappy
majorette . . . Can carry a sweet tune
—sometimes sings with the KeyTonians
. . . Always on the go.

"FLOSSIE." Tiny, dark, frey . . .
Gorgeous eyes that are by turn
sweet and flashy . . . Haircomb that
every girl envies . . . Pretty clothes . . .
Dimples . . . Good sport . . . Can be
heckled as well as can heckle . . . Looks
nice playing hockey . . . Looks nice
anytime.

"VAL." "FLIP." Mad Doctor's
Society . . . Always time for a
smile and chat . . . Well-liked . . . Gen-
erous to a fault.

OF THE Capwell contingent . . . Fa-
miliar figure on the tennis court
. . . Jitterburg . . . Famous for his pump-
handle style of dancing . . . Ardent
worker . . . Happy Hi is always willing
to lead a helping hand.



THE eyes have it . . . Another Med Sec in the Queen's Court . . . Also athletic: standby of basketball and hockey teams . . . Friendly . . . Nice disposition . . . Wacky Wanda Wagner from Windsor . . . Personality plus . . . Cottage cutie.

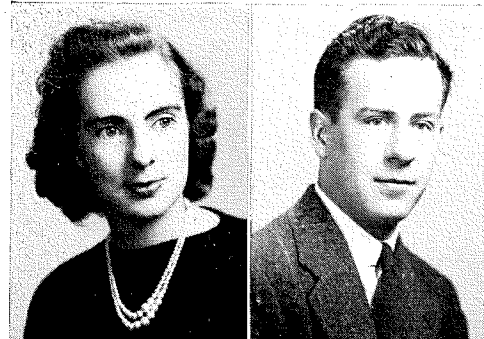
"PEE WEE." One of the "lazier" Engineers . . . Sense of humor . . . Dance trotter . . . Upholder of the honor of Hedgewood—mentor and advisor to Olsen, his protege . . . Social success . . . Royal good fun . . . Prince of good fellows.

NICE smile . . . Fluttery . . . Good fun . . . Favorite saying: "Do I have a cut coming?" . . . Giddy . . . Good-natured . . . Generous . . . Bread and butter . . . Salt and pepper . . . Pancakes and syrup . . . Nancy and Jack.

A MEDICAL Secretary who missed her calling—the perfect photographer's model . . . Dimples . . . Priceless smile . . . Smooth dancer . . . Sweet disposition . . . Remembered for her roll as Venus . . . Beauty has not dimmed her naturalness and sincerity.

WANDA M. WAGNER
Windsor, N. Y.

Orange and Blue, 1-2; Secretarial Club, 1-2; K. W. O., 1-2; Hockey, 1-2; Intramural Sports, 1-2; Basketball, 1-2, Captain, 2.



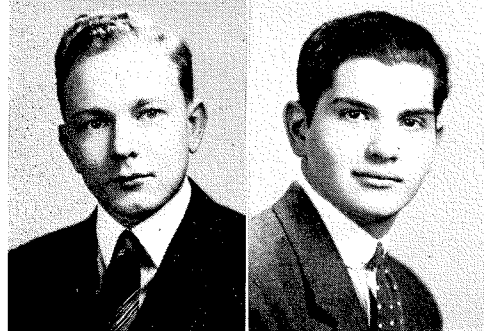
EARL WEIBERG
Scranton, Pa.

Kappa Sigma Epsilon, 1-2; Intramural Sports, 1-2; Masque and Harlequin, 1; Football, 1; Assistant Manager, 1.



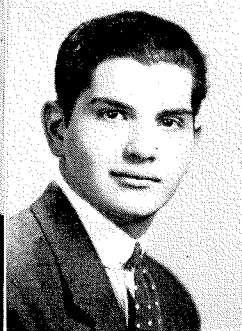
JOHN WILCOX, JR.
Clarks Summit, Pa.

Student Council, 1-2; Kappa Beta Sigma, 1-2; Glee Club, 1-2, President, 2; Intramural Sports, 1-2; Cheerleader, 1-2; Concert Association, 1; KeyTonians, 2.



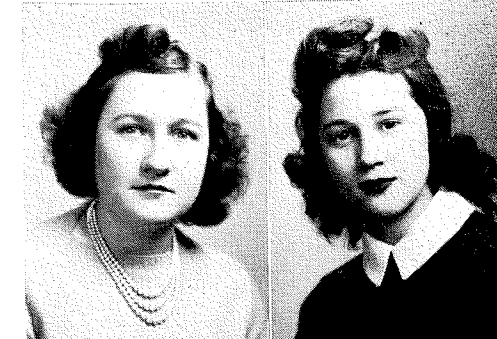
ALVIN WILENSKY
Scranton, Pa.

Keys, 2; Kappa Beta Sigma, 1-2; I. R. C., 2; Keystone Staff, 1-2; Business and Circulation Manager, 2; Nokomian Staff, 1-2; Business Manager, 2; Wrestling, 1-2; Intramural Sports, 1-2; Football, 1; Varsity "K" 2.



NANCY WILLIAMS
Scranton, Pa.

K. W. O., 1-2; Glee Club, 1-2; Keystone Staff, 2; Nokomian Staff, 2; French Club, 1-2; Hockey, 1; Riding Club, 2.



CLAIRE M. WYDEEN
LaPlume, Pa.

Orange and Blue, 1-2; Sigma Mu Alpha, 1-2, Secretary-Treasurer, 2; Secretarial Club, 1-2; K. W. O., 1-2; Kappa Sigma Chi, 1-2; Hockey, 1-2; Intramural Sports, 1-2, Basketball, 1-2.



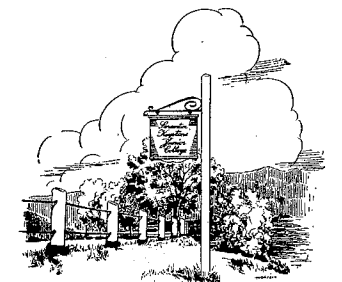
JANET A. SMITH
Scranton, Pa.

Student Council, 2; Masque and Harlequin, 1-2; K. W. O., 1-2; I. R. C., 2; Home Economics Society, 2; Intramural Sports, 1-2; Basketball, 2; Secretarial Club, 2.

BEAUTIFUL and Brown and Big—Oh, them eyes! . . . Of Janet it can be said, "She was made for happy thoughts" . . . Home Ec'er . . . Kind . . . Thoughtful . . . Generous . . . Popular as can be . . . Never still a minute.

"CLARKS Summit Romeo" . . . Glee Club Prexy . . . Sings with KeyTonians . . . Seen with Nancy . . . Cottage Lounge lizard . . . Heart and soul a business man . . . Peppy, enthusiastic cheerleader . . . Nice fellow.

"ANGEL." Business man . . . Roistering . . . Rollicking . . . Rampaging . . . Mrs. Beam's pride and joy . . . Picturesque figure on the mats (viz: "Angel") . . . "Buy at Wilensky's" . . . Never saw him mad yet . . . If you hear raucous, good-natured laughter, it's Al.



CLASS OF 1941 POLL

1. Your sex? Male, 45; Female, 42.
2. Do you plan to go elsewhere to college? Yes, 41; No, 21; Indefinite, 25. Where? Lehigh, Penn State, Indefinite.
3. How much annual salary do you expect to be receiving five years from now? \$1,000 to \$5,000. Average \$1,500.
4. What course did you find most profitable? Bacteriology, Accounting, Psychology, Chemistry, English, Shorthand.
5. What course was most enjoyable? Psychology, Typing, Chemistry, Philosophy, Bacteriology.
6. What student has done most for Keystone? Walter Singlevich.
7. What student has done the most for the class? James S. Smith, Walter Singlevich, Robert Huber.
8. Most typical Keystone man? Robert Huber, James S. Smith.
9. Most typical Keystone woman? Florence Gillespie, Bernice Miller, Evelyn Sailer.
10. Best athlete? (Female) Wanda Wagner, Rita Maholchic.
11. Best athlete? (Male) Bruce Bloxham, Nicholas Sandone.
12. Best writer? Bernard Endelman, Florence Gillespie.
13. Best speaker? Walter Singlevich, Florence Gillespie, Bernard Endelmen.
14. Most popular man? Robert Huber, James S. Smith, (tie).
15. Most popular woman? Evelyn Sailer.
16. Most modest student? Ruth Olevich, Charles Tuttle.
17. Least appreciated student? Edwin Davenport.
18. Best student? Walter Singlevich, Ruth Olevich, Barbara Burns.
19. Most likely to succeed? Walter Singlevich.
20. Best natured? Ruth Olevich, Marie Papson, Lois Gardner, Evelyn Sailer.
21. Wittiest? Bernard Endelman.
22. Most energetic? Florence Gillespie, Peter J. Ghirelli, Tema Schwartz, Walter Singlevich.
23. Most handsome? Donald Quinney.
24. Most original? Helen Bartels, Kathryn Shumaker, Lois Gardner.
25. Most beautiful? Evelyn Sailer, Claire Wydeen.
26. Most brilliant? Walter Singlevich, Barbara Burns, Ruth Olevich.
27. Most versatile? Florence Gillespie.

CLASS OF 1941 POLL---Continued

28. Noisiest student? Peter J. Ghirelli, Alvin Wilensky, "Any Engineer."
29. Most bashful? Warren Conrad.
30. Best politician? Bernard Endelman, Walter Singlevich (tie).
31. Most reliable? Richard Herron, Florence Gillespie, Ruth Olevich (tie).
32. Most unselfish? Betty Purcell.
33. Favorite author? Lloyd Douglas, Sinclair Lewis, Margaret Mitchell.
34. Favorite actor? Charles Boyer, Clark Gable, Spencer Tracy (tie), James Stewart.
35. Favorite actress? Bette Davis.
36. Favorite play or movie of the year? Gone With The Wind, Philadelphia Story, Kitty Foyle, Rebecca, All This and Heaven Too.
37. Favorite magazine? Reader's Digest, Life, Mademoiselle, The Saturday Evening Post.
38. Favorite newspaper? Scranton Tribune, New York Times.
39. Favorite sport? Basketball, Swimming.
40. Favorite amusement? Dancing.
41. Favorite political party? Republican, 68%; Democratic, 17%; Independent, 12%; Socialist, 3%.
42. Most helpful Keystone activity? Keys, Orange and Blue, Kappa Sigma Chi, Keystoneian.
43. Most enjoyable Keystone activity? K. W. O., Danes, Orange and Blue, I. R. C.
44. Highest undergraduate honor? Dean's List, Keys, Honorary Society.
45. Would you support U. S. participation in a war to defend the Western Hemisphere? Yes, 81%; No, 16%; Doubtful, 3%.
46. Would you support a defensive war on our own territory? Yes, 98%; No, 2%.
47. Would you refuse to support any war? No, 87%; Yes, 13%.
48. If Great Britain is defeated in the present war, do you feel that the United States is in imminent danger? No, 69%; Yes, 31%.
49. Should labor union strikes in defense industries be outlawed? Yes, 95%; No, 5%.
50. Should the United States navy be used to convoy merchant ships across the Atlantic? No, 91%; Yes, 9%.

MAY DAY, 1941

A GLORIOUS, sunlit afternoon in May...the rays of the sun streaming through the full spreading maples, the sturdy, ancient beeches, the tall, regal hemlocks of the front campus...the chattering squirrels running industriously to and fro...the almost awed, hushed song of the denisons of the trees...the earth soft and lush under the feet...such was the setting for the coronation of the Queen of the May Day during the annual May Day pageant, May 15.

The Queen, Evelyn Sailer, perhaps could more appropriately be referred to as a princess, for she was not regal, tall, awe inspiring, but seemed more the child of her surroundings—of Nature. She was sprightly, demure, sparkling—in short, very much alive. It was the crowning of a woodland princess, rather than that of a cool Greek goddess. This to us seemed more appropriate for Keystone, the college with the country campus.

Not very much eclipsed were the members of her court, fit consorts for any Queen.

Barbara Burns—tall, regal, with the spirit of a thoroughbred in her eyes... Marie Coolbaugh—flashing, dark, vivacious... Marie Finnerty—pert, pretty... Winifred Payne—cool, blonde, gentle... Wanda Wagner—gray-eyed, sturdy, slim, and fresh... and Claire Wydeen—statuesque as cold, white ivory, flowing blonde hair, clear blue eyes.

.... thus were the fairest of the fair of Keystone extolled.



EVELYN SAILER



Class of 1942 Officers

Seated, Janet Seamans, secretary; Myrtle Jarman, vice-president.

Standing, George W. Campbell, Jr., president; James Seamans, treasurer.

CLASS OF 1942

In the beginning . . .

DO YOU remember a group of students on the steps of Harris last September 15, nervously reading the KEY-STONIAN, while waiting for the doors to be opened? That was the beginning of us, the class of 1942. Now it is almost time for us to assume the responsibilities assigned us by the sophomores of '41. Soon we too will be sophomores ready to take the places so ably filled by our predecessors.

Do you also remember wearing the hated dink with the significant button, slinking in the back door and sneaking out the front? Remember "sounding off," and appearing in public in outfits that made you wish fervently to be home in bed or some place equally inconspicuous? And always was the constant reminder that "you are getting off easily compared to what we had to go through." Well, those days are over and we can now look forward to revenge *a la* class of '43.

But to look at the happier aspects of "Freshmen daze." There was the Big Little Sister tea for the freshmen women and the picnic supper back campus for the whole freshman class by the sophs! There was the tug-of-war and ensuing victory dance . . . not so pleasant as we lost the first and had to pay for the second. Then came the organization of various clubs and athletic teams which furnished us pleasure.

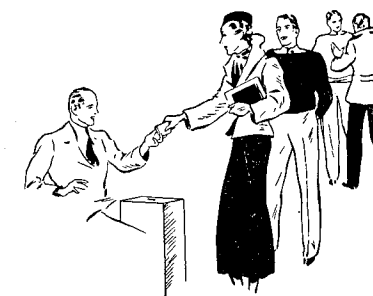
In the beginning---continued

The time slid by all too quickly until exam time. After that ordeal was over we were rewarded by a week's vacation. Then back to school again with new resolves and fresh vigor. Basketball season was in full swing, and the intramurals proved to be very successful with plenty of participants and enthusiasm. Spring vacation took us by surprise. We spent this time, or most of it, in the library assembling material for our term papers. What a relief when they were finally handed in. Spring slipped in.

May Day and the following dance left us with pleasant memories to fortify us for the last few weeks of hard work. With the banquets and final meetings of the various organizations the year drew to a close. The realization that the class of '41 and some of our own members will soon be leaving looms large on our horizon. It will be with lumps in our throats that we will say goodbye to our friends and helpmates, the sophs, for the past year, even if they did call us "rat" in the beginning.

It is a tremendous responsibility we have to assume, but the task should not be too great if the individual responsibility is realized. It won't be long now, so let's face the coming year with optimism and courage.

Here's to the Class of '42.



Activities

41

The college is a small world thru which we pass on our journeys toward certain goals . . . In our brief time here we learned mutual cooperation . . . teamwork . . . fine comradeship . . . Better fitted, we pass out the portals to the world . . .



HARRIS HALL



1st row, l. to r., Magor, Brile, Graham, Klein, Hoffman, Cetta, Floyd, Sailer.
2nd row, l. to r., Wydeen, Papson, Endelman, Wilensky, Gillespie, Campbell, Coolbaugh, Olevich, Miller.
3rd row, l. to r., Jones, Steekbeck, Supron, Kareha, Golden, Howe, Williams, Parise, Powell, Schwartz, Walter, Rivenburg.

NOKOMIAN STAFF

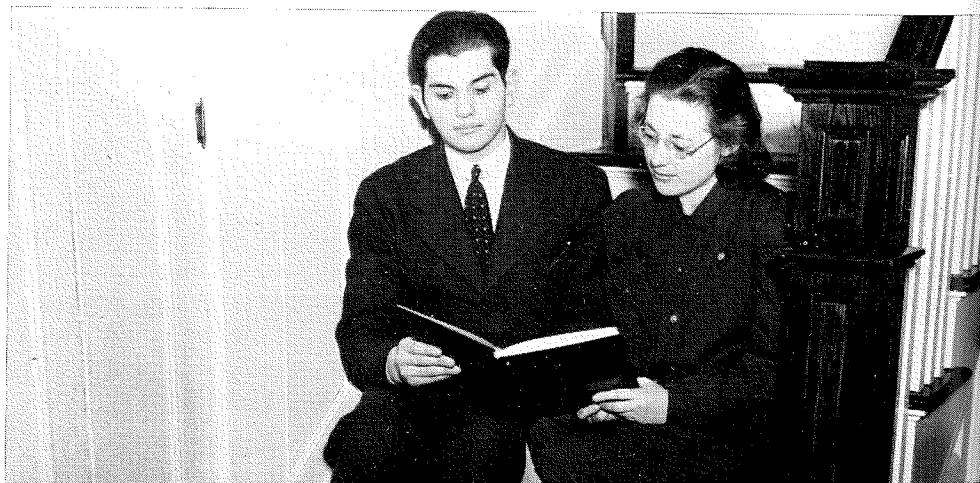
THE *Nokomian* has endeavored to make a permanent record of incidents during your year or two at Keystone. Words and photographs can not adequately express all we feel. But the staff pictured above, with the encouragement and help of I. A. Spalding, Jr., faculty adviser, have tried to present a picture of every phase of Keystone life, from the time you entered its gates as a "rat" to the time you proudly received the coveted diploma as an honorable sophomore.

Soon we will all be scattered and may not be able to return to Keystone for many years. The *Nokomian* will act as a panacea when we begin to get a nostalgic feeling for the sight of the classrooms, the "cafe," the Nokomis, the athletic fields, the campus, and everything else that is Keystone.

We will want to remember our activities, our classmates, our athletics, our faculty, the trivia—the small things, the constant everyday associations.

May the 1941 *Nokomian* recall some of the pleasant times of youth.

Alvin Wilensky, business manager, and Florence L. Gillespie, editor-in-chief.



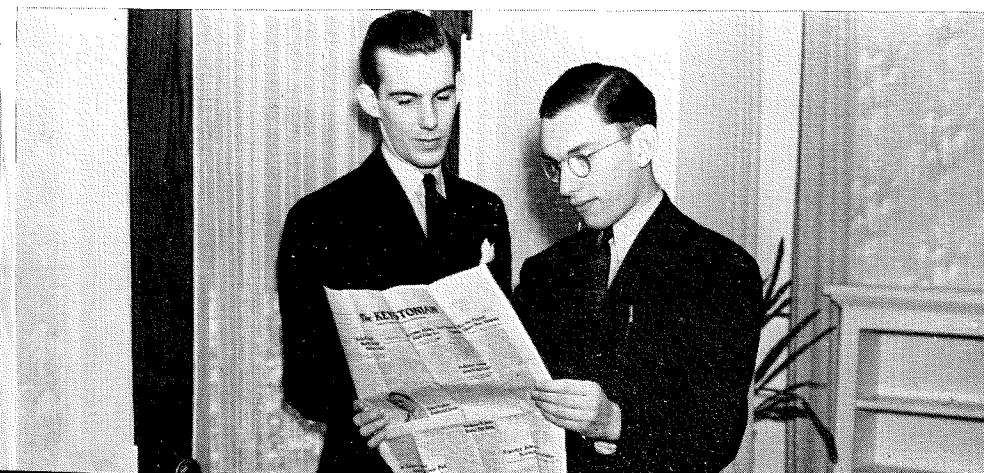
1st row, l. to r., Magor, Payne, Brile, Graham, Rivenburg, Cetta, Floyd, Sailer.
2nd row, l. to r., Papson, Gillespie, Endelman, Wilensky, Campbell, Coolbaugh, Olevich.
3rd row, l. to r., Golden, Klein, Howe, Kappal, Williams, Jones, McDonough, Miller, Huber, Jowell, Grudis, Single-vich.



KEYSTONIAN STAFF

UNDER the capable editorship of Bernard Endelman and George Campbell, THE KEYSTONIAN has proved to be a vital school newspaper. We all looked forward to the day it would be out, to read about all the latest sports, gossip and news of the school. To such writers as George Campbell, Bernard Endelman, Florence Gillespie, Ruth Olevich, Marie Papson and others we owe its success for the past year. To Irving A. Spalding, Jr., faculty advisor, should go credit for his untiring efforts to help get the copy "off to press."

Although there was much headscratching, pencil chewing and hasty scribbling, all in all, this year has been a success.



l. to r., George W. Campbell, Jr., and Bernard Endelman.

STUDENT COUNCIL

THE purpose of the Student Council is to uphold old traditions and to build high morale at Keystone; hand in hand with this, it encourages students to govern themselves. It is a legislative and judicial body, composed of freshman and sophomore class representatives. The members are elected annually by popular vote. The Council meets regularly twice a month, and special meetings are held when necessary.

This year the Council sponsored the Thursday noon dances and Monday evening Barn Dances; acted as student guides at Keystone affairs, Homecoming, Career Forum Day, and assisted in the May Day celebration.

It is a valuable and necessary organization on the Keystone Campus, and with the whole-hearted cooperation and support of the student body it will continue to be so.

Officers are: Robert Huber, president; Myrtle Jarman, secretary. Those elected to the Council are: sophomores, Barbara Burns, Florence Gillespie, Robert Huber, Charles Sanker, James S. Smith, Carl Swindlehurst, and John Wilcox, Jr.; freshmen, Michael Belensky, Dorothea Deichmiller, Myrtle Jarman, Charles LaFontaine, Janet Smith, and Earl J. Walker.



1st row, l. to r.: Gillespie, Wilcox, Huber, Jarman, Sanker.
2nd row, l. to r.: Smith, LaFontaine, Deichmiller, Smith, Walker, Swindlehurst.

STUDENT COUNCIL OF MOORE HALL

THE boarding men of Moore Hall resolved during the year 1940-41 to elect a council of administrators to provide rules and regulations of these students. Bruce Bloxam, Frank Savo, Casey O'Connor, Patrick Walsh, and James Lewis were elected to these posts, and in conferences with the other students in the dorm, formulated rules concerning study hours, retiring hours, neatness and conduct.

With the advice of Dr. Gene Wallar and Norton Beach the rules were enforced and successfully carried out. Harmony was noted throughout the entire year and general cooperation demonstrated the effectiveness of such self-government.



l. to r.: Savo, O'Connor, Lewis, Walsh, Bloxam.

HONORARY SOCIETY

THE Deans' List and Honor List have long been the greatest honors to which the students at Keystone could aspire; these have been considered the ultimate in scholastic attainment. This year, however, plans were completed to create a society, membership in which will be a still greater honor for those who make commendable records in their various courses.

Membership in the Honor Society depends upon several requirements, the most important of which is a set scholastic record. Those attaining an average of B or better, and who are in the upper 10% of their class are eligible for membership. At least one semester's work at the school must be completed before consideration for membership. To maintain active membership after obtaining admission into the group, the average must be kept at B or better.

The present members include both sophomores and freshmen. They are: Neil Banfield, Barbara Brewster, Barbara Burns, George Campbell, Marie Cetta, Marie Coolbaugh, Virginia Curry, Annette Dziama, Florence Gillespie, Robert Huber, Parks Landis, Ruth Olevich, Olga Sabbatini, Evelyn Sailer, Walter Singlevich, Jane Sunday, Jean Thomas, Claire Ventanni, and Grace Weidaw.



THE KEYS

THE Keys Society is the men's honorary society on our campus. Its membership is composed of those ten sophomore men who have placed highest in a merit system, due to active participation in school affairs during their freshman year.

These points are awarded according to the established standard of the society; first, for scholarship, and second, for extra-curricular activity. These may be athletics, either varsity, intra-mural, or inter-mural; clubs; or any other organization on the campus. Special credit is given to class officers and officers of clubs.

This year the Keys, under the supervision of Professors Ben. J. Trapani and Charles Oswald, have begun a new educational program. The society has tried to be a benefit to the college by sponsoring speakers at convocation, educational motion pictures, as well as Hollywood productions.

The familiar white Keys hats have disappeared from the campus, but in their place one can recognize the novel orange and blue Keys emblem surmounted by the regular Keys insignia.

There are no social affairs conducted by the society other than private dinner meetings of the organization. There are no officers of the society, each member serves as chairman and secretary in alphabetical order.

This year the organization has made basic plans for the coming year, making it easier for the future members to accomplish much more educationally.



1st row, l. to r.: Singlevich, Charles T. Oswald, Coffman, Telep.

2nd row, l. to r.: Endelman, Wilensky, Huber, Hoffman, Tench, Fitze.



WOMEN'S ORGANIZATION

THE Keystone Women's Organization, or K. W. O. as it is more briefly and familiarly known, is a loose organization of all Keystone women, having as its purpose the promoting of sociability and fellowship among the various women's groups. Miss Lucile Scheuer, Dean of Women, is the faculty advisor. At the organization's first business meeting in October, Florence Gillespie was elected president; Lois Gardner, secretary; Dorothy Walter, vice-president; and Marian Weber, treasurer.

Members of the K. W. O. have enjoyed a number of varied activities during the year. Included were the "Big Sister" tea; a Halloween Party; a Reading, and several teas.

The K. W. O. "Under The Big Top" dance was held in April with Evelyn Sailer and Lois Gardner as co-chairmen. The theme of the dance was a circus, and the decorations were in keeping with this idea. Candied apples and punch were sold at circus booths and circus murals decorated the walls. This dance brought the K. W. O. activities of this year to a successful close.



l. to r.: Gardner, Gillespie, Walter, Weber.



INTERNATIONAL RELATIONS CLUB

DURING 1940-41, the International Relations Club took its stand as one of the most important Keystone organizations. Its purpose to increase interest in current events was successful and through movies, discussions and forums attained this objective.

The club participated in the inter-collegiate regional conference at Washington and was represented by a large group of students.

Polls and surveys were conducted by the club and the interest shown by the entire student body in these affairs indicated the prime necessity of such an organization. R. M. Lightfoot, Jr., faculty advisor, was the guiding light and counselor of these world-affair students.

Officers for the year were: Robert Huber, president; Florence Gillespie, Vice-president; and Ruth Olevich, Secretary.



1st row, l. to r.: Sailer, Coolbaugh, Papson, Bartels.
2nd row, l. to r.: Olevich, R. M. Lightfoot, Jr. (advisor), Gillespie.
3rd row, l. to r.: Olsen, Singlevich, Schwartz, Sanker, Huber, Smith, Endelman, Wilensky.

ORANGE AND BLUE

ALTHOUGH primarily an athletic association, the Orange and Blue is fast growing into one of the most outstanding extra-curricular organizations on the campus. Its membership consists of women who have received a major or minor award for participation in a sport.

Its presence has been keenly felt during the year, first during football season when the club sold hot dogs at the games; then at Christmas, the group sponsored a successful Silver Ball.

The faculty advisor, who is also the Director of Womens' Athletics, is Miss Doris (Pudge) Smith. The officers, elected in September, were: President, Evelyn Baer; Vice-President, Lois Gardner; and Secretary-Treasurer, Florence Tomillo. Following the marriage of the president, Lois Gardner assumed leadership for the remainder of the year.



1st row, l. to r.: Purcell, Deichmiller, Johnson, Sailer, Johler, Miller, Jarman.
2nd row, l. to r.: Wagner, Finn, Hinkley, Smith, Gardner, Wydeen, Bartels, Tomillo.
3rd row, l. to r.: Payne, Rivenburg, Brile, Slocum, Maholchic, Brewster, Weber, Finnerty, Sunday, Capwell.

VARSITY "K" CLUB

THE Varsity "K" Club is composed of those men who have won a major letter in athletics and who have, in the opinion of the club membership, displayed good sportsmanship in all activities. Major awards are given to those who have played in a majority of the games in either baseball, basketball, or football and to the managers of these sports. The awards are also given to each member of the wrestling team who has won all his matches and to the captains of the tennis and wrestling teams.

As an organization, the group encourages a feeling of good sportsmanship among the students. In accordance with this policy the club has donated numerous trophies to the school as awards in intra-mural competition. In addition, it sponsors many social activities and thus provides its members with an opportunity to earn a sweater.

This is the seventh year the club has functioned. Its present membership consists of over twenty-five students, making it one of the most influential, successful, and respected organizations of Keystone.



1st row, l. to r.: McDonough, Kolb.
2nd row, l. to r.: Ghirelli Conner, Walker, Bloxham, Fitze, Tench, Jones.
3rd row, l. to r.: Wilenksy, Kappral, Seamans, Klein, Chivers, LaFontaine, Pallman, Belardi.

CAPWELL STEWARDS

SINCE the dedication of Capwell Science Hall in November, 1938, a group of seven engineers have been functioning as Capwell Stewards. These men are appointed by Doctor Strelzoff and the Engineering Society, Kappa Sigma Epsilon, to make up for the number depleted each year by graduation.

It is the duty of the Stewards to act as student police in Capwell Hall and to inform Doctor Strelzoff of the needs of the building from the student's viewpoint.

The Stewards this year are James S. Smith, Peter Ghirelli, Robert Hoffman, Robert Coffman, Tom Davis, Gustave Schneider, and Frank Senkowsky.



1st row, l. to r.: Ghirelli, Dr. Strelzoff, advisor; Smith.
2nd row, l. to r.: Hoffman, Coffman, Schneider, Senkowsky.

KAPPA SIGMA EPSILON

ONE of the foremost fraternal organizations on campus, Kappa Sigma Epsilon, was organized fundamentally to bring about a closer relationship among the better, more advanced engineering schools. The society also organizes field trips, two each year, to various establishments employing engineers. As a result, students receive an inside view of the engineer's life and study.

As proof of their versatility, the engineers engage in intramural basketball and softball, and emerged successful in the latter campaign for two successive years, 1938-39.

It is also an undeniable fact that the Engineers are prominent in Keystone's extra-curricular activities. They are well represented in the class offices, the Student Council, the Key's Society, the Varsity "K" and Aviation Clubs, and many other organizations and activities. Thus we may well conclude that the engineers are in every way gentlemen, athletes, scholars, and leaders on, as well as off, Keystone's campus.

Officers are: James S. Smith, president; Peter Ghirelli, vice-president; Robert Coffman, secretary; and Carl Gerhardt, treasurer.



SIGMA MU ALPHA

THE Sigma Mu Alpha honorary society for the Medical Secretaries of the college is highly recognized because of the high standards required for membership. It has succeeded very well in its original purpose, which is to promote higher scholastic standing and organization among the medical secretaries, since only those girls who attain a certain scholastic standing, who participate in social activities, and who possess desirable character, may belong to the group.

The purpose of this club however, is not only to supply an incentive for scholastic ability but also to offer social recreation for its members. It is one of the most active organizations on the campus, giving several teas and a banquet during the year for the whole department as well as the secretaries themselves. Entertaining and educational lectures by prominent physicians, technicians, and bacteriologists are heard by the members.

At the end of the year, members from the entering class are chosen by Dr. Frederic B. Davies, faculty advisor, along with the members of the organization. The members hold rush parties and initiations to introduce their successors to the Sigma Mu Alpha.

Officers are: Marie Finnerty, president; Claire Wydeen, secretary-treasurer; and Marie Papon, reporter.



1st row, l. to r.: Papon, Payne, Evans.
2nd row, l. to r.: Kosydar, Wydeen, Dr. Davies, Finnerty.
3rd row, l. to r.: Parise, Magor, Olevich, Orlowski.

SECRETARIAL CLUB

THE Secretarial Club, consisting of approximately one hundred secretaries, medical secretaries, and general business students, was originated for the purpose of acquainting its members with the various functions of the business world, to provide closer contact between the students, and to assist students in gaining employment.

Among its many and varied activities, the club presented several concerts and "cocoa parties," in addition to a sound film of the opera *Faust*. The Secretarial Club was the first Keystone organization to present monthly concerts of classical music for the enjoyment and cultural development of its members.

This year the group sponsored "The Patriotic Ball," its second annual dance, which was one of the most successful dances of the school year.

Under the efficient leadership of Peter P. Stapay, faculty advisor, and a group of capable officers, the Secretarial Club has been one of the most active and enjoyable organizations on campus during the past year.

Officers of the club are: Marie Coolbaugh, president; Myrtle Jarman, vice-president; Rita Maholchic and Janet Seamans, secretaries; Bernice Miller and Dorothea Deichmiller, treasurers; and Marjorie Heebner and Edwin Olsen, reporters.





AVIATION CLUB

THE Aviation Club, an organized group which is a chapter of the National Aeronautics Association, was formed in November, 1939. It is composed of students who have taken the Aviation Course.

The objectives of the club are: To interest students of Keystone in the science of aeronautics; to promote college flying generally; and to aid insofar as possible the program and purposes of the National Aeronautic Association, looking toward the continual advancement of aviation. The Club has as its flying base the Scranton Airport, and there the fledglings have learned the intricacies of lanes and flying. Unlike other campus groups, "Keystone Wings" has had no regular meetings and is bound together solely because of the common interest of its members in flying.

The organization, under the leadership of Dr. Joseph A. Strelzoff, has been a very beneficial club on the campus.



1st row, l. to r.: Mills, Moffat, Butchko, Huber, John Smith, flight instructor, Sandone.
2nd row, l. to r.: Gerhardt, Waldis, Stull, Wright, Lipman, Telep.
3rd row, l. to r.: Dean, Tetlock, Wilcox, Dr. Strelzoff, instructor.



CAMERA CLUB

ONE of the organizations of Keystone that has shown remarkable growth and improvement is the Camera Club, which was started by Mr. Oswald three short years ago, boasting little equipment and limited quarters. Today, it has three dark rooms and equipment which enables it to do unusually good photographic work.

Although the meetings have been informal and few in number this year, the students are availing themselves of the opportunities which membership in the club provides and are becoming photographic experts.

Club officers are: Walter Telep, president; Anthony Butchko, treasurer; and Marion Capwell, secretary.



1st row, l. to r.: Chipak, Mr. Charles Oswald, advisor; Butchko, Capwell.
2nd row, l. to r.: Telep, Singlevich, Papson, Olevich, Robinson, Fordham.

HOME ECONOMICS

THE Home Economics Society is an organization for all students in the Home Economics Department. While it is one of the newer organizations on the campus, it can boast of a fine group of girls.

Lois Gardner is president; Marian Capwell, secretary-treasurer; and Marjorie Wolfe, reporter. Miss Anabel D. Zimmerman is the club adviser.

Among its present thirteen members are eight sophomores: Marian Capwell, Marion Bruning, Romaine Finn, Lois Gardner, Vera Hoffman, Sylvia Horvitch, Evelyn Sailer, and Tema Schwartz; and five freshmen: Janet Smith, Ida Stump, Marion Weber, Marjorie Wolfe, and Jeanne Volz.

In addition to the many very successful teas and parties held by the Home Ec'ers this year, they will also be remembered for their knitting, which they and other students on the campus did for the Red Cross.



1st row, l. to r.: Sailer, Horvitch.
2nd row, l. to r.: Capwell, Schwartz, Gardner, Finn, Smith, Wolfe.
3rd row, l. to r.: Bruning, Miss Anabel Zimmerman, advisor; Weber, Hoffman.

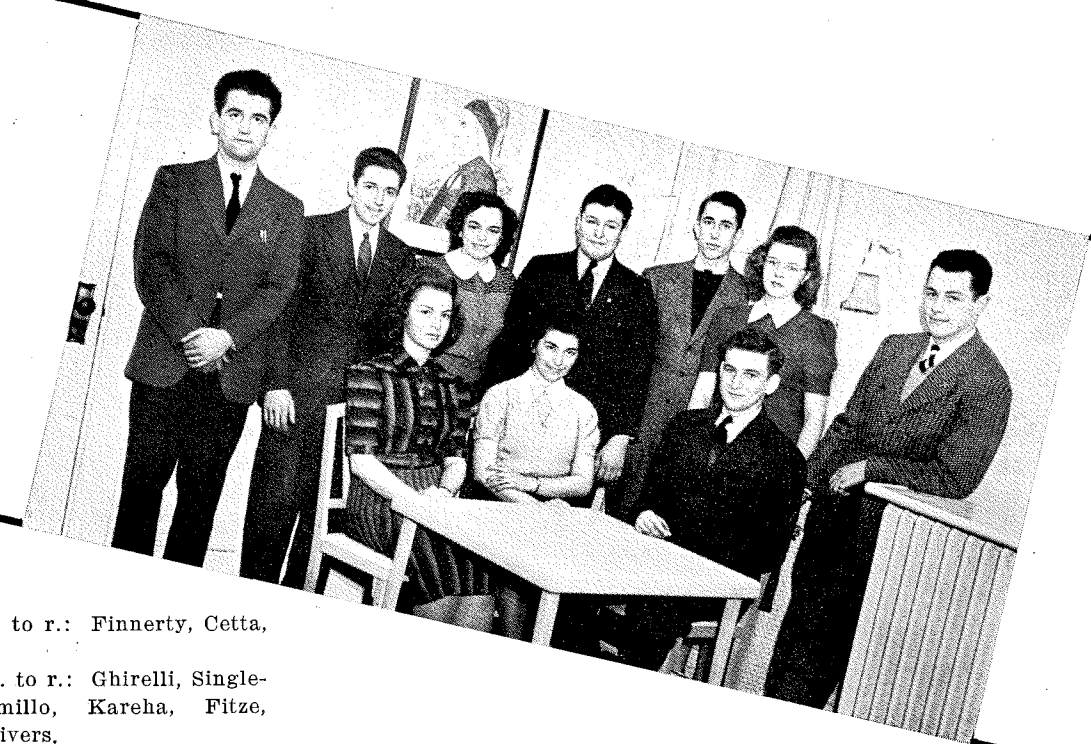
THE TRIBUNAL

*Both men and "rats" shiver and shake
At the terrible toil the Tribunal takes.*

TRIBUNAL! The magic name that sends fear to the hearts of more than one unknowing freshman. For it is a known fact that he who enters into the tribunal's chambers to be judged will invariably be found guilty. Naturally the uppermost thoughts of the terrible ten, and of the sophomores, is directed upon the comfort and well-being of the freshmen!

This year, the freshman rules were altered considerably. These revisions, however, did not prevent the Tribunal from inflicting just or unjust punishment upon the erring yearlings. Led by their able president and secretary, Marie Cetta, the Tribunal consisted of nine other members: Walter Singlevich, editor-in-chief of the freshman "Bible," Marie Finnerty, Florence Tomillo, Bernice Miller, Peter Ghirelli, Clarence Fitze, Nelson Chivers, and Nicholas Supron.

College hazing is a part of campus life not soon forgotten, and certainly the tribunal will ever be a vivid recollection to all Keystone graduates, for they are the most feared group on the campus.



1st row, l. to r.: Finnerty, Cetta, Supron.
2nd row, l. to r.: Ghirelli, Singlevich, Tomillo, Kareha, Fitze, Miller, Chivers.

RADIO CLUB

THE frequent, active meetings of the Radio Club were lulled and discontinued for a time by the death of its beloved adviser, Dean Sterling E. Hess. His illness caused his absence from a number of the meetings and thus the abandoning of some of the club's activities. With his death, an integral part of the club was removed.

In the beginning of the year, the headquarters on the fourth floor of Harris Hall was a busy, buzzing room as in every other year since the club has been organized. The members were doing one of many things: some were interested in contacting wave stations all over the world; some were intent on learning the morse code; and some wanted to study radio make-up, and try to construct parts and understand their functions. Everything was done so easily with the ever-helpful Mr. Hess supervising and instructing. It was interesting to listen to Mr. Hess, a licensed operator, contact and broadcast to other amateur radio station operators. Before war conditions, his excellent knowledge of languages, enabled him to broadcast to many of the foreign countries such as France, Germany, and Spain.

Today, Keystone radio students representing station WSTCS are continuing the work initiated four years ago by Mr. Hess. The hobby which Mr. Hess valued so highly is still a reality at Scranton-Keystone. Club officers are: John Moffat, president; Nicholas Supron, vice-president; and Florence Gillespie, secretary-treasurer.



Seated, l. to r.: Campbell, Moffatt, Supron.
Standing, l. to r.: Landis, Olevich, Coolbaugh, Gillespie, Pappson.

FRENCH CLUB

Le Cercle Francais de Keystone was organized last year at Scranton-Keystone, in order to help the student gain an appreciation of the French language, and at the same time develop an ability to speak and comprehend the language. There is a social atmosphere in addition to the conversation, which is entirely in French.

Two programs were presented during the time the club has been functioning. The first included several scenes from "Le Voyage de M. Perrichon," and several songs by French composers rendered by Miss Shirley Hallock of the Glee Club. The program closed with group singing of French folk songs.

This year, the first meeting was held at Sabiston Hall. Officers for the coming year were elected: President, George Cambell; vice-president, Adele Slocum; and publicity chairman, Bernice Brile. The main feature of the program was a dramatization of a few scenes from "Maitre Pathelin," by members of the advanced French class. A poem was later presented by Miss Barbara Burns. Refreshments were served to the group by the Home Economics Club.

The club is under the direction of Dr. Helen Garrett. The present officers are: President, Myron Kocher; Secretary, Barbara Burns.



1st row, l. to r.: Brewster, Thomas, Brile.
2nd row, l. to r.: N. Williams, Dr. Helen Garrett (advisor), Kocher.
3rd row, l. to r.: Endelman, Campbell, Brandwene, Slocum, Powell.

KAPPA BETA SIGMA

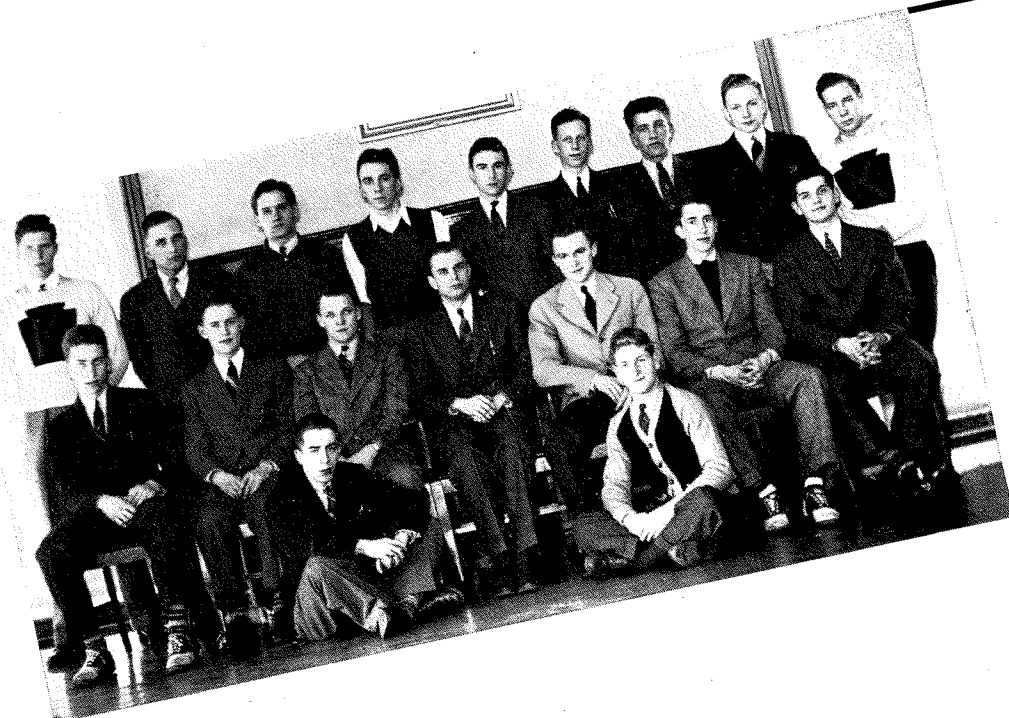
THE Keystone Business Society was formed in 1940 to promote fellowship among the students enrolled in business administration courses. This organization has contributed much to the social and athletic life of the school.

The club was active in athletics, placing teams in the basketball and baseball intramural leagues.

Members of the group went to New York City during spring vacation and visited such places as the New York *Times*, Hotel New Yorker, Stock Exchange, Chase National Bank, Federal Reserve Bank, National Biscuit Company, Sheffield Dairy Company, La Guardia Airport, Queensborough Housing Project, and many other places of interest.

In May, the club sponsored its annual novelty dance. This year the theme was a sport dance which proved exceedingly successful.

The club's successful year has been due to the considerate and helpful advice of Professor Norton Beach, faculty advisor, and the officers: Walter Tench, president; Clarence Fitze, vice-president; William Fahringer, treasurer; Carl Swindlehurst, secretary.



KAPPA SIGMA CHI

IN ITS second year of growth, the Keystone Science Society has continued to thrive as one of the outstanding organizations on the campus. In a recent poll conducted among students, it placed third as the most helpful activity at Keystone.

The purpose of the group is to attract the interest of outstanding students in various fields of science; and then at the monthly meetings, problems are discussed which show how closely related all the sciences are. The Science Society is composed of approximately forty students.

Among the highlights of the programs presented this year by the society were the "Science Forum" and the "Chemistry Show" which attracted over 150 people.

The group was represented by its president at a recent convention in Coatesville, Pennsylvania, where an attempt is being made to affiliate all junior college scientific societies with either the Pennsylvania Academy of Science or the American Association for the Advancement of Science.

Officers are: president, Walter Singlevich; vice-president, Marie Papson; secretary, Ruth Olevich; treasurer, Eugene Hawley; and librarian, Bernard Endelman.



GLEE CLUB

DURING the past year, singing has become one of the most popular extra-curricular activities. The Glee Club, under the capable and inspiring direction of Miss Anabel Zimmerman, has attracted a large number of students interested in both modern and classical music.

This group is one of the most worth-while organizations in the college as indicated by their participation in the various school gatherings. In addition to singing at the monthly Convocation Services at the Factoryville Baptist Church, a number of the members took part in the May Day celebration.

The success of the club has been largely due to the spirit and ability of its president, Jack Wilcox; its student-director, Myron Kocher; its secretary, Lois Gardner; and its librarian, Mary Williams.



1st row, l. to r.: Barnes, Graham, Jiminez, P a p s o n, Coolbaugh, Magor, Rivenburg, Sailer.
2nd row, l. to r.: Orlowski, Schwartz, V. Hoffman, Kocher, Wilcox, Gardner, M. Williams.
3rd row, l. to r.: Wolfe, Olevich, Llewellyn, Parise, Dean, Huber, Steckbeck, N. Williams, Tetlock, Bruning, Miss Anabel Zimmerman, director.

MASQUE AND HARLEQUIN

THE Masque and Harlequin Club, under the direction of Dean Lucile M. Scheuer, has completed a successful season.

Three one-act plays were presented in December. The success of these plays was due not only to the fine performances of the members of the cast, but also to the various committee members who helped with properties, stage, lighting, make-up, costumes, and publicity.

The comedy, "Ring in the Groom," was presented by Barbara Brewster, Betty Jane Floyd, Florence Gillespie, Josephine Golden, Sydney Rivenburg, George Campbell, and P. J. McDonough. "Show Up," a stirring drama, was enacted by Barbara Burns, Dorothy Walter, Clarence Fitze, and Phil Jankus; and the cast of the farce, "Goodnight Caroline," consisted of Robert Huber, Evelyn Sailer, Adele Slocum, and Fred Willets.

Officers are: Evelyn Sailer, president; George Campbell, Jr., vice-president; and Vera Hoffman, secretary-treasurer.



RIDING CLUB

ALTHOUGH many Keystone students went horseback riding last year, the club itself was not organized until this fall. After classes were under way in September, Samuel A. Lee, Director of Physical Education, contacted a group of students who were eager to ride. Some of these would-be equestrians wished to learn the art of "sticking to the saddle," while the more experienced riders wanted to be included because of the enjoyment derived from the sport.

Unlike most clubs, the riding club has no fancy name and no officers. Mr. Lee is in charge of the group and makes all necessary arrangements before it leaves the campus.

The coming of spring and warmer weather finds smartly outfitted Keystonians piling into the station wagon on almost any Tuesday, Wednesday, or Thursday afternoon, on their way to Goodwin's Dude Ranch and an hour of fun and pleasure.



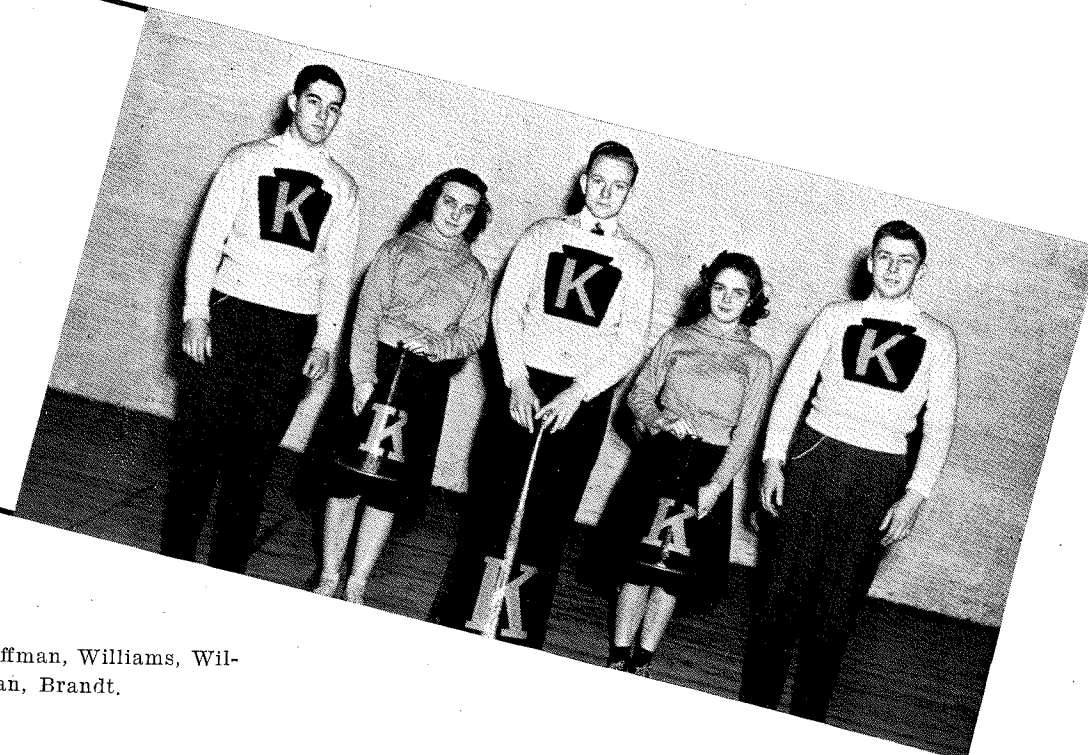
1st row, l. to r.: Llewellyn, Edwards, Howe, Dunn, Wydeen, Horvitch, Gutheinz.
2nd row, l. to r.: Tuck, Schwartz, Sailer, Golden, Lipman, Shulman, Miller, M. Williams, Jarman, S. A. Lee, Director of Physical Education.

CHEERLEADERS

NOWHERE can you find more loyal citizens than the Keystone cheerleaders, for they voluntarily sacrifice their time in order that the "Little Giants" might realize that the students are behind them, win or lose.

Each Saturday that the Keystone warriors are fighting on the football field, these ardent Keystone rooters may be found cheering lustily for the boys who are trying to bring victory to the school. Whenever a rousing cheer re-echos among the wooded hills, a strange happy thrill surrounds the hearts of our heroes. One thought surges through their minds, "Our friends are with us; we must not fail them."

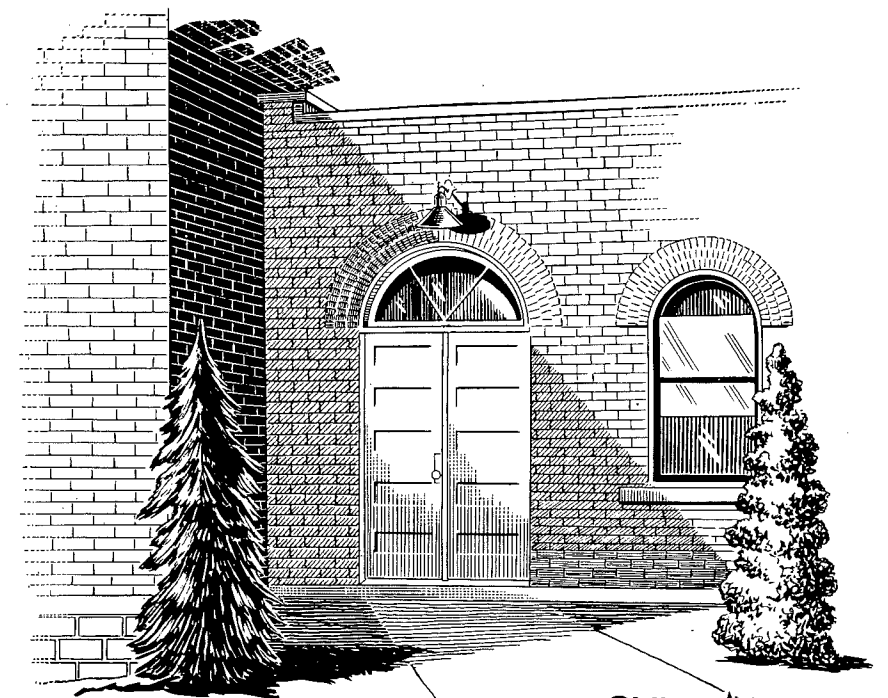
The student body owes a rousing cheer to those cheerleaders for the 1940 fall season. They were: Myrtle Jarman, Mary Williams, Jack Wilcox, Edward Brandt, and Robert Coffman.



l. to r., Coffman, Williams, Wilcox, Jarman, Brandt.

Athletics

Hand in hand with the growth of our minds and souls has gone the training of our physical bodies...joy for the joy of playing...dealing fairly with our opponents...playing hard till the game is over... We have had at one time or another the thrill of hard-earned victory, or the loss of defeat... We have learned teamwork...



GYMNASIUM



1st row, l. to r., Seamans, Belensky, Mills, Connery, LaFontaine, Sandone, Hoffman, Kappral.
 2nd row, l. to r., Zangardi, manager; Dunn, Steckbeck, Smith, Shulman, Bloxham, Schwasta, Belardi, Conrad, Ghirelli, manager.
 3rd row, l. to r., S. A. Lee, Director of Physical Education; Pallman, Briggs, Lewis, Maholchic, Rode, Lash, Kolb, Goodwin, Walker, Geo. Azar, Jr., Coach.

Football---Score: Low. Morale: High

JUDGING by the number of points amassed, the 1940 football campaign proved disastrous to last fall's edition of the "Little Giants." And small wonder. For with the addition of Pennington to the schedule and the resuming of relations with Williamsport-Dickinson Jr. College and Alfred University, the six game schedule of the past season included some of the most formidable opposition that the Keystoneians have had to tackle in several years. But tackle it they did, albeit on a few occasions not so successfully, with the result of one win, one tie and four losses.

Practice sessions began on September 11 and with a mere handful of returning lettermen to form a nucleus, Coach George Azar commenced the difficult task of molding a formidable organization. In doing a bit of research we found that the banner day of the practice sessions saw only 22 candidates on the field; a typical illustration of the many problems which confronted the head mentor. Had not the usual handicaps of lack of reserves, injuries and illnesses

Football---Score: Low. Morale: High---continued

plagued the squad throughout the season, no doubt it could have been highly successful, for after careful handling by the coach several steller players were developed from the material.

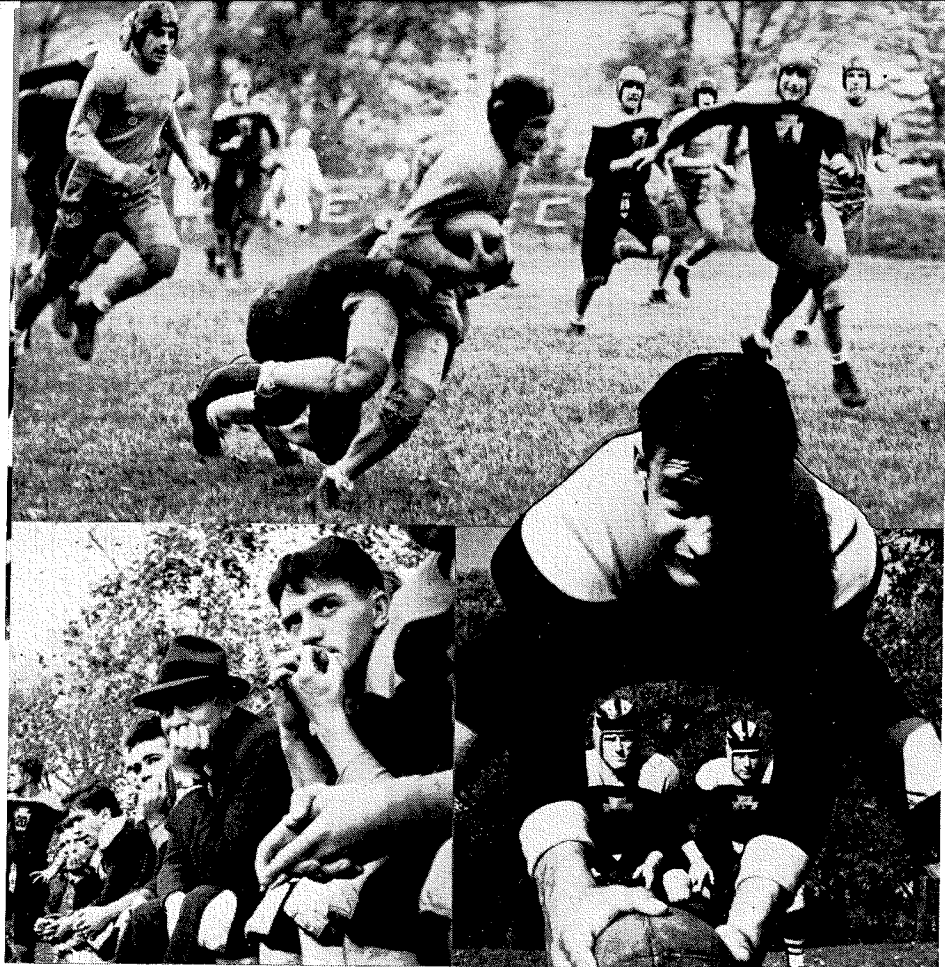
Few lines, however, are capable of withstanding a terrific 60 minute onslaught with no rest; and sufficient substitutes were not to be had.

Such were the problems. To judge from another standpoint, however, the season did prove a tremendous success; for under the guidance of Coaches Azar and Lee, the highest qualities that any team can possess were fully developed in the Orange and Blue squad—those qualities of true sportsmanship and love of the game itself. Also, out of the problems grew a discussion of athletic policy from which may evolve the solution to bigger and better teams.

At the close of the season Sid Goodwin and Earl Walker were elected honorary co-captains for the season—a fitting tribute to their sportsmanship and playing abilities. Last, but certainly not least, were the services of the managers headed by Peter Ghirelli. Their efficient and loyal work was a prime factor in the functioning of the team throughout the season.

l. to r., Samuel A. Lee, George Azar, Jr., Doris Smith, and Norton Beach.





On the

*Pennington Prep 21
Keystone 9*

The "Little Giants" started the season, and the first quarter of this colorful contest, with a bang. To Harry Kolb went the honor of registering the first tally of the season when he tackled Darcy behind his own goal line for a safety and a 2-point lead. Then successive line bucks soon brought the ball back into scoring territory and Maholchic plunged over for six more points. Lewis converted to end the quarter with Keystone leading 9-0. In the second quarter, Cunningham, the sparker for the Red and Black throughout the con-

test, lead his teammates in tallying 13 points. This quarter also saw the first injuries of the season when Maholchic, Earl Walker and Bill O'Malley were hurt and consequently were forced to take to the bench. Following their exit from the field, the Keystoneians, who had heretofore exhibited a strong running offensive, were soon weakened in the onslaught and, come the end of the game, Pennington was triumphant. Thus went the first game and the first defeat of the season.

Syracuse Frosh B 15--Keystone 6

With more experience and somewhat inspired by the large Recognition Day crowd, the wearers of the Orange and Blue took to the field for their second encounter quite confident that they could repeat the victory of the previous season. Outweighed both in the line and in the backfield, and weakened by the loss of several varsity regulars, the Azarmen reverted to an aerial offensive which proved highly effective until the second half. 29 passes were attempted on which 149 yards were gained against the enemies attempted 6 which netted only 20 stripes. Syracuse scored first, but soon after Bob Hoffman recovered a fumble which called for a pass from Maholchic to Goodwin, netting Keystone's only 6 points. As the game ended, the "Little Giants" were making a desperate bid for a touchdown through successive passes from Maholchic to Goodwin and LaFontaine. The Syracuse defense, however, was rigid and the game ended with our boy's in possession of the ball on our own 45-yard line. The lack of substitutes was quite conspicuous in this game, as evidenced by a column appearing in the Keystoneian which lamented, "if only some of our lads could have a rest midway in each quarter."

Gridiron!

Dickinson Jr. College 7--Keystone 7

It was a crippled and somewhat disheartened team that made the trip to Williamsport, for they were minus the services of Frank Maholchic, triple-threat halfback, Jim Lewis, varsity tackle and "Duke" Briggs another lineman. In this first off-campus contest, "Little Giants" proved no misnomer. For the fighting instinct was truly aroused and the squad showed more spirit and determination than had been seen in many a year in this vicinity. The host team scored in the first few minutes of the fracas which seemed to bring new life into the Keystoneians. With Earl Walker doing the passing and Goodwin and LaFontaine the receiving, the pigskin was brought to the enemies eight and then, in a sudden change of strategy, Goodwin broke loose to cross the goal line. Kappal's neat placement tied the score 7-7. When the final whistle concluded that hectic game, the experts present remarked that a combination of unexcelled courage plus a sparkling aerial attack proved to be the defense that prevented the scheduled "blitzkrieg."

Alfred University Frosh 0--Keystone 6

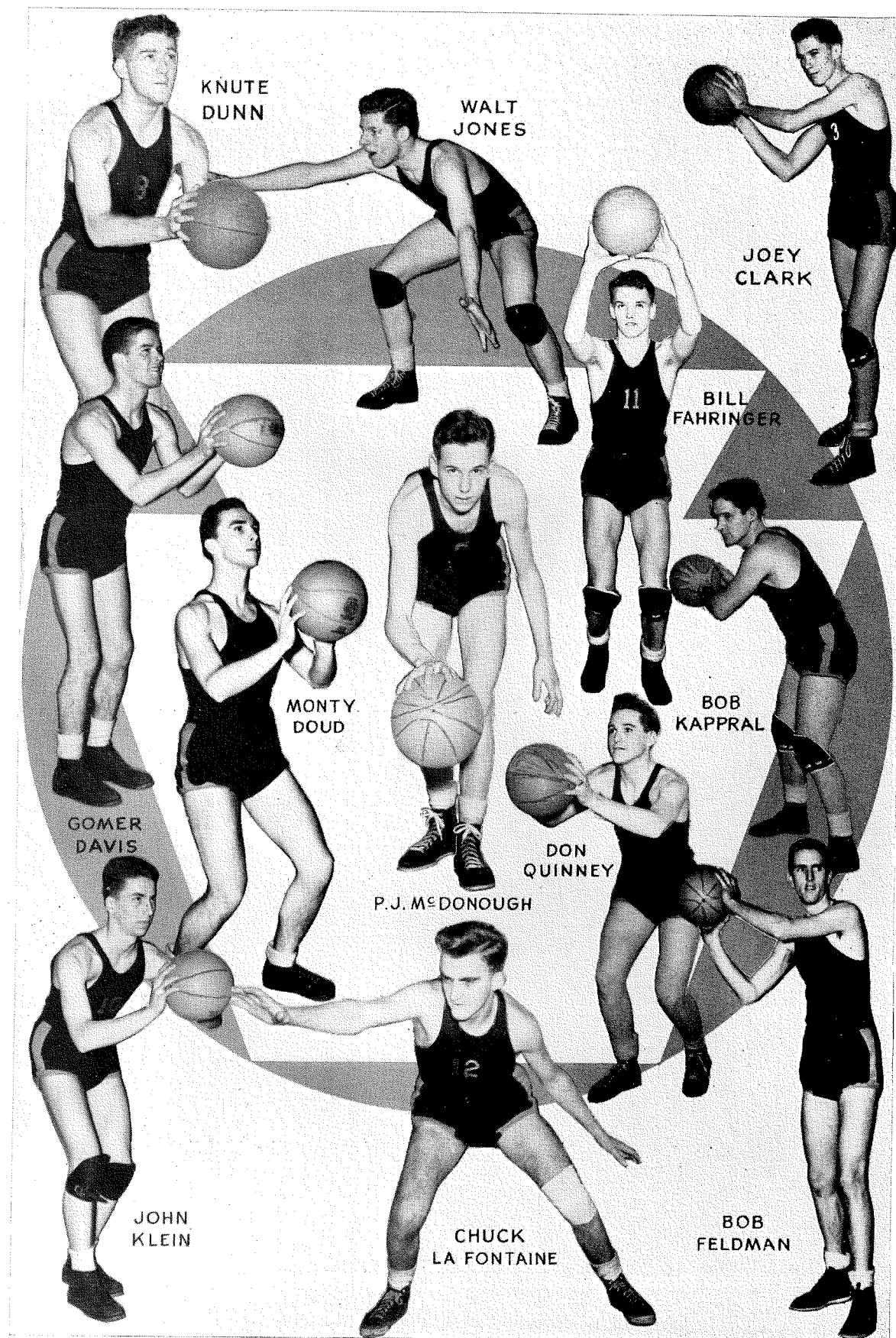
The only nocturnal contest of the season found Keystone in top form with the result—the only win of the season. The score was made after an eighty-yard sustained drive in which our lads showed splendid coordination. "Babe" Schwasta plunged the ball over from the one-yard line for the six points but the attempt at conversion failed. The "Little Giants" were never seriously challenged after this marker and the game lacked color with both squads resorting to a kicking duel. Frank Maholchic, the toe artist for the Orange and Blue, did a superb job. The game was played under terrific weather conditions, the temperature being down in the twenties. Coach Azar remarked that the water even froze in the drinking cups.

Wyoming Seminary 25--Keystone 0

They say that Old Man Jinx has had a seat on Keystone's bench in every Sem contest since 1886. We aren't the ones to deny it. In fact, we think we saw him there last November 2; he was just sittin' there quiet-like and peaceable, but still jinxin' as strong as ever. And that's the story in a nutshell. Try as hard as they might, the Keystoneians couldn't get the ball into playing territory and with the muddy condition of the Kingston field preventing an efficient passing attack the Sem lads had the game settled by the third quarter. Belensky, Seamans, Schulman, Sandone and Goodwin played an outstanding game this day but all for naught. Why doesn't that little man go away?

Bucknell University Frosh 26--Keystone 7

The final contest of the 1940 season was one of the highlights of the annual Homecoming Day and the bleachers were packed to capacity with the "past sons of the Nokomis." While the Lewisburg eleven was highly rated and conceded the edge from the start, the Keystoneians were out to make a definite impression in this last struggle and this they did. However the power plays of the Baby Bisons proved too great and the Azarmen succumbed after a last valiant effort. Six varsity men gave their last performance in this contest for the Orange and Blue. They were: Jimmy Lewis, tackle; Frank Maholchic, back; Nick Sandone, back; Warren Conrad, guard; Bruce Bloxham, guard; and Bill O'Malley, tackle.



The Basketball Season

THE court season of 1940-41 was ushered in with the annual Alumni encounter, in which, this time, the somewhat aged former Keystone's couldn't cope with the "Little Giants" who walked off with the game by a 53-30 score. This was the beginning of the so-called court "Renaissance" at Keystone, after the disastrous winless season of last year.

The next day the team journeyed to Cornell to oppose a much larger squad and they were defeated by the score of 37-23.

In the third game, Keystone played Williamsport Dickinson Junior, their first court clash in a number of years. The Keystone team came out on the long end of the score, 43-37.

In the fourth game of the season the Keystone boys invaded the "Chocolate Town" of Hershey. This contest was bitterly fought all the way with the Keystone boys finally winning in the last 45 seconds of play by a field goal by "Wild Bill" Fahringer. The final score: 38-37.

Three days later the boys went to Selinsgrove to meet a Susquehanna University five where we met a disastrous defeat by a score of 52-20. An interesting high light of the trip was a slight conflagration in the station wagon, with state troopers interestedly watching the boys' efforts at putting it out.

The team then returned to the home floor to encounter their arch foe, Wyoming Seminary. After an exciting first half the Seminary squad turned on the heat and out-scored the Keystone team, finally winning the game by a score of 43-49.

The "Little Giants" then traveled into New Jersey to play the Pennington School, at Pennington. After a very hard fought battle, with Keystone leading all the way the Pennington School finally forged ahead to nose out our team by two points, 32-30.

The next week the Scranton University Frosh appeared on our home court and overpowered Keystone, 47-30.

When Bucknell Junior College came here, the boys were out for revenge but they failed to achieve it against the Luzerne County sharp shooters. The game ended with the score at 29-54.

The next night the boys traveled to Lewisburg to encounter the Bucknell Freshmen and again come out second best, 21-40.

In a return match, Hershey turned the tables this time, taking the "Kiminutive Giants" over the ropes by the score of 32-46.

The Keystone aggregation finally got their revenge against the Bucknell University Freshmen. This was a hard fought battle all the way through, and after the final whistle blew the score stood 25-23 with the "Little Giants" in the lead.

The next game and return game with the East Stroudsburg Frosh the "Little Giants" came out of the struggle ahead. This game was one of the hardest fought for the two teams were about evenly matched. The score was 38-26.

The next week the boys went to Williamsport to encounter Dickinson Junior College. This was a defeat for the boys again. The score was 26-56.

After battling through a blizzard and getting in at five o'clock in the morning the boys beat Morris Junior the next night by the high score of 54-35. Bob Kappral was high scorer with 23 points.

The last game of the season was with Wyoming Seminary. The first half ended with Seminary in the lead by 16 points. In the next half the Keystone boys went back in and closed the score up to within four points and so the final score was 47-51 with Keystone on the smaller end.

The Wrestling Season

THE 1940-41 wrestling team, coached by George "Turk" Azar and captained by Bruce Bloxham, turned out to be one of the best teams in Keystone's history despite its record of three losses and no wins. A look beneath the scores immediately shows that it was a "hard luck" team.

At Cornell, two matches were forfeited for a loss of ten points because two of our boys were unable to attend. Despite this setback, however, the "Little Giants" lost by only two points, 18-16, taking four of the remaining six matches from a very powerful team.

At the University of Pennsylvania, the wearers of the Orange and Blue were defeated 22-8 by a thoroughly experienced team which had not been defeated in the last three years. At Gettysburg, a queer quirk of fate turned the hard luck on again when Jim Lewis, leading in the point basis to this moment, was pinned by a "freak" hold in the closing seconds of the match costing Keystone another defeat. Four other matches, originally scheduled with the Y. M. C. A. and Wyoming Seminary were canceled; two because of injuries and two because of bad weather.

The highlight of the season was Captain Bloxham's undefeated streak which gave him the unequalled record of a three-year string of victories without a single defeat.

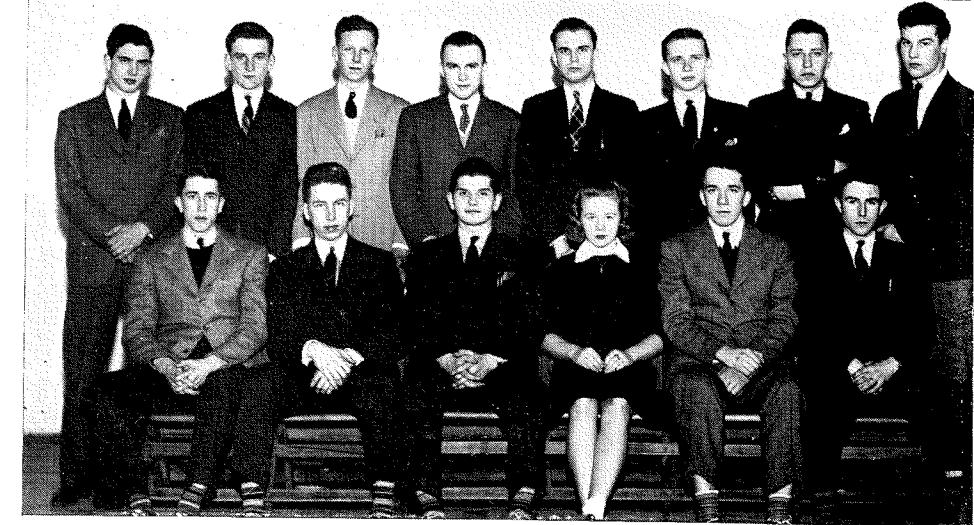
Following is a list of the men who composed the team and the weights at which they wrestled:

121	George Koerner
142	Nick Sandone, R. A. Jones
145	Bruce Bloxham
155	Gene Hawley, Alvin Wilensky
165	Warren Conrad
175	Sid Goodwin
Unlimited	Jim Lewis

Managers—George W. Campbell, Jr., Bernard Endelman.



1st row, 1 to r., Koerner, Van Vliet, Sandone, Bloxham, Wilensky, Seamans.
2nd row, 1. to r., Campbell, manager; George Azar, Jr., coach, and Bernard Endelman, manager.



1st row, 1. to r., Fitze, Klein, Wilensky, Rivenburg, Huber, Olsen.
2nd row, 1. to r., R. Hoffman, Supron, McDonough, Tench, Norton Beach, Coach, Van-Blarigan, Valentine, Norris.

The Tennis Season

UNDER the careful supervision of the tennis coach, Norton Beach, who booked the largest tennis schedule Keystone ever played, the Keystone racquet squad developed smoothly. Being favored with excellent weather for practice as well as for matches, the team met opponents ranging from preparatory schools to universities.

The team was composed of two experienced men and five newcomers: P. J. McDonough, Walter Tench, Ben Shulman, Clarence Fitze, Joe Mayers, Bob Huber, Ed Olsen, and manager, Nicholas Supron. Of these, Tench, Fitze and Huber will be graduated in June.

The season's record:

Wyomissing Polytechnic Institute, 4; Keystone. 3
Keystone, 5; Bucknell Junior College 2.
Wyoming Seminary, 5; Keystone, 2.
Keystone, 6; Bucknell Junior College, 0.
Cornell Frosh, 9; Keystone, 0.
Keystone, 5; Wyoming Seminary, 4.
Schedule unplayed at press time:
Susquehanna University.
Blair Academy.

The Baseball Season

ONLY half way through one of the heaviest and most difficult schedules of recent years at the time this publication went to press, the 1941 Keystone baseball squad was seemingly headed towards the best record to be made by a Keystone nine in some time. Deserving of early mention is the fact that the "Little Giants" conquered a Seminary aggregation for the first time in years. A great deal of credit for the success of this season's team must go to Sam Lee for he did an excellent piece of work in organizing a winning combination from a group of which not more than six fellows had had previous scholastic baseball experience. Much, too, must go to every individual on the squad for the fine spirit, enthusiasm, determination and willingness which they displayed throughout the practice sessions and games.

Let's take a look at statistics: The first contest took place on April 16 with Bucknell Jr. College at Wilkes-Barre. Not functioning smoothly enough because of too few practices, the Orange and Blue were forced to accept a 7-5 decision. Belardi and Gerhardt led our lads at the bat, each contributing two hits apiece; the pitching section, however, was not quite ready yet. The loss proved to good advantage in showing up the raw edges in the Keystone squad and a week of concentrated practice primed the team for their next engagement, this time with the most formidable Susquehanna University nine. The Selinsgroviens, widely known for the high quality of their diamond performers, blanked our lads 6-0, a score which definitely showed that we had the makings of a fine organization when one considers the fact that the down valley team conquered the Bucknell University varsity 11-1 the next week using their second string pitcher! Inspired and now experienced, the Leemen met the highly rated Seminary nine four days later and nosed them out 3-2 for the first victory not only of the season, but also of several years over the arch-rival. Walt Shimer, in excellent hurling form on this occasion, limited the Sem squad to 3 hits while Belardi and Sandone connected safely to lead the scoring. On the third of May, the Orange and Blue entertained Bucknell Jr. on the Factoryville Field, and in an explosive sixth inning, the "Little Giants" registered six tallies to finally rout the Bucknellians 11-7. Pat Walsh controlled affairs from his mound position while Belardi again led the hitting barrage with a double and two singles in five trips to the plate. An unusual accident marred the game when Nick Sandone, lively second baseman, collided with a Bucknell infielder who was running down a pop-fly, and was knocked unconscious.

So, as we go to press, the Leemen are in there fighting as they never fought before. Win or lose, a successful season for 1941.



WOMEN'S ATHLETICS HOCKEY

THE 1941 hockey season under the supervision of Miss Doris (Pudge) Smith was not considered unsuccessful. The perseverance and sportsmanship of the team overshadowed their losses. With only six girls remaining from last year's team, Miss Smith soon turned out a fast-running, determined squad. Evelyn Baer was named captain for the 1940 season. The teams on the hockey schedule were: Clarks Summit, Wyoming Seminary, and Wilkes-Barre Day School. Marjorie Heebner was manager, and was assisted by Dorothy Walter and Catherine Barnes. Janet Seamans has been selected as manager for the 1941 hockey season.

The sophomore players were: Evelyn Baer, Barbara Betelak, Marion Capwell, Marie Cetta, Romaine Finn, Marie Finnerty, Lois Gardner, Frieda Gutheinz, Rita Maholchic, Bernice Miller, Betty Parise, Vera Tetlock, Florence Tomillo, and Claire Wydeen.

The freshmen players were: Bernice Brile, Dorothea Deichmiller, Myrtle Jarman, Grace Johler, Jane Sunday, Edna May Powell, Sydney Rivenburg.

1st row, l. to r., Wagner, Sunday, Wydeen, Rivenburg, Miller, Deichmiller.

2nd row, l. to r., Capwell, Jarman, Finn, Parise, Finnerty, Maholchic, Bartels, Gardner.

3rd row, l. to r., Doris Smith, coach; Barnes, manager; Cetta, Powell, Williams, Brile, Betelak, Johler, Tetlock, Gutheinz, Tomillo, Walter and Seamans, managers.





1st row, l. to r., Schwartz and Jarman, managers, Weber, Brewster, Hinkley, Wagner, Gardner, Deichmiller, Wydeen, Robinson and Golden, managers.

2nd row, l. to r., Doris Smith, coach; Sailer, Finn, Johnson, Rivenburg, Powell, Brile, Jöhler, Parise, Sunday, Payne, managers.

Girls' Basketball

A SECOND victorious season for the Girls' Basketball team . . . Coach Doris Smith formed from her remaining members of last year's squad, Hinkley, Wagner, Gardner, Wydeen and Finn, and capable freshmen, a team that not only was undefeated but also had no tie games. Their opponents soon found that they were contending with a group trained in the technical skills and drilled in cooperation—an unbeatable combination.

With each succeeding competitor, Wilkes-Barre, Wyoming Seminary, Moscow, East Stroudsburg and Technical, bowing to this powerful squad, its superiority was acknowledged. The co-captains for the season, Wagner and Gardner, led their fellow players on.

With several freshmen members remaining for the season next year, and with the coaching of Miss Smith, Keystone can expect a third glorious season.

Girls' Basketball---continued

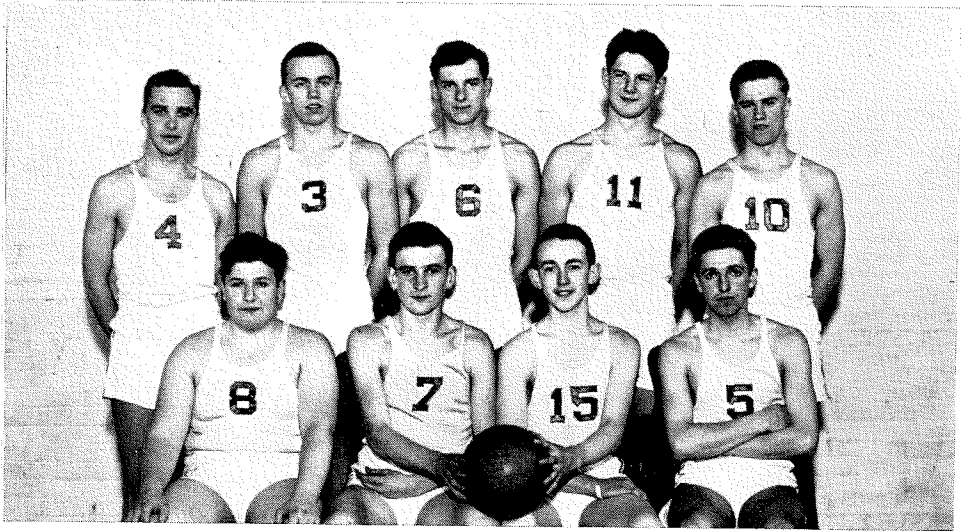
Team highlights as reported in the *Keystonian* . . .

"Sextet Takes 39-41 Opener with Wilkes-Barre Day School" . . . "Keystone's feminine basketeers rode over a Wyoming Seminary sextet Friday afternoon at Kingston, piling up a score of 39 to 16 for their sixth straight victory in as many starts. Lithe Peg Hinkley was the standout performer, dropping in 19 points, while Lois Gardner and "Dikey" Deichmiller scored 10 to 8 markers respectively. Ev Sailer, one of Pudge's glamorous subs, sank a field goal, bringing the score up to 39. On the defensive, Keystonettes Wagner, Weber, and Slocum shone. Subs Bee Brewster and Syd Rivenburg played a good brand of ball" . . . "By virtue of administering a decisive drubbing, 48-16, to the Morris Junior College sextet, the Keystone girls' basketball team triumphantly concluded a two year undefeated streak at the annual Fathers' Night. Peg Hinkley, stellar forward, paced the squad, accounting for 26 of the points, while Lois Gardner garnered 14 of the markers. The game was a flashing finish to a sparkling season in which the sextet was victorious in all of their 12 games, bringing their total list of successive victories to 18. This record makes them one of the greatest teams in Keystone's athletic history."



Co-captains . . .
Lois Gardner and Wanda
Wagner.

INTRAMURAL



1st row, l. to r., Kareha, Sup-
ron, Koerner, Singlevich.
2nd row, l. to r., Doud, Chipak,
Herron, Kolb, Butchko.

MEN'S BASKETBALL

THIS year, intra-mural basketball was managed on an entirely different basis. Sam Lee appointed Edwin Kareha Director of Intra-Mural Sports, and with the full cooperation of all students, the finest intra-mural year was run off. Six teams were entered, with the Science Club, runners up last year, taking the league title this year. To the players engaged it was more than winning or losing a game: one team would be fighting to be the best defensive team, another to have the least personal fouls against them, or it was a battle for highest individual score.

FINAL LEAGUE STANDING

Team	Won	Lost
Science Club	5	0
Sophomore Engineers	4	1
Kappa Beta Sigma	3	2
Freshmen Engineers	1	4
Dorm	1	4
Independents	1	4

HIGH SCORERS

Name	Team	Games	Goals	Fouls	Points
Shimer.....	Sophomore Engineers.....	4	19	6	44
Chipak.....	Science Club	5	20	4	44
Olsen.....	Kappa Beta Sigma.....	4	15	2	32
Belardi.....	Freshman Engineers	5	11	7	29
Kolb.....	Science Club	5	10	7	27
Senkowsky.....	Freshman Engineers	5	12	2	26
Herron.....	Science Club	5	9	4	22
Swindlehurst.....	Kappa Beta Sigma.....	5	10	1	21
LaFontaine.....	Sophomore Engineers	4	8	3	19

ALL STAR TEAM

Position	Name	Team
Right Forward	Chipak	Science Club
Left Forward	Shimer	Sophomore Engineers
Center	Herron	Science Club
Left Guard	Goodwin	Kappa Beta Sigma
Right Guard	La Fontaine	Sophomore Engineers

ATHLETICS

WOMEN'S BASKETBALL

SPARKED by Kay Shumaker, the secretarial basketeers succeeded in copping the 1941 Orange and Blue basketball trophy by virtue of their victory over the Orange and Blue, women's athletic organization, in the final game of the women's intra-mural tournament.

The five groups that participated in the tournament were: Boarders, Medical Secretaries, K. W. O., Secretaries, and the Orange and Blue.

Kay Shumaker, of the secretaries, with thirty-five points, emerged as high scorer of the tournament. Gwendolyn Leath, also of the secretaries, was second in scoring with twenty-four points; Bernice Miller of the Orange and Blue came in third with a total of fourteen markers.

Dorothea Deichmiller, secretarial manager, used the following lineup in all of the games: Forwards: Kay Shumaker, Gwendolyn Leath, Annette Dziama; Guards: Marion Aitken, Barbara Betelak, and Geraldine Brandt.

The intra-mural games are sponsored each year by the Orange and Blue in order to give non-varsity women the opportunity to participate in spectator sports.

Triviata

Impressions imbedded upon our memories
... friendly trees ... Nokomis ... football
games ... classmates ... tobacco smoke
swirling in the common lounge ... the
thud of ball against backboard ... dances
... cuts ... cafeteria conversations ...
clubs ... friendships with teachers ...
research in library ... all the constant
everyday associations ...

41

Orange and Blue
"Sloppy Joe" Party

The KEYSTONIAN

Publication of Scranton-Keystone Junior College

Business Men to
Visit New York

Keystone Given Grant
By Education Board

\$9,000 Will Be Used to Pursue Special Studies Utilizing Community Committees—Coordinator Appointed

Annual Homecoming Day
Scheduled For Saturday

FASHIONS

Hockey Lassies, "Little Giants"
Clash With Rivals—Dance,
Reception Afterward

No More Knee-high Socks!
Ditto the Long Tresses

Students Name Likes and Dislikes in Poll—Majority of Voters
Favor Comfort Over Appearance

FRESHMAN THOUGHTS

By Jeanne Howe

Science Society
"Extravaganza"
Offered Tonight

Landis, Telep Head Committee;
Surprise Features

Blake Tewksbury Named
New Keystone Registrar

Wilbur L. Williams to Do Graduate Work at Harvard—New
Registrar Assumes Duties

The Individual Speaks

By Nancy Williams

Students to Sing
Christmas Carols

MEDICAL SECRETARIES
HOLD SUPPER MEETING

The Fifth Column

BY THE WAY with Papson

Annual Recognition Day
To Be Observed Saturday

Venerable Sam Lilly
To Begin 51st Year Here

Familiar Campus Patriarch Not Student, Prof, But Priceless
Fixture—Will Be 75, Sept. 23

Azarmen Defeat Alfred
For Initial Win, 6-0

Night Contest Played in Freezing
Temperature—Schwasta
Scores

"Little Giants" to Meet Syracuse—Chamber of Commerce
Sponsoring Affair

Willkie Elected
..... At Keystone!

A recent presidential poll conducted at the Convocation Assembly on October 24th indicated that 68% of the students at Scranton-Keystone Junior College were Willkie supporters while 28% favored Roosevelt and the remaining 4% were for Norman Thomas. The actual statistics were as follows:
Wendell L. Willkie 125
Franklin D. Roosevelt 39
Norman Thomas 8
190

Miss Garrett Named
Language Instructor

Swarthmore Graduate Spent
Year in France—Is Candidate
for Doctorate

GIRLS' SPORTS

Florence L. Gillespie
Heads '41 Nokomian

Wilensky Named Business Manager of Yearbook—Olevich,
Endelman, Campbell Complete Staff

FROM
the
BENCH

Platter Chatter

By Grudis

Memory Lane ...

Costa Rican Student
Relates Experiences

"Lily" Becomes "Jimmy" in the College Classroom—First Snowfall is Eagerly Awaited by Miss Jimenez

Dick Messner Is
Prom Band Choice

Name Band to Play at Keystone
Prom for First Time
TICKETS NOW ON SALE

James S. Smith Elected
Sophomore Class Prexy

Finnerty, Tench, and Gillespie
Also Named to Offices

Parents' Reception
This Friday Night

Hollinshead to Speak—Dance
For Students in the
Gymnasium

Dramatic Society
To Present Plays

Sadie Hawkins' Day Again Scheduled;
Keystone "Gals" Will Vie For "Guys"

"Keep College Men
Out of Draft"—Sophs

Favor Lend-lease Bill, CAA Recent
Poll Reveals

College Newspaper
Editors, Advisor to
Attend Convention

Endelman, Campbell, Spalding
To Take Part in CSPA
Convention

Keystone Athletes
Feted Friday Eve

Ossie Solem, Principal Speaker
At Athletic Banquet

Patriotic Ball
Friday Evening

All-NEP Quintet
Chosen by Coaches

Joe Clarke, "Little Giant" Pivot
man, Makes Second
Team

Coke 'n Smoke Shoppe
Proves Popular Place

Frosh McDonough Overthrows Tradition—Garners Presidency of
Cafe Society—Post Formerly for Sophisticated Sophs

Thanksgiving Date Change
Interpreted by Endelman

Keystone Co-Editor Cites Reason Why "Thanksgiving" Has
Been Added to Calendar
By Bernard Endelman

Sailer, Gardner
Plan KWO Dance

Committees Announced For
"Under the Big Top"
Affair

CHIPS

By F. L. G.

Bloxham, Grappler, Hits
15 Straight For Record

Piles Up Seventy Points to Opposition's Eleven in three Years
Of Competition



$a^2+b^2=c^2$... slide rules ... surveying ... chem ...





Cake making (good and bad) ... bundles for Britain ...
 "gotta scissors?" ... Sabiston inmates ...



A Drop of Ink
 May Make a Million People Think

PRINTING

—AND—

PHOTO OFF-SET REPRODUCTION

Both straight commercial printing
 and direct mail advertising printing

PRINTERS OF YEAR BOOK

LET'S TALK IT OVER

S. A. CAHOON & SON

Printing—Engraving—Binding

PHONE 3-1412

314 ADAMS AVENUE

SCRANTON, PENNSYLVANIA