

MILLER LIBRARY, KEYSTONE COLLEGE



3 2351 00060470 1

NOKOMIAN  
1940

Published by the Class of 1940

at

Scranton-Keystone  
Junior College

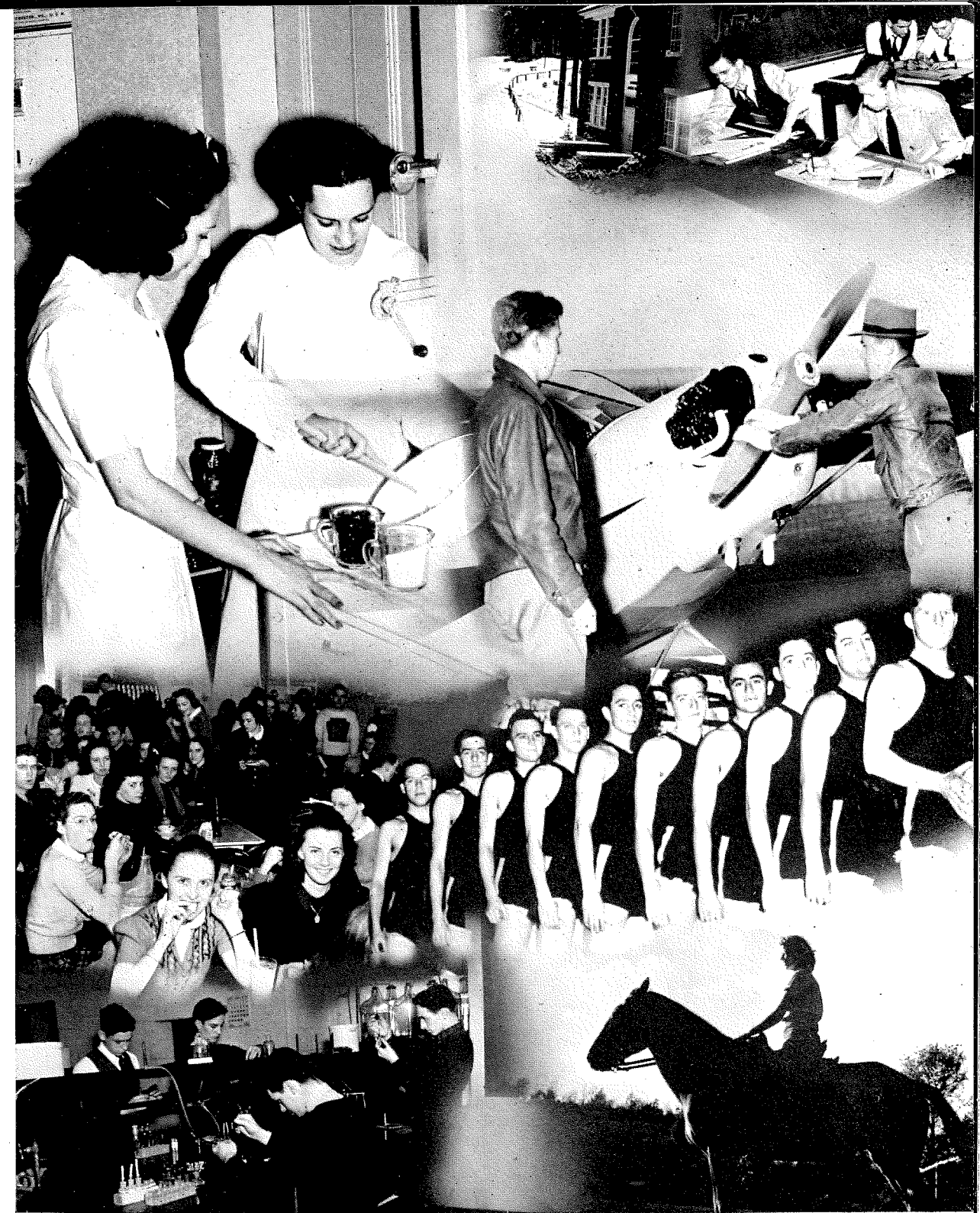
La Plume, Pennsylvania



# *Nokomian*

OF NINETEEN

HUNDRED AND FORTY





*We Dedicate This Book to . . .*

*Dr. Daniel A. Capwell, '79*



BECAUSE, as a member of the board for many years, Dr. Capwell has been a benefactor and loyal supporter of Scranton-Keystone Junior College and Academy.

BECAUSE he graduated from the Academy sixty-one years ago, and since that time has served Keystone so well that he has been awarded the Distinguished Alumnus Scroll.

AND BECAUSE we, the students of Keystone, are proud of Dr. Capwell and what he has done for this institution.

**DONALD T. FOSTER**  
Business Manager

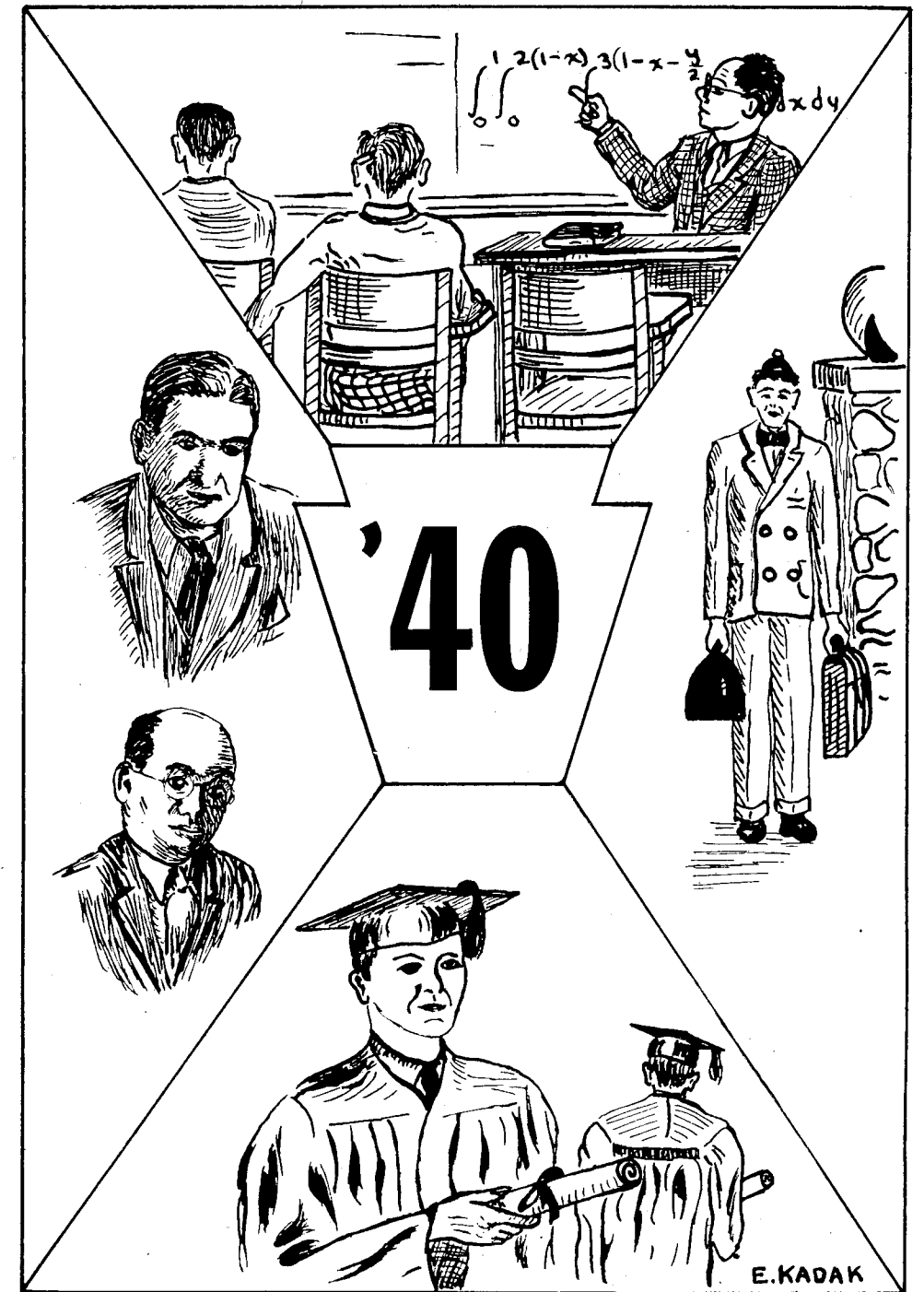
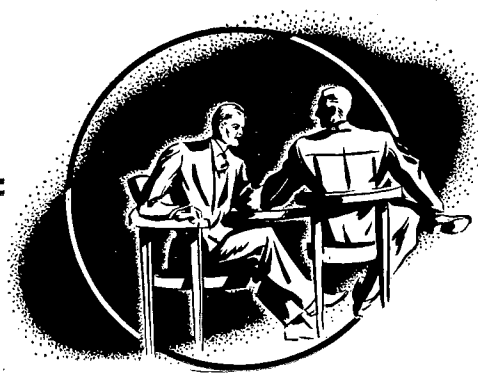
**N. S. THURSTON**  
Editor



*Before we begin . . .*

TO THE casual observer, this NOKOMIAN is not different from any other yearbook. It is merely a collection of student pictures and summaries of student activities, which will cause much hilarity to him who looks upon these pages ten years from now. But this NOKOMIAN means a great deal more than that to those of us who are Keystone—to those of us who have lived this book. It will never become outdated, but will remain a tangible monument to the friendships, the happiness, and the beauty within whose charmed circles we have lived for two years, and which have been our Keystone.

# The People at Scranton-Keystone Junior College





## BOARD OF TRUSTEES

RALPH A. AMMERMAN	Scranton, Penn'a.
REV. GEORGE R. BAKER, D.D.	New York, N. Y.
A. M. BINGHAM	Scranton, Penn'a.
JOHN H. BROOKS	Scranton, Penn'a.
DUNCAN T. CAMPELL	Scranton, Penn'a.
DANIEL A. CAPWELL, '79, M.D.	Scranton, Penn'a.
HAROLD CONRAD	Scranton, Penn'a.
E. B. FARR	Tunkhannock, Penn'a.
REESE H. HARRIS	Scranton, Penn'a.
WALTER L. HILL	Scranton, Penn'a.
EDWIN W. KEMMERER, '95, Ph.D., LL.D. HON. D., D.Sc., D.C.S.	Princeton, N. J.
JAMES A. LINEN, JR.	Waverly, Penn'a.
RICHARD E. LITTLE, '16	Clarks Summit, Penn'a.
HARRY W. MUMFORD, '96	Clarks Summit, Penn'a.
URBANE A. NOBLE, M.D.	Scranton, Penn'a.
FREDERICK J. PLATT	Scranton, Penn'a.
CARADOC REES	Nanticoke, Penn'a.
RALPH W. RYMER	Dunmore, Penn'a.
ELIAS W. THOMPSON	Factoryville, Penn'a.
JOHN S. TURN	Tunkhannock, Penn'a.
COL. L. H. WATRES	Scranton, Penn'a.
RALPH E. WEEKS	Scranton, Penn'a.
CHARLES H. WELLES, JR.	Scranton, Penn'a.
JOHN H. WILLIAMS	Scranton, Penn'a.

## EDUCATIONAL ADVISORY COMMITTEE

DR. BEN D. WOOD, Associate Professor of Collegiate Educational Research, Columbia University.
DR. E. DUNCAN GRIZZELL, Professor of Education, University of Pennsylvania.
DR. WRAY H. CONGDON, Dean of the University, Lehigh University.
DR. H. W. ROBBINS, Chairman, English Group and Graduate Division, Bucknell University.
DR. CARL E. MARQUARDT, College Examiner, Pennsylvania State College.



*Byron S. Hollinshead*

THESE paragraphs for the "NOKOMIAN" are written at a considerable distance from the Keystone Campus. For the first time since coming to Keystone in 1934, I send this message almost as an outsider, since I have not shared in your experiences for half the academic year.

Nevertheless, the affairs of Keystone have been very close to me while I have been engaged in the study which has taken me all over the United States. The closeness results not only from my own affection for Keystone, but also because the institutions I have visited look on Keystone as one of the leaders in developing a new pattern of American Education.

In essence, I think, the objectives of all of us are to meet more closely the needs of students in a world of new complexity. We succeed or fail in this attempt to the degree of our success as faculty and students in adjusting ourselves to new conditions.

We have every reason to take pride in the class of 1940, as we have had every reason to take pride in preceding classes. Certainly, as a faculty, we wish you every success in the years ahead. We hope you will return as often as possible to visit us, and that you will become from this time forward an active participant in our alumni family.



## ADMINISTRATION



DEAN WILBUR L. WILLIAMS

To a difficult and exacting task Dean Williams devotes ability and energy that are nothing short of amazing. He, like the proverbial one-armed paperhanger, is always busy. Yet, it seems that he is never too busy to help a student solve his problems, and never too busy to be friendly. Efficient, untiring, devoted to his work, the Dean is one of the outstanding factors in Keystone's success. The student body is proud, and fond, of Dean Williams.

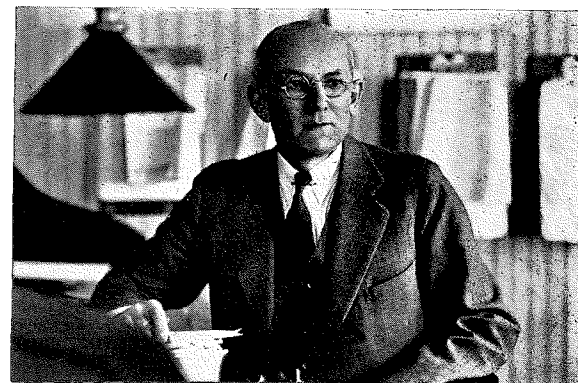


DEAN LUCILE M. SCHEUER

Miss Scheuer, our Dean of Women, fulfills her duties so capably and so smoothly that we wonder how she does it. She governs her willing charges with the "firm, but gentle" hand of which we have so often heard, and makes the job seem easy. With the versatility we have come to expect, she does well everything she undertakes, from discipline to dramatics.

F. A. DENMON, CONTROLLER

Efficiency personified—that's Mr. Denmon. He's the man who keeps the business end of Keystone running smoothly, and we think he does a fine job of it. He rises above a position which supposedly has no place for personalities, and makes friends—real friends—of us students. His quiet greeting (he always calls you by your first name) makes you think that you are one of his especial friends. And you are.



## & FACULTY

Standing, l. to r., Trapani, Williams, Strelzoff, Davies, Morris. Seated, l. to r., Oswald, Lightfoot, Stapay, Clasen, Merriam.



Standing, l. to r., Dudley, Gildersleeve, Campbell. Seated, l. to r., Haudek, Hess, Scheuer, Azar, Presper, Smith, Lee.







Left to right, MacArt, Haggarty, Stone, Fitze.

## CLASS OF 1940

### OFFICERS

**ALLAN MacART**  
President

**BARTO STONE**  
Vice-President

**ARLENE FITZE**  
Secretary

**AUDREY HAGGARTY**  
Treasurer

### *How it all happened . . .*

**A** WED, uncertain, and a little afraid, the class of 1940 entered its all-too-short career on Monday, September 13, 1938. We were awed by the stunning realization that we were in college, uncertain of our stay here, and afraid of the unholy sophomores. After the hazing period, however, we settled down to our duties as freshmen, and elected our officers, choosing Ronnie Williams for our president, Allan MacArt, vice-president, and Aimee Sobbott and Harold Watkins for our secretary and treasurer.

The first year vanished so quickly that we hardly knew where it had gone, and then, about a year ago, we saw the class of 1939 stepping out to make room for us.

Came September, and we, now the high and mighty sophomores, began our duties as instructors of the freshmen. Our pupils agreed that we showed them a very warm Freshman Week and an interesting October, during which we subjected our hapless victims to indignities at which we had cried aloud during our own hazing period.

Wasting no time, we elected Allan MacArt, as our president, Barto Stone as vice-president, Arlene Fitze as secretary, and Audrey Haggarty, treasurer.

We looked forward to the Freshman-Sophomore football game with a great deal of anticipation, but the worm turned, and with a vengeance. The Frosh powerhouse rolled easily over our incompetent, fumbling football team, and so forced us to become the first class in the history of the

### *How it all happened---continued*

college to pay for both Victory Dances. The underdogs had well earned a two-weeks' respite from the hated rules.

Winter came, and we turned our thoughts toward basketball, and clubs, and dances. We worked, studied, attended meetings, staged all sorts of affairs. In short, we enjoyed ourselves immensely. How short the winter seemed! It's gone, and we don't know where it went.

Spring has come again, and we are preparing to step out, making room for the sophomores of 1941. As we look backward over our two years, we see that we haven't been such a bad class after all, for our scholars have distinguished themselves in the classroom, and our athletes have won their niches in Keystone's Hall of Fame. We hope that the teachers we have apple-polished, and the freshmen we have hazed will remember us and miss us when we are gone.

We know we'll miss Keystone, our profs, and those lowly freshmen. We'll remember football and basketball games, the cafeteria, the Nokomis. We'll often think of Harris Hall and its old classrooms where we have left our names, of the Cattle-Wagon and the ten-of-four, of our intramural rivalries and little triumphs. We'll recall the atmosphere and the traditions which are Keystone's.

We leave with a lump in our throats . . .

Hail the class of '41!

Farewell, Keystone.

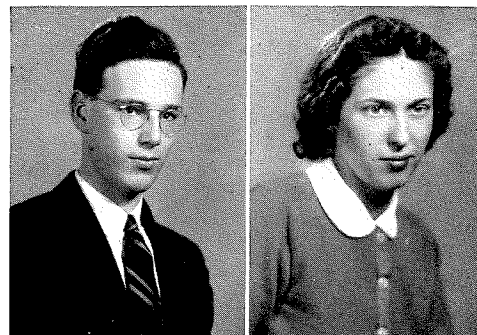


**L**ONG, lean, lanky, laconic, likeable  
... Sets an example for diligence by  
working 'till six in the Chem. lab. every  
night ... Lots of friends ... In fact,  
avery-body likes him.

**E**VY'S a witty, happy-go-lucky Medical  
Secretary ... She's athletic, too ...  
Starred on the hockey team ... Has  
more pals than Jim Farley ... Rarely  
seen without Watkins and McAndrew.

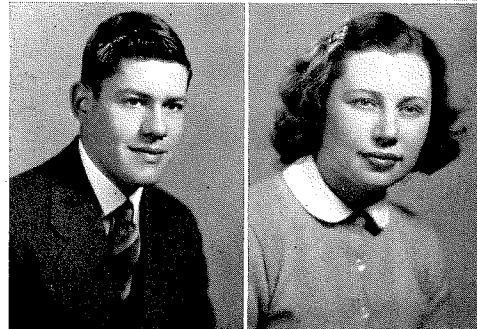
**LAWRENCE B. AVERY**

Science Club, 2; Kappa  
Sigma Epsilon, 1, 2; Intra-  
mural Sports, 1; Camera  
Club, 2; Treasurer.



**CHARLES F. BARCLAY**

Keys, 2; Kappa Sigma  
Epsilon, 1, 2, Treasurer;  
Intramural Sports, 1, 2;  
Student Council, 1, 2, Presi-  
dent.



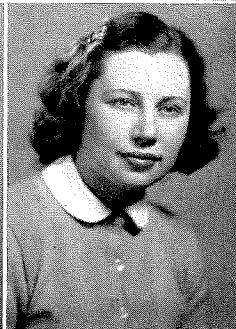
**EVELYN M. BAER**

Orange and Blue 1; Re-  
porter, 2; Secretarial Club,  
1, Secretary, 2; Science  
Club, 1, Secretary; Tribunal,  
2; Nokomian Staff, 1; Bas-  
ketball, 1; Hockey, 1, 2,  
Captain; Intramural Sports,  
1, 2; Masque and Harlequin,  
1, 2.



**DORIS A. BOSTON**

Secretarial Club, 1, 2;  
Masque and Harlequin, 1;  
Bridge Club, 1.



**H**E'S the most likely to succeed, so  
they say ... We don't doubt it ...  
Intramural sports enthusiast ... Charter  
member of the FOW, and for a good  
reason ... Top-notch scholar, too.

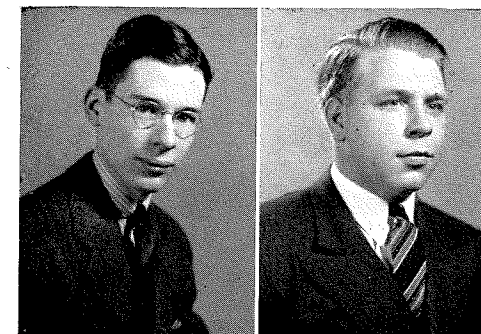
**C**ONTAGIOUS laugh ... "nifty" ...  
"swell" ... "darling" ... we'd like  
to have her for a secretary ... Used  
to be a member of the Cafeteria Society,  
but reformed.

**S**O QUIET you'd hardly know he's  
there ... But he is ... Dresses like  
the Duke of W. ... Sort of a city slicker  
... Smiles at the drop of a hat.

**A**STANDING mystery at Keystone ...  
Sleeps in class and still gets good  
marks ... He'd give you his shirt if he  
wore one ... Immortalized in verse ...  
"Watch it, bu-u-u-d."

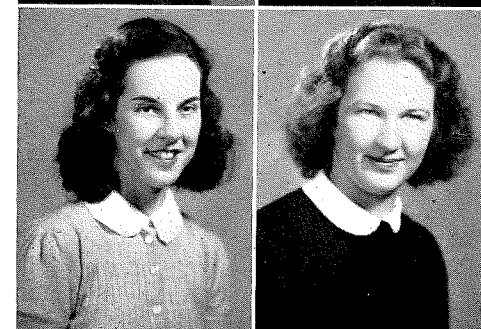
**DONALD BOUGHNER**

Business Men's Club, 2;  
Concert Association, 1; I. R.  
C., 2; Masque and Harle-  
quin, 2; French Club, 2;  
Glee Club, 2.



**REBECCA BULL**

Science Club, 2; Home  
Ec. Society, 2; Masque and  
Harlequin, 1, 2.



**GREINER BRIGGS**

Varsity "K" Club, 1, 2;  
Football, 1, 2; Intramural  
Sports, 1, 2; Masque and  
Harlequin, 2.

**HELEN CAREY**

Secretarial Club, 2; Bas-  
ketball, 2; Intramural  
Sports, 1, 2.

**S**HY Helen wins scads of friends with  
the aid of a swell smile ... Has two  
other assets—a pair of twinkling eyes  
... Tall, blonde, and charming.

**O**NE of the Tunkhannock contingent  
... Always has a smile for everyone  
... A Home Ec. who can really "set a  
table."

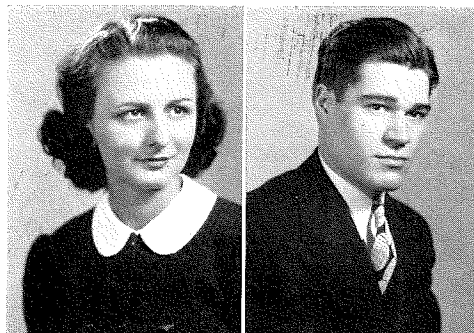


**PERSONALITY** plus . . . Proves that the weaker sex is not weak . . . Only girl taking the aviation course . . . Has her competitors doing spins trying to keep up with her.

**A PLUGGER** if there ever was one . . . an ear-to-ear grin, plus a sleepy look should make his passengers quite at ease . . . Yeah, he's one of the C. A. A pilots . . . Future ghost-to-ghost flyer.

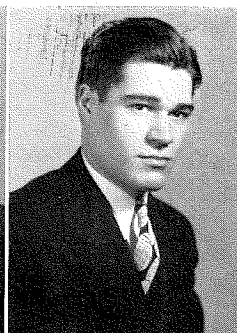
**SOPHIE COLOVOS**

Science Club, 2; Nokomian Staff, 2; Home Ec. Society, 2; Aviation Club, 2; Secretary-Treasurer; Masque and Harlequin Club, 2; Camera Club, 2, Secretary.



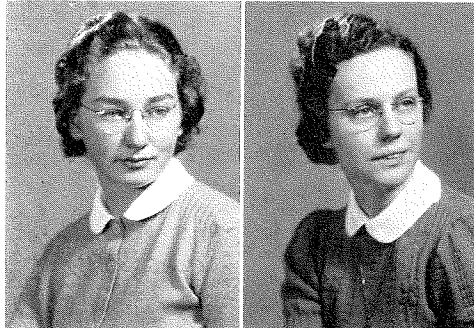
**WALTER W. COOLBAUGH**

Masque and Harlequin, 1-2; Aviation Club, 2; Intramural Baseball, 1; Class Football, 2; Wrestling, 1-2; Science Club, 2.



**RUTH E. CORKWELL**

Girls' Basketball, 1-2; Girls' Hockey, 1; Intramural Sports, 1-2; Glee Club, 1; Radio Club, 2; International Relations Club, 2; Orange and Blue, 2.



**MARY BELLE DAVIDSON**

Medical Secretarial Club, 2, Reporter; Secretarial Club, 1, 2; Science Club, 2; I. R. C., 2.



**H**ER calm exterior belies an active mind . . . Takes a lively interest in everything . . . Doesn't let her glasses keep her from playing a good brand of basketball.

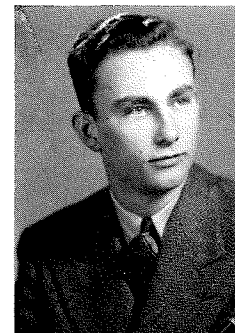
**BACTERIOLOGIST** supreme . . . Always a smile amidst slides, test-tubes, and microscopes . . . If your blood-count bothers you, see Mary Belle.

**O**NE of the shining lights of the Kappa Beta Sigma . . . Lean and loquacious . . . Sparkplug and master mind of the KBS un-victorious basketball team . . . Could sell a heater to Old Nick.

**WEINERS** and sauerkraut, hell-fire and brimstone, coffee and doughnuts—Marge and Joe . . . Languid, blue-eyed, blonde . . . 399 . . . Charter member of the Cafe Society.

**JAMES DAVIS**

Business Men's Club, 2, Vice-President; Intramural Sports, Basketball, Softball, 1, 2; French Club, 2.

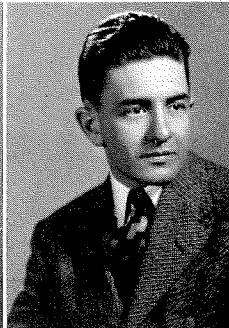
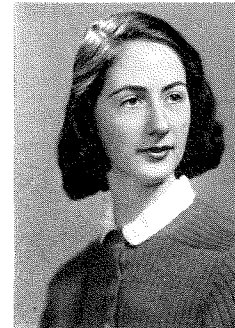


**MARJORIE DeWITT**

Radio Club, 2.

**NORLAINE ERHARDT**

K. W. O., 1, 2.



**EDWARD EVANS**

Keys, 2; Varsity "K" Club, 1, 2; Kappa Sigma Epsilon, 1, 2; Capwell Stewards, 2; Basketball, 1, 2; Baseball, 1, 2; Intramural Sports, 1, 2.

**D**ISTINGUISHED, that's Norlaine . . . She's an archery fan, or so they Tell . . . A newspaper widow, too, but she loves it . . . Most faithful member of the Cafe Society.

**H**E'S the best athlete in the school, but he would never tell you. . . Ted makes the proverbial mouse shrink in shame. . . The only thing he **will** talk about is New Jersey.



JEANY goes around sowing seeds of sunshine, and then she beams and beams until the crop matures... Three words are forever linked with her name: "Personality" and "Clarks Green."

ONE of the sweetest first baseman you ever saw... One of the nicest people you ever met... Nobody uses anything but superlatives to describe Fig. ... We think he's tops... Zipper.

#### JEAN EVANS

Orange and Blue, 1, 2; Secretarial Club, 2, Reporter; K. W. O., 1, Vice-President, 2; Keystonean, 1, 2, Editorial Board; Nokomian Staff, 1, 2; Basketball, 2; Hockey, 1, 2; Intramural Sports, 1, 2.



#### ARLENE FITZE

Orange and Blue, 2; Tribunal, 2, Secretary; Basketball, 2; Intramural Sports, 1, 2; Sophomore Class, Secretary; Masque and Harlequin Club, 1, 2.



ACTRESS, athlete, and, although she won't admit it, scholar... Spontaneous laugh... One of the few people on earth who look attractive when they are angry... Darned nice-lookin' any time.

"FLASH," "Hawkeye," "Eagle-beak." ... A gentleman if there ever was one... Diffident about meeting up with ground-balls... Zipper... A beacon to be followed if you aspire to greater tomfoolery.

#### MICHAEL FIGLIOMENE

Varsity "K" Club, 1, 2, Secretary; Tribunal, 2; Football, 1, 2; Baseball, 1, 2; Wrestling, 1; Intramural Sports, 1, 2; French Club, 2.

#### WALTER FORDHAM

Varsity "K" Club, 1, 2; Baseball, 1, 2; Intramural Sports, Football, Basketball, Baseball, 1, 2.

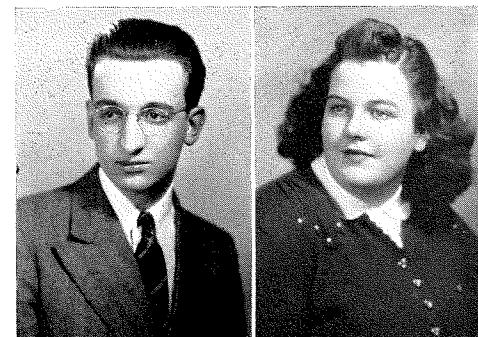


DON makes us poor mortals feel slightly insignificant, because he's so outstanding in everything he does... In spite of his prominence, he can still wear his old hats.

MARY'S the lucky owner of an effervescent sense of humor... You can't help liking her... Another diligent soul... We're glad she came to Keystone at the same time we did.

#### DONALD FOSTER

Keys, 2; Business Men's Club, 2; Concert Association, 2; Keystonean Staff, 2, Business Manager; Nokomian Staff, 2, Business Manager.



#### WALTER GILLETTE

Concert Association, 2; Wrestling, 2; Intramural Sports, 2; Glee Club, 1, 2.



#### MARY GIBBONS

Orange and Blue, 2; Science Club, 2, Vice-President; Hockey, 1, 2, Manager; Student Council, 2.

#### ALICE MARIE GILROY

Medical Secretarial Club, 1, 2; Secretarial Club, 1, 2; Science Club, 2.

WALT loves to laugh... Pop a joke, and he dissolves in mirth... If you have any sense of humor at all, you can appreciate Walt... Loose-jointed Luke.

ALICE has two assets which many a girl would like to own: beautiful auburn hair, and one of the smoothest, most pleasing voices we've ever heard... Too bad she doesn't talk more.



BOB'S an Engineer, but he's prouder of the fact that he's in the Zipper Club. . . Gets the slickest hair-comb in school. . . Likes blondes. . . Also brunettes. . . But 'specially blondes.

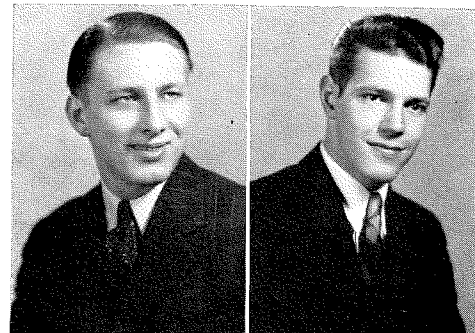
BILL'S the proud possessor of the Equilibrium and Emotion Disturber. . . Doesn't need it. . . Disturbs enough feminine emotion anyhow. . . Chemist, play-boy, lady-killer.

MR. DUDLEY gives thanks for Shirley's soprano voice. . . Hallock's envied for her appalling collection of charm-bracelets. . . Knows about shutters, finders, filters, etc.

TOM'S been in the picture ever since we came here. . . We like his grin. . . Good substantial business-man. . . Hides a slick coiffure under a little green hat.

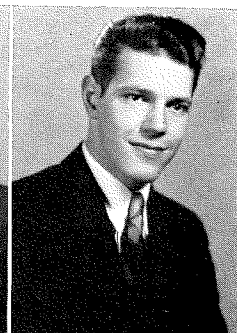
#### ROBERT GREEN

Varsity "K" Club, 2;  
Kappa Sigma Epsilon, 2;  
Intramural Sports, 2.



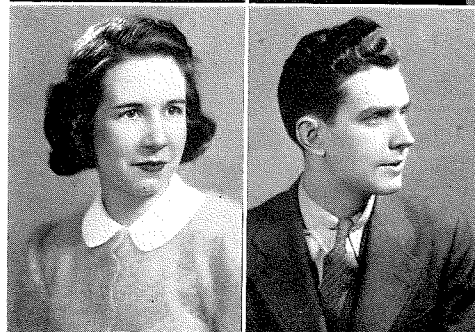
#### WILLIAM GRUDIS

Science Club, 2; Kappa  
Sigma Epsilon, 2.



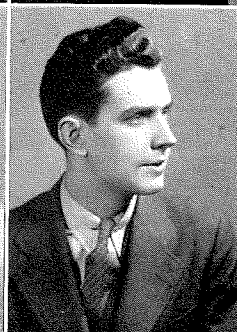
#### AUDREY HAGGARTY

Secretarial Club, 1, 2;  
Sophomore Class, Treasurer;  
Vultures, 1, 2.



#### HAROLD HALL

Kappa Sigma Epsilon, 1,  
2; Concert Association, 2;  
Keystonian Staff, 2; Noko-  
mian Staff, 2; Glee Club, 2,  
Secretary; Masque and Harle-  
quin, 1, 2; Intramural Sports,  
1.

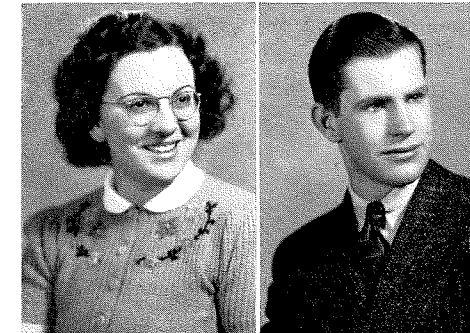


THE "A" kid. . . Ability to Accumulate an Awe-inspiring Array of A's. . . That's Audrey. . . Helped found the Vultures Club. . . Works hard, plays hard.

HAROLD can claim half the credit for Keystone dramatic productions this year. . . He's the hard-working, conscientious stage manager. . . Has a pleasing chuckle and a Glee-Club-quality voice.

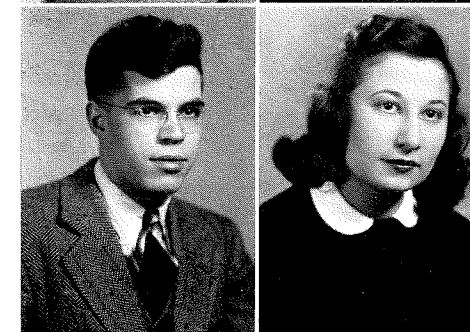
#### SHIRLEY HALLOCK

Secretarial Club, 1, 2;  
Concert Association, 1, 2;  
Glee Club, 1, 2.



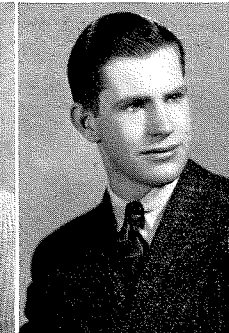
#### WALTER HECKMAN

Kappa Sigma Epsilon, 1, 2;  
Intramural Sports, 1, 2.



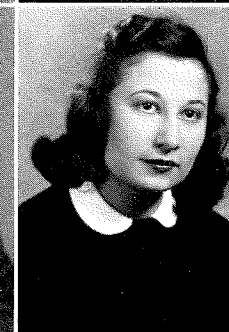
#### THOMAS HAZZARD

Business Men's Club, 2;  
Intramural Sports, 2; Mas-  
que and Harlequin, 2.



#### ELMA HOLLENBERG

Medical Secretarial Club,  
2; Secretarial Club, 1, 2,  
Treasurer.



LAST year he was admitted to be "cute" . . . This year—even more so. . . Heck's made his mark as photographer, engineer, and racing driver. . . Walter gets around. . . Mais oui.

CALM, dark, tall. . . A member of that mysterious blood-counting, microscope-peering clan—the Med. Sec's. . . Lucky germs to be under Elma's beautiful gaze. . . Swell smile and personality.

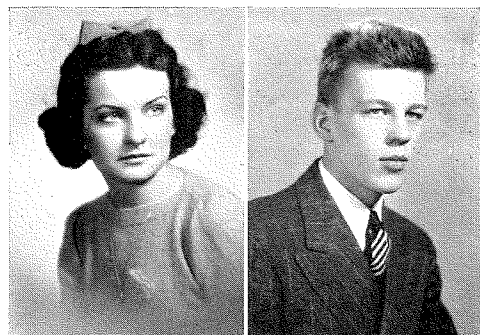


**O**H! Them eyes! Jean's got a pair of slow-burning, more-for-your-look eyes . . . Hard to know, but well worth knowing . . . Lucky boss to get Jean for a secretary.

**E**DITOR KELLER would argue all day long just for the stimulation of it . . . Only guy in school who looks like a poet . . . He is a poet, too . . . Only success ahead for Luther.

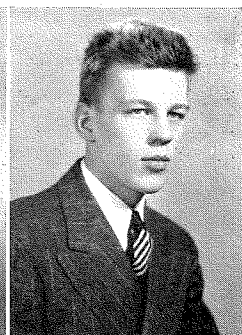
#### JEAN MARIE JUDGE

Secretarial Club, 1, 2; Debating, 1, 2, Manager; Science Club, 2; Keystonean Staff, 1, 2, Editorial Board; Nokomian Staff, 2; Masque and Harlequin Club, 1, 2.



#### LUTHER KELLER, II

Keystonean Staff, 1, 2, Editor; Nokomian Staff, 1, 2; Intramural Sports, 1, 2; Student Council, 1, 2.



#### FRED KOLLMORGEN

Business Men's Club, 2; Radio Club, 2; Aviation Club, 2, President.



#### WILMINE S. LANE

Girls' Hockey, 1-2; Orange and Blue, 1-2; Secretarial Club, 2.



**"JOE COLLEGE"** is almost a stranger around here since he took up flying . . . Like most of us he enjoys snoozin' . . . Well-mannered, and friendly . . . Favorite expression: "Have ya seen Marge?"

**C**AME direct from Japan . . . It's rumored she hates rice . . . Dave took her out of circulation last year . . . C'est dommage . . . Has one of those lovely voices that are so rare.

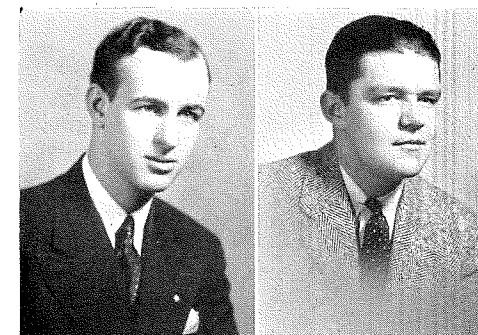


**H**YMIE is noted for his skating . . . How he can be a chemist and still have a sense of humor is a standing enigma . . . Well-known for his basketball mustache.

**"GRANTLAND RICE, shove over"** . . . As athlete and columnist, Lep knows his sports inside and out . . . He has, and uses, a beautiful tenor voice . . . Hates, but always repeats, bad puns.

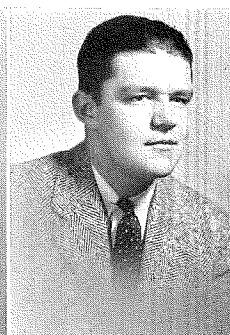
#### ROBERT LEHR

Keys, 2; Science Club, 2; Kappa Sigma Epsilon, 1, 2; Concert Association, 1, 2; Capwell Stewards, 1, 2; Intramural Sports, 1.



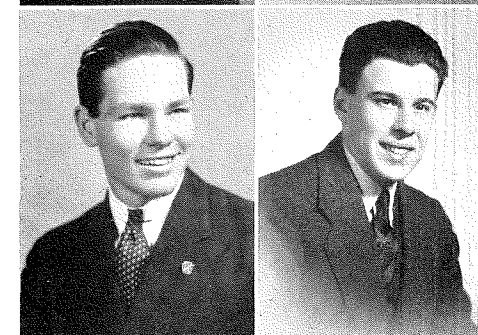
#### JOSEPH LEPRI

Varsity "K" Club, 1, 2, President; Business Men's Club, 2; Concert Association, 1, 2; Keystonean Staff, 1, 2; Nokomian Staff, 1, 2; Football, 1, 2; Baseball, 1, 2; Intramural Sports, 1, 2.



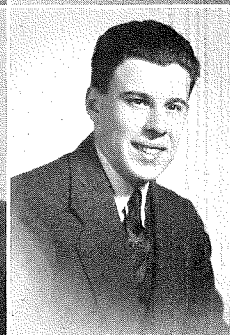
#### RONALD LLOYD

Varsity "K" Club, 1, 2; Business Men's Club, 2, Treasurer; Nokomian Staff, 2; Football, 1, 2; Wrestling, 1; Intramural Sports, 1, 2; Masque and Harlequin Club, 1, 2; Glee Club, 1.



#### CASPER J. LONGO

Phi Delta Fraternity, 2; Kappa Sigma Epsilon, 1, 2; Intramural Sports, 1, 2.



**N**OTED for his infectious laugh . . . Has unusual football ability . . . Also esteemed for his unbounded energy in intramural sports . . . Absolutely the loosest-jointed person we ever saw.

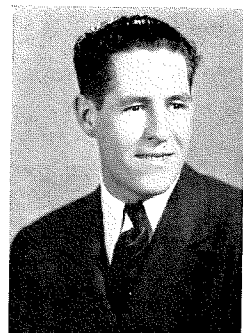
**H**E'S the fireman at the Phi-Delta house, in addition to being a plugging engineer . . . Spent Fall afternoons urging cheers from backward rooters . . . Some guy!



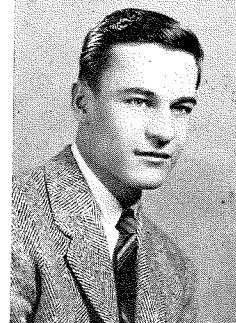


**A** HE-MAN from away back . . . Smokes, shoots, fishes, does everything a real man should . . . Owns a deep, deep, deep bass voice . . . Intramural sports fan of unbounded enthusiasm.

**EDWARD LYNCH**  
Business Men's Club, 2;  
Intramural Sports, 1, 2.



**FRANK MAHOLCHIC**  
Varsity "K" Club, 1, 2;  
Business Men's Club, 2; Keystone Staff, 2; Football, 2;  
Baseball, 1, 2; Intramural Sports, 1.

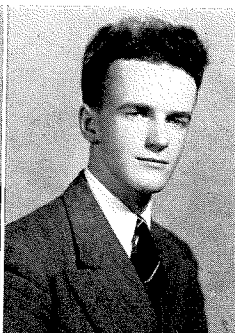


**M**ASCULINE beauty . . . Mighty brawn . . . Frank is really tall, dark, and handsome . . . Mainspring of the football and baseball teams . . . Delight of his coaches and the despair of his opponents.

**A** REAL personality on the campus . . . Conscientious, thorough, Allan has served the school well . . . Everybody'll vote for him when he's senator . . . Always time for a smile . . . \$1,000,000 grin.

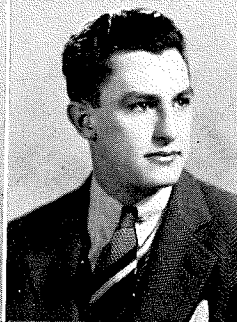
**WILLIAM ALLAN MacART**

Keys, 2; Concert Association, 1, 2; I. R. C., 1, 2, President, 2; Keystone Staff, 1, 2, Editorial Board, 2; Nokomian Staff, 1, 2; Tennis, 1, 2; Intramural Sports, 1, 2; Class Officer: Freshman, Vice-President; Sophomore, President; Glee Club, 1, 2; Representative, Alumni Board.



**WILLIAM MATHIAS**

Keys, 2; Varsity "K" Club, 1, 2; Kappa Sigma Epsilon, 1, 2, Vice-President, 2; Concert Association, 1; Tribunal, 2; Capwell Stewards, 1; Football, 1, 2; Wrestling, 2; Intramural Sports, 1, 2.



**W**ILD BILL can block, and tackle . . . He can also get a seat on the cattle-wagon . . . Crashes through with marks when they count . . . Another handsome football player.



**W**HAT with sports and writing for the Keystone and Nokomian, Mac has really done her bit for Keystone . . . She's inseparable from Watkins and Baer.

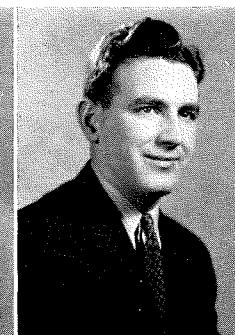
**H**E didn't kiss the Blarney Stone, he swallowed it . . . Good-looking, friendly, cut-up . . . This familiar figure will really be missed from the campus . . . Charter member of Cafe Society.

**JEAN McANDREW**

Orange and Blue, 1, 2; Medical Secretarial Club, 1, 2; Secretarial Club, 1, 2; Science Club, 2; Keystone Staff, 1, 2; Nokomian Staff, 2; Basketball, 1, 2; Hockey, 1, 2; Masque and Harlequin, 1, 2; Intramural Sports, 2.



**EUGENE McANDREW**  
Varsity "K" Club, 2; Radio Club, 2, Vice-President.

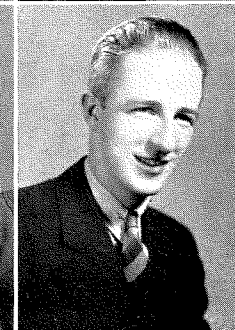


**KATHRYN McHALE**

Medical Secretarial Club, 1, 2; Secretarial Club, 1, 2.



**WILLIAM McKIBBEN**  
Kappa Sigma Epsilon, 1, 2; Intramural Sports 1, 2.



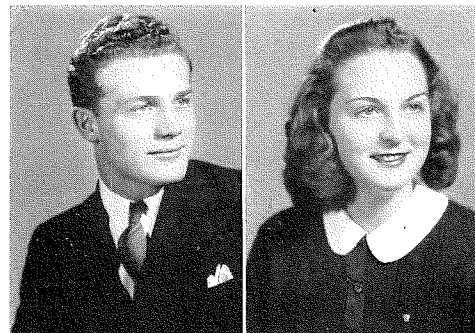
**Q**UIET, hard-working Medical Secretary . . . We rarely see her around . . . Spends her time blood-counting and slide-gazing . . . Keystone needs more studious people like Kathryn.

**B**ILL'S a master-mind . . . By sheer force of genius he has coaxed the cattle-wagon from Carbondale to La Plume and back for two years . . . Absolutely loyal to his dozens and dozens of friends.

OTTO'S one of the Old Guard at Keystone . . . Keystone will be a different place without him . . . Boisterous, handsome, good-natured . . . He's slap-happy-go-lucky.

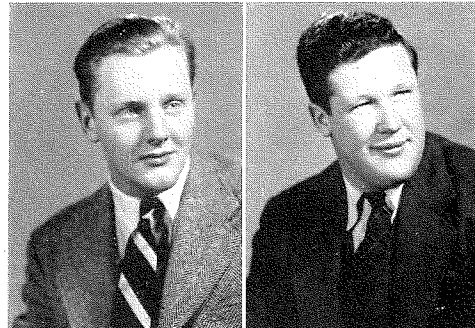
#### HENRY OTTO

Business Men's Club, 2.



#### STEPHEN QUACKENBUSH

Radio Club, 1, 2, President, 2; Keystone Staff, 1; Aviation Club, 2; Football, 1; Intramural Sports, 1; Phi Delta Fraternity, 2.

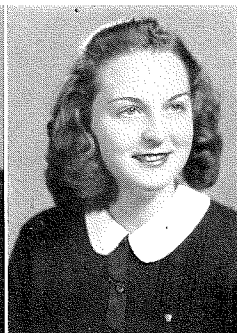


STEVE hasn't let his studies interfere with his extra-curricular activities . . . We've seen him about a dozen times since Freshman Week . . . Radio and automobile fanatic . . . Loves to argue.

DORIE always appears calm, cool, collected . . . Glamor girl . . . Such eyes! . . . Such hair! . . . She makes us wish we were tall, dark, and handsome . . . Has a swell chuckle.

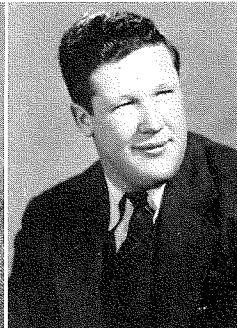
#### DORIS PIZER

Orange and Blue, 2; Secretarial Club, 1, 2, Vice-President, 1; Hockey, 2; Intramural Sports, 1, 2.



#### PHIL RIPPON

Varsity "K" Club, 1, 2; Tribunal, 2; Football, 1, 2; Wrestling, 1, 2; Intramural Sports, 1, 2; Glee Club, 2; Phi Delta, 2.

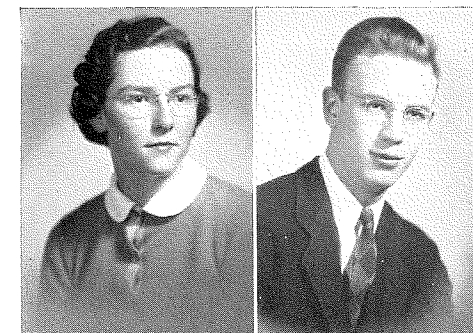


JOLLY Phil is just one big smile, but he can be tough when he wants to . . . Charging tackle . . . Undefeated wrestler . . . Friend of the people . . . Smooth tenor . . . Versatile, what?

DEADEYE Dick had nothing on Barbara . . . How this gal can shoot a basketball! . . . Her soprano voice is a joy to Mr. Dudley's heart . . . In her working hours, a Medical Secretary.

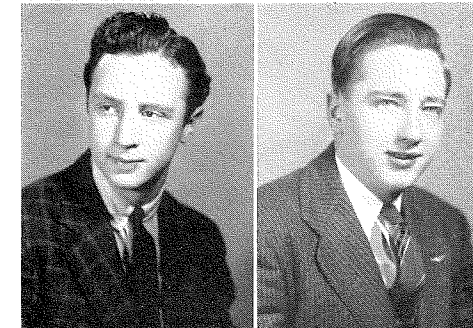
#### BARBARA ROBERTS

Orange and Blue, 1-2; Medical Secretarial Club, 1-2; Secretarial Club, 1-2, Secretary-Treasurer, 2; Concert Association, 1-2; Basketball, 1-2; Intramural Sports, 2; Glee Club, 1-2.



#### IRVING SILVERSTEIN

Varsity "K" Club, 1-2; Radio Club, 1; Kappa Sigma Epsilon, 2; Keystone Staff, 1-2; Nokomian Staff, 1-2; Football, 1-2; Wrestling, 2; Intramural Sports, 1-2.

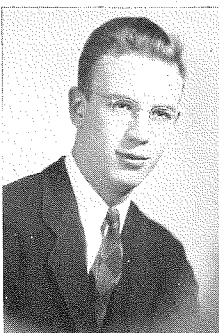


LONG John Silver early achieved recognition for his wit, his dancing, and his sleepy look . . . Makes terrible puns . . . Grins with pride . . . Captain of last year's ill-starred Sinkers.

IN our opinion, Dave's one of the swellest guys on the campus . . . Dry humor . . . Farm talk . . . Pipes and tobacco . . . Easy to get along with . . . "A" student . . . O. K. plus!

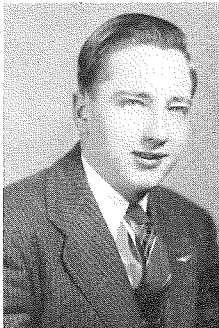
#### DAVID RUSS

Keys, 2; Concert Association, 2; I. R. C., 1-2, Vice-President, 2; Keystone Staff, 2; Glee Club, 1-2, President, 2; Intramural Sports, 1-2.



#### J. T. SMITH

Kappa Sigma Epsilon, 1-2, Secretary, 2; Basketball, 1-2; Varsity "K" Club, 2; Tennis, 1-2; Intramural Sports, 1-2; Tribunal, 2; Aviation Club, 2.



TERPISCHOREAN par excellence . . . Phi Delta fella . . . C. A. A. pilot . . . Regular feller . . . Smitty has about the finest collection of jokes around . . . Flies a plane, drives a Ford, would like to be a Sailer.



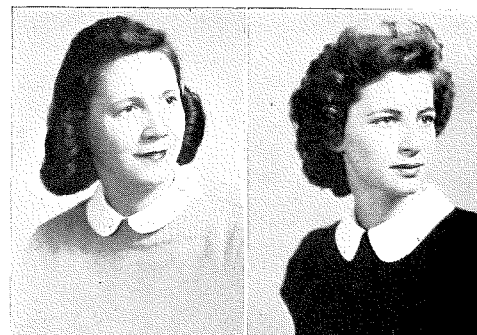


A COMMON name, but that's as far as it goes . . . Vulture . . . goof natured . . . very agreeable.

SHE'S a top-notch soprano . . . Generally carries a hand bag the size of a suitcase.

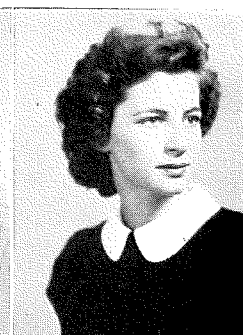
#### MARY SMITH

Kappa Sigma Epsilon, 1-2, Secretary, 2; Basketball, 1-2; Varsity "K" Club, 2; Tennis, 1-2; Intramural Sports, 1-2; Tribunal, 2; Aviation Club, 2.



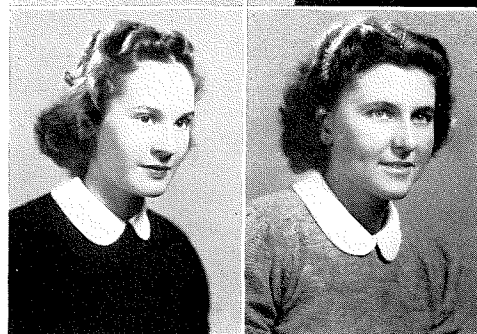
#### RUTH SMITH

Secretarial Club, 1-2; Concert Association, 2; Keystone Staff, 2; Glee Club, 2; Intramural Sports, 1-2; Masque and Harlequin, 1-2.



#### AIMEE SOBBOTT

Orange and Blue, 1-2, Vice-President, 1; President, 2; K. W. O., Vice-President, 1; President, 2; Debating, 1; Tribunal, 2; Basketball, 1-2, Co-Captain, 2; Hockey, 1-2; Intramural Sports, 1-2; Vice-President, Freshman Class; Masque and Harlequin, 1-2.



#### HAZEL SPENCER

Secretarial Club, 1-2; Intramural Sports, 1-2.



THERE'S only one Aimee . . . Brains plus beauty . . . Athletic . . . Can get better marks with less work than anyone we know . . . As popular as lunch hour . . . A heart-breaker, Frank-ly speakin'.

CAN exhibit one of Keystone's most charming smiles . . . Astounding ability for work.



PICTURE Rock's contribution to Keystone . . . Future Medical Assistant . . . The always-smiling type . . . In the Vulture's Club . . . She's really swell!

WILL always be remembered as the ace character actor . . . A booming laugh is indicative of his enviable personality . . . We predict that Bart is the Spencer Tracy of the future.

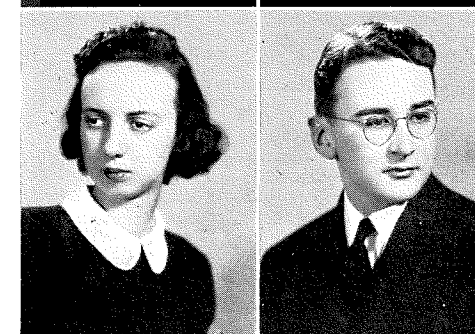
#### DOROTHY SPROUT

Masque and Harlequin, 1-2; Glee Club, 1-2; Secretarial Club, 1-2-3; Tribunal, 2.



#### ELEANOR STORM

Secretarial Club, 1-2; Intramural Sports, 1-2; Masque and Harlequin, 1-2.



#### BARTO STONE

Debating, 2; Concert Association, 1-2; I. R. C., 2; Vice-President, Sophomore Class, Masque and Harlequin, 1-2, President, 2; Glee Club, 1-2.

#### N. S. THURSTON

Keys, 2; Keystone Staff, 2, Editorial Board, Nokomian Staff, 2, Editor; Baseball, 1-2; Assistant Manager, 1; Manager, 2; Intramural Sports, 1-2.

QUIET . . . efficient . . . Medical Secretary . . . Stormy is really the possessor of an iron nerve—riding in the Cattle Wagon never disturbed her aimable disposition.

LOUSY puns . . . Screwball reporter . . . Protoplasm on the rampage . . . Canton's press agent . . . Noted for his ability to loaf gracefully . . . The converse is also true . . . Future ace copy-boy.

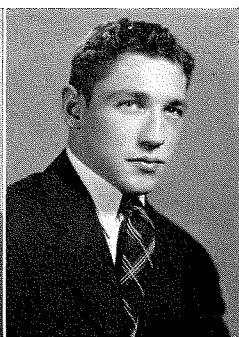


**BEAUTIFUL** Tomato . . . Can cook like nobody's business . . . Will attract dozens of patients to the office of some lucky doctor, if Hollywood doesn't get her first . . . Nicest eyes in school.

**VIES** with Ted Evans for honors as Keystone's quietest man . . . Has a slow smile that earns lots of friends . . . Clouts a mean softball . . . Woos Morpheus with zeal and ability.

#### FLORENCE TOMILLO

Orange and Blue, 2; Secretarial Club, 1-2; Science Club, 2; Hockey, 2; Intramural Sports, 1-2.

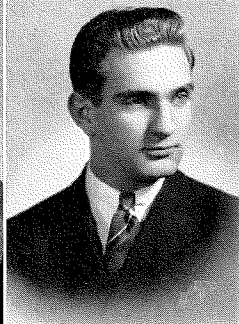
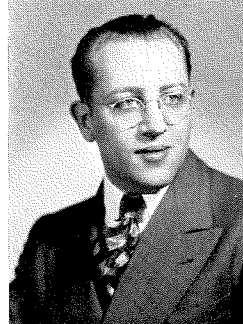


#### KENNETH TRONE

Football, 2; Wrestling, 2; Kappa Beta Sigma, 2.

#### ROBERT WAGNER

Varsity "K" Club, 2; Kappa Beta Sigma, 2; Football, 2; Baseball, 1-2; Intramural Sports, 1-2.



#### JAMES G. WALL

Kappa Beta Sigma, 2; Keystone Staff, 1-2, Circulation Manager; Intramural Sports, 1-2.

**"DEACON,"** "Reverend," "Cobina," "Honus" . . . This guy has more names than the King of England . . . A second Eddie Collins . . . Mild as a spring morning . . . Hard as a landlady's heart.

**SLEEPY** Jim . . . Famous for his class-cutting proclivities . . . Always turns up with a valid (?) excuse . . . One of the gang.

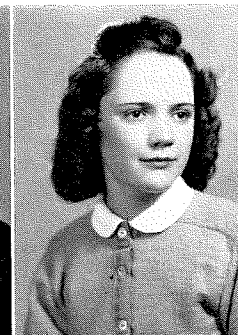


**MED.** Sec. turned Vulture . . . Perpetually seen running around looking for people to blood-count . . . Perennially unsuccessful . . . Cottage cutie.

**SMALL** in stature, but obvious in ability . . . A country gal who'll become a medical-secretary city slicker . . . **Keystonian** gal reporter . . . Bosom pal of Baer and McAndrew.

#### HELEN WARRICK

Medical Secretarial Club, 1-2, President, 2; Secretarial Club, 2; Intramural Sports, 2.

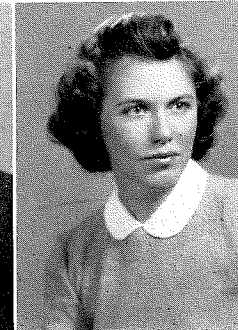
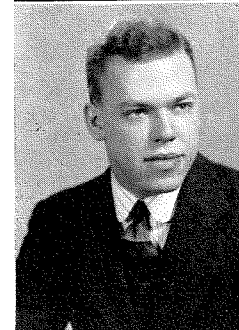


#### ELIZABETH WATKINS

Orange and Blue, 2; Secretarial Club, 1-2; Science Club, 2; Keystone Staff, 1-2; Nokomian Staff, 2; Masque and Harlequin, 1-2; Basketball, 1-2, Assistant Manager, 1; Manager, 2.

#### HAROLD P. WATKINS

Keys, 2; Varsity "K" Club, 1-2, Vice-President, 2; Kappa Beta Sigma, 2; Concert Association, 1-2; Tribunal, 1; Keystone Staff, 2; Nokomian Staff, 2; Football, 1-2; Basketball, 1-2; Intramural Sports, 1-2; Treasurer, Freshman Class; Student Council, 2; Glee Club, 1-2.



#### RUTH L. WEBER

Secretarial Club, 2, President; Intramural Sports, 1-2; Student Council, 1-2, Secretary, 2.

**TYPICAL** Keystone man . . . Cheery laugh . . . President of Tribunal . . . Football and basketball star . . . Owns oddest nick-name: Gummy . . . Joe Esquire . . . Slick dancer.

**NEVER** without a cherry greeting . . . As freshman, got t'rown for a loss . . . Dean's List leader . . . Quite naturally was elected to Student Council . . . Superior natatorette.

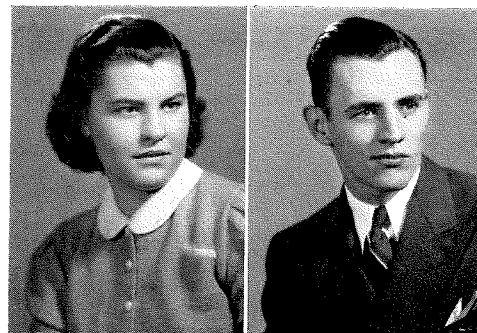




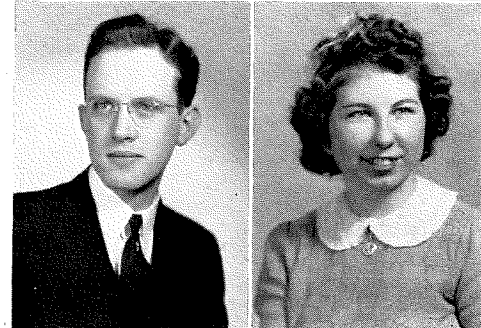
**VERNA** will make a fine secretary—she'll never annoy her boss with noise . . . Has a soft, charming voice . . . As friendly as the day is long.

**VOCIFEROUS** exponent of rights and privileges of the engineers . . . 109th Regiment—N. G. . . . Has a miniature battlefield, complete with casualties . . . Famous for store of repeatable jokes.

**VERNA WIELAND**  
Secretarial Club, 2; Basketball, 2; Intramural Sports, 1-2.



**GARFORD WILLIAMS**  
Concert Association, 1-2; Keystonean Staff, 2; Glee Club, 2; Masque and Harlequin, 1-2.



**HIS** intonation, his diction, his remarks are noted for their refinement and elegance . . . One of the old school of speakers, who quotes the Bible, verbatim, at the drop of a hat.

**SALLIE** is noted for an abundance of good spirits . . . She's really appreciated by her fellow-students . . . This future social worker can be nothing but successful . . . Tops.

#### EVAN WILLIAMS

Keys, 2; Kappa Sigma Epsilon, 1-2, President, 2; Capwell Stewards—Head Steward, 2; Wrestling, 2; Intramural Sports, 1-2.

#### SALLIE WITTER

Radio Club 1; Concert Association, 1-2; I. R. C., 2; Intramural Sports, 1-2; Cheerleader, 2; Masque and Harlequin, 1; Glee Club, 1-2.

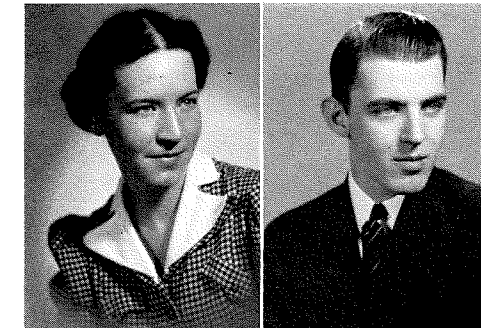


**AS MUCH** a lady as Charlie is a gentleman . . . Popular with girl and boy students alike . . . Seamstress extraordinary . . . Handy with a camera.

**A PERFECT** gentleman . . . Never gives any of the female students a break . . . Hardest-working, least-appreciated member of the **Keystonean** staff . . . Ex-Cornell lady-slayer . . . Super.

#### ALICE WOOD

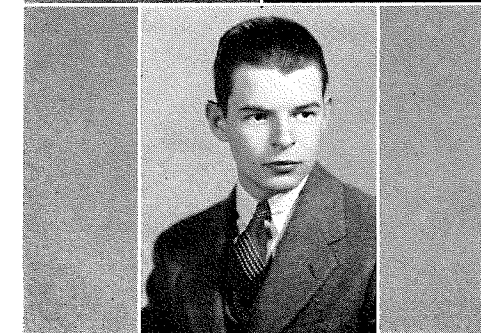
President, Home Economics Society, 3; Intramural Basketball, 1-2; Masque and Harlequin, 1-2; Glee Club, 1-2; Secretary, Student Council, 2; President of the Cottagers, 2.



**CHARLES WOOD**  
Assistant Circulation Manager, Keystonean, 2.

#### HAROLD YEAGER

Kappa Beta Sigma, 2; Concert Association, 2; Glee Club, 2.



**HAPPY** Hal . . . Just one smile after another . . . Mystery surrounds him: How in Hal can he be so good-natured and live? Easy (and swell) to know.



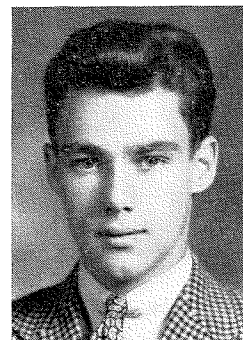
#### JAMES GENTER

SLEEPY, sandy-haired Jim is as well-liked as anyone... It must be that Western accent... Uses his fog-horn voice to startle, heckle, rouse... As full of tall tales as a Paul Bunyan omnibus.

#### WILLIAM KELSON

SLEEPY, good-natured, tousle-haired Bill is another C. A. A. pilot... You always know what he's talking about, for he makes himself perfectly plane... Nice guy to know.

Kappa Beta Sigma, 2,  
President; Aviation Club, 2;  
Intramural Sports, 1-2.



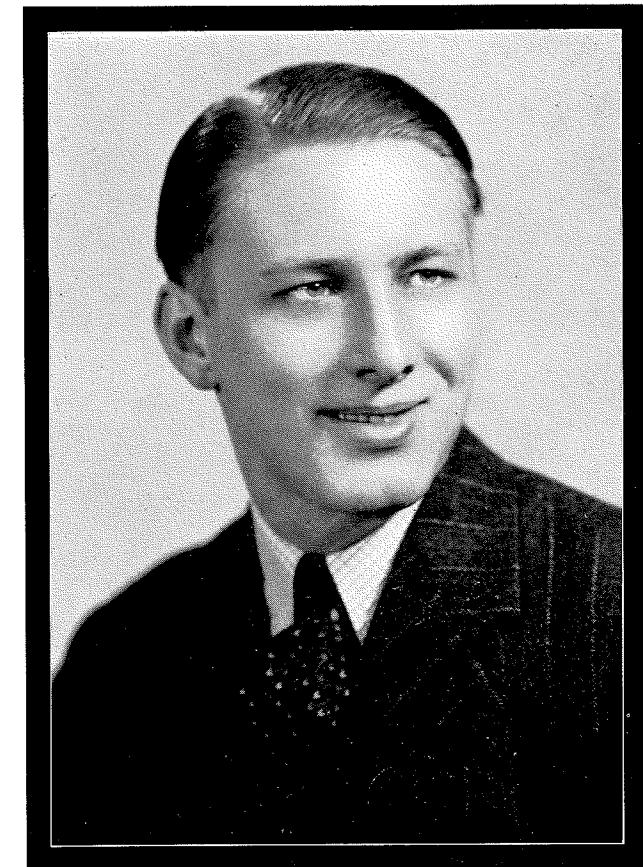
#### ROBERT B. McCLAVE, JR.

Tennis, 1; Debating, 2; In-  
tramural Sports, 1-2.

TALL and lanky... Calm and collected, and then by turns excitable and a genuine jitter-bug—not to mention tap dancer... fond of music... hopes to be an Engineer some day.



### *In Memoriam*



#### ROBERT LINCOLN GREEN

March 18, 1920

May 18, 1940

WE DEDICATE this page to the memory of Robert Lincoln Green, of the Class of 1940. Bob's untimely death shocked and saddened beyond expression all his friends, and they were legion. Words can never tell the grief that was felt at his sudden passing. We, Bob's classmates and collegemates, will never forget him, for his friendly personality and active participation in college life made Bob known and loved by everyone.

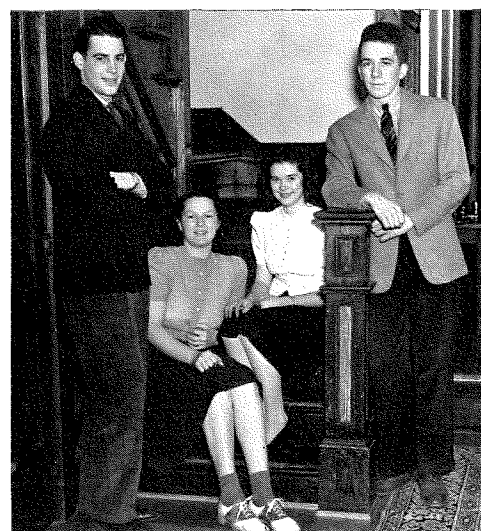


## CLASS OF 1940 POLL

1. How old will you be when you graduate? 19.
2. Probable occupation? Teaching, Medical Secretary.
3. Do you plan to go elsewhere? Yes, 43; No, 21. Where? Undecided; Penn State.
4. If you do not plan to go on, do you have any expectation of early employment? Yes, 15; No, 14.
5. How much annual salary do you expect to be receiving five years hence? \$1,500.
6. Do you consider your college years profitably spent? Yes, 63; No, 5; Doubtful, 1.
7. What course did you find most profitable? Philosophy; Economics (Tie).
8. What course was most enjoyable? Philosophy; Economics (Tie).
9. What course was least profitable? Integration; Lit; Economics.
10. What student has done most for Keystone? MacArt.
11. What student has done most for the class? MacArt.
12. Most typical Keystone man? Watkins.
13. Most typical Keystone woman? Sobbott.
14. Your sex? Male, 40; Female, 28; No answer, 2.
15. Best athlete? Ted Evans, Frank Maholchic.
16. Best writer? Thurston, Keller.
17. Best speaker? Barto Stone.
18. Most popular man? Watkins, MacArt.
19. Most popular woman? Sobbott.
20. Most modest student? G. Williams; Corkwell.
21. Least modest? Otto.
22. Least appreciated student? Otto; Nicholas, Me (Tie).
23. Most likely to succeed? Barclay and Russ (Tie).
24. Best natured? Witter (Soph.); O'Malley (Frosh).
25. Wittiest? Thurston.
26. Handsomest? Grudis and Maholchic (Tie).

## CLASS OF 1940---Continued

27. Most beautiful? Tomillo (Soph.); Sailer (Frosh).
28. Most brilliant? Gibbons.
29. Noisiest student? Otto.
30. Most bashful? E. Evans.
31. Best politician? Keller.
32. Most reliable? Thurston.
33. Is best apple polisher? Otto; Warrick.
34. Needs to apple polish? Myself; Lynch.
35. Most unselfish? Gillette; Hall, Otto (Tie).
36. Favorite college (other than Keystone)? State; Syracuse; Lehigh.
37. Favorite author? Margaret Mitchell.
38. Favorite actor? Clark Gable.
39. Favorite actress? Hedy LaMarr.
40. Favorite play or movie of the year? "Gone With the Wind."
41. Favorite magazine? Reader's Digest.
42. Favorite newspaper? Scranton Tribune.
43. Favorite sport? Football.
44. Favorite amusement? Dancing.
45. Favorite political party? Republican, 50; Democrat, 11.
46. Most helpful Keystone activity? Orange and Blue.
47. Highest undergraduate honor? Dean's List.
48. Do you smoke? No, 39; Yes, 30.
49. a. Would you support any war involving us? Yes, 27; No, 32.  
b. Would you support U. S. participation in a war to defend the Western Hemisphere? Yes, 38; No, 18.  
c. Would you support only a purely defensive war on our own territory? Yes, 55; No, 6.  
d. Would you refuse to support any war? Yes, 15; No, 39.
50. If you had not come to Keystone, what would you have done? Gone to another school; worked.



Left to right, Morgan, Gardner, Sailer, Huber.

## CLASS OF 1941

### *In the beginning . . .*

WHEN the diplomas are awarded to the Sophomores this June, we of the Freshman class are going to realize that it is time for us to take more responsibility—and certainly the Sophomores have conditioned us to meet it.

The Freshmen this year were ushered in with open hands. The Sophomores welcomed us, and for almost three months we endured “the worst hazing in Keystone’s history.” Most Freshmen still suffer a nervous reflex when they use the front door instead of the back, and but a few iron personalities can restrain a shudder when a rodent’s name is mentioned . . . “Hey, Rat, button!” We were an incorrigible class, so the Sophomores said. Almost every member of our class was called before the Tribunal for “insubordination,” a very comprehensive term indeed. Our dinks and ties made us a group distinct for some time. We were a constant source of amusement to our domineering upperclassmen.

Well, either because of, or in spite of, this hazing, we have become active participants in Keystone affairs. We have our athletes and our Letter Men; our brain-trusters and Dean’s Listers; our punsters (who, with a little more seasoning may well succeed the Sophomore humorist); our *Keystonian* and *Nokomian* workers; and our staunch supporters of those factions: the business men, the liberal arts, and the engineers. We have them all, and the job of campus leaders is going to be left up to us next year.

#### OFFICERS

**ROBERT HUBER**  
President

**EVELYN SAILER**  
Vice-President

**WILLIAM MORGAN**  
Treasurer

**LOIS GARDNER**  
Secretary

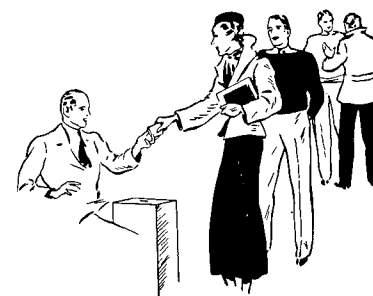
### *In the beginning---continued*

Shall we dwell a moment or so upon our past glories? Well we might, for we vanquished the Sophomores in the annual interclass football game . . . vanquished them nobly. We were rewarded with a dance given by the vanquished for the victors. They were defeated in another way; freshman rules were suspended for two weeks. Again we breathed the air of freedom and were no longer hunted “rats.”

We appreciate our one grand year at Keystone. We have had busy, yet happy, days. We have tasted of the Keystone wood-magic, and though some of us will transfer to other schools, and though others of us may not come back next year, the Keystone spirit will always be with us. Keystone offers a student much more than its recognized high scholastic standing. We freshmen have found that out in our first year here.

Well, it seems we are going to be Sophomores. They have filled their place well, and now it is time for us to march forward and try to “fit their footsteps.” That will call for class cooperation. There is a glorious and grand year ahead for us. Let’s face it with confidence.

Now, we look toward the future.





# Autographs



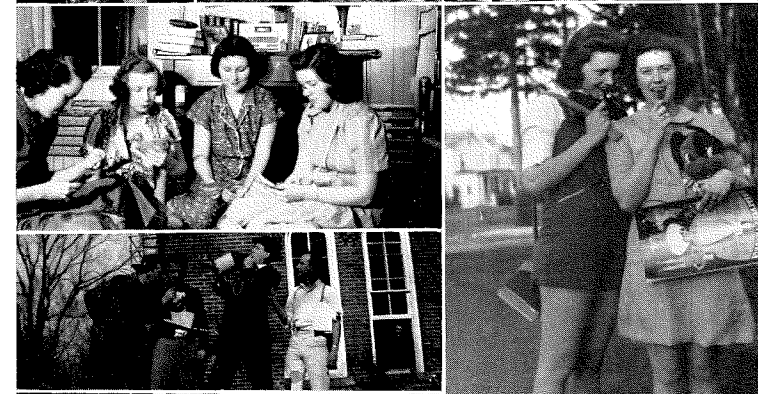
May Day, 1939, with Sue Moffat and Marion Seroukis in the starring roles . . . Tomato and Watkins enjoying the view.



Wacky Freshman engineers, showing off . . . O'Malley, Inc. riding his business.



Physics and Chem students, caught in the act . . . Paradox —Happy frosh, in full regalia.

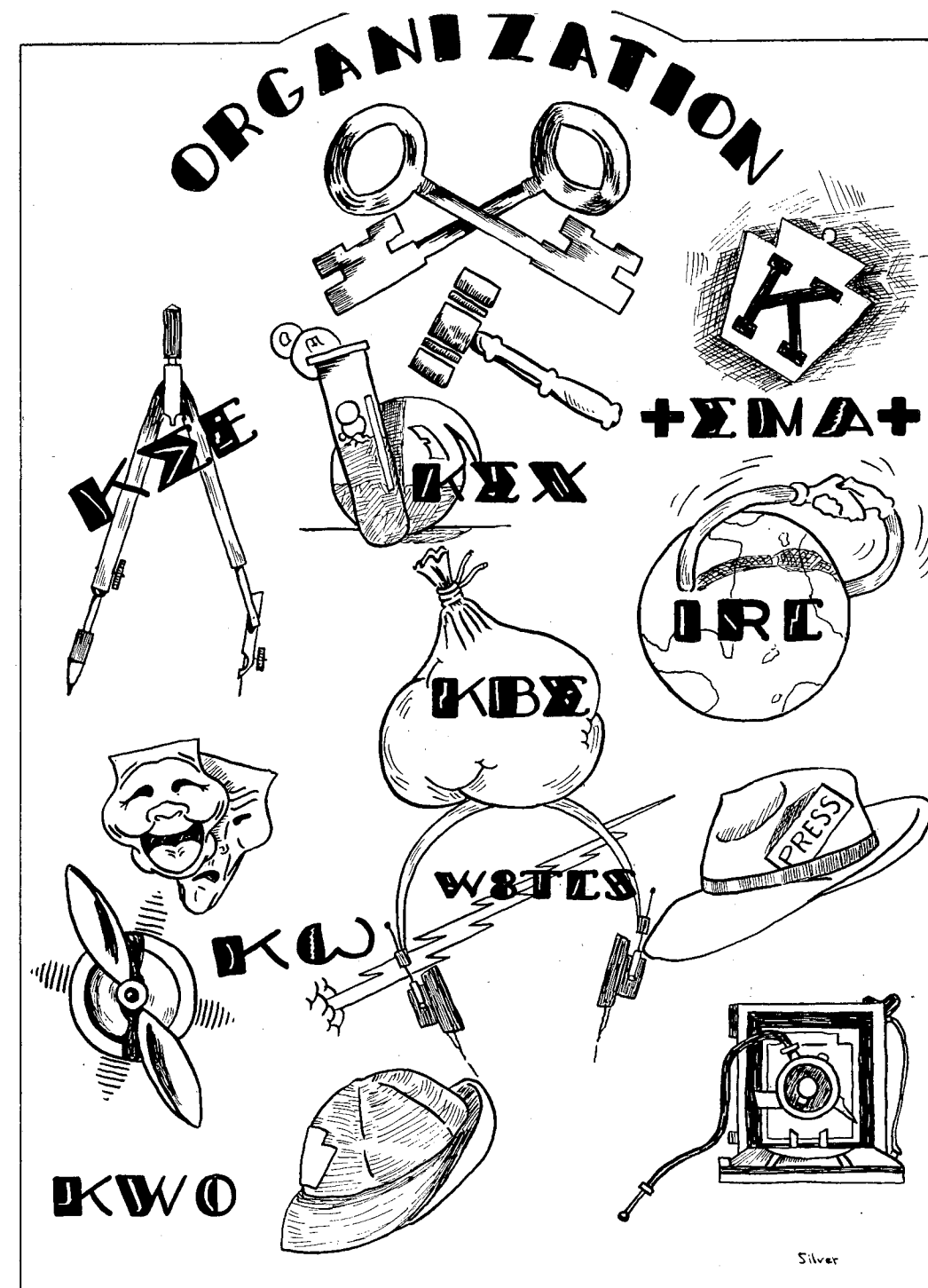
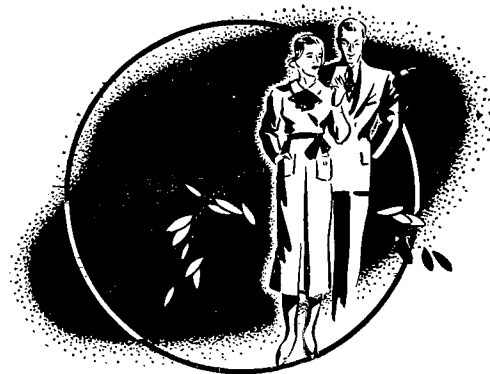


Cottage card fiends in action . . . Sadie Hawkins Day with Garford on the business end of the jug . . . Two little country slickers, Smith and Sprout.



Lover's Lane . . . Weigh up in Capwell Hall — Gillette and Lehr . . . The library, quiet for once. Homeward bound with Mr. Martz's miracle.

# Our Extra-Curricular Activities







Front row, l. to r., Giddings, Keller, Colovos, H. Watkins, Wilensky; second row, l. to r., Gillespie, Judge, Foster (Business Manager), Thurston (Editor), E. Watkins, Baer, McAndrew; third row, l. to r., MacArt, Endelman, Vaughan, Silverstein, Olevich, Hall, Pappson, Lepri, Lloyd.

## NOKOMIAN STAFF

OUR minds are so constructed that we remember "none but the sunny hours." One day of sunshine on the campus makes us forget a week of rain. One good mark makes us forget three poor ones. With graduation the difficulties of Freshman week will be forgotten, and only the remembrance of the fun of "hazing" will remain. It is the purpose of the NOKOMIAN to record the sunny hours. We hope it will remind you of the busy days spent at Keystone: the buildings, the teachers, your studies, your activities and your friends. We hope it will remind you of the happy days spent down by the Nokomis, the winding creek which beautifies the back campus, and in whose honor this yearbook is named.

All members of the NOKOMIAN staff have contributed of their time and effort to make the book a success and we, of the staff, wish to thank faculty advisers Dean Wilbur L. Williams and Irving A. Spalding, Jr., for their aid, encouragement, co-operation and work.

.... We give you the NOKOMIAN for 1940. We hope that it hits the high spots of your college life. We hope that it will remind you of "none but the sunny hours."

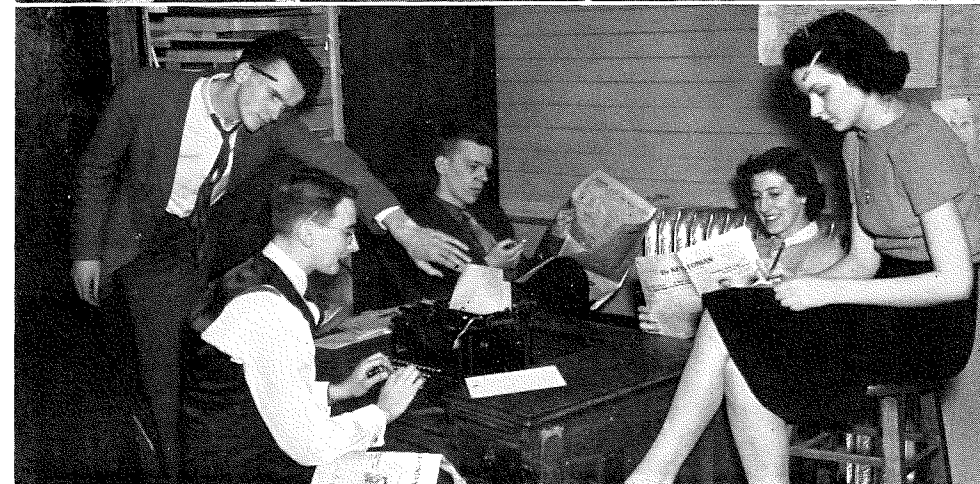
## KEYSTONIAN STAFF

WITH the aid of a staff of alert newshounds, a capable editorial board, and two excellent faculty advisers, the KEYSTONIAN for 1939-1940 started slowly, improved rapidly, and proved that a college newspaper can be something besides a method of spreading gossip and insignificant news. The "Old Man of the Mountain" column was dropped altogether, and in its place were substituted other features which reflected a higher editorial policy.

The efforts to make the paper a better one were not in vain, for the KEYSTONIAN was awarded a third prize in the general division, and a first in the typography division, at the Columbia Scholastic Press Conference in New York. Factors which contributed to the paper's success were Editor Keller's features and editorials, and Allan MacArt's coverage of Keystone sports events. Among its accomplishments, the KEYSTONIAN can boast of sponsoring "Sadie Hawkins Day;" of a prominent place in the Columbia Conference; and of the addition of many new columns to the feature page.



First row, l. to r., Endelman, Wall, MacArt, Thurston, H. Watkins, Keller (Editor); second row, l. to r., Gillespie, Judge, Evans, G. Williams, E. Watkins, Floyd, J. McAndrew; third row, l. to r., Gordon, Bartels, Miller, Ruth Smith, Olevich, Heebner, Coolbaugh, Pappson, Wilensky; fourth row, l. to r., Silverstein, Hall, Maholchic, Lepri, Huber, Foster, Russ.





## TRIBUNAL

THE ten sophomores who make up the Tribunal are, perhaps, the most feared group on the Keystone campus.

This organization, whose duty is to supervise the early activities of the Freshman class, performs three functions: First, it initiates the lowly newcomers into the mysteries of college life; second, it inculcates in the underclassmen a strong and lasting love for their superiors, the Sophomores; and, third, it binds the freshmen into a unified, coherent, brotherly group. That these benefits are not appreciated nor understood until one freshman class becomes sophomore is only to be expected.

This year, after a little agitation on the part of a few campus leaders, the rules were changed somewhat. Instead of the stringent regulations which have been the bane of every incoming class so far, a greatly modified and improved set of laws will go into effect next September. It is hoped that, even though the new rules will not extend over so long a period of time as did the former ones, they will serve the same purpose as did their predecessors.



Seated, first row, l. to r., Baer, Sabbott, Mathias, Fitze; second row, Rippon, Figliomene, Alice Wood, Lane; third row, J. T. Smith, Harold Watkins.

Front row, l. to r., Burns, Weber, Barclay, Wilcox, Sanker; second row, l. to r., Watkins, Gillespie, J. S. Smith, Gibbons.



## STUDENT COUNCIL

KEYSTONE students are encouraged to govern themselves. The Student Council is a legislative and judicial body composed of students representing the freshmen and sophomore classes. Members are elected each year by a popular vote of the student body. The council meets regularly twice a month, and when necessary special meetings are called. The purpose of the organization is to direct student activities, maintain good order, and encourage self-control, courtesy, and responsibility.

The sophomore class chose Charles Barclay, Mary Gibbons, Luther Keller II, Harold Watkins, and Ruth Weber. The freshmen elected Barbara Burns, Florence Gillespie, Stanley Lawrence, Charles Sanker, James S. Smith, and John Wilcox. Charles Barclay was elected Chairman, and Ruth Weber appointed secretary. The Faculty Adviser is Acting President, Sterling E. Hess.

This spring the council members assisted in the administration of the annual Career Forum and May Day exercises. The Student Council has functioned very efficiently and has proved that it is a valuable and necessary organization on the Keystone campus.







Left to right, Burns, Sobbott, Sprout.

## WOMEN'S ORGANIZATION

THE Keystone Women's Organization, or K. W. O. as it is more briefly and familiarly known, is an association promoting sociability and fellowship among the women at Keystone. Miss Lucile Scheuer, Dean of Women, is the faculty adviser. Aimee Sobbott was elected president of the K. W. O. at the organization's first business meeting in October. Other officers elected were: Barbara Burns, vice-president; Dorothy Sprout, secretary; and Florence Kellow, treasurer.

Members of the organization have enjoyed a number of activities during the year. The first gathering took place during the opening week of college when the sophomores gave a tea for the incoming freshmen. Members of the K. W. O. served on the reception committee for the annual Parent's Day, held Saturday, September 30. The following month, the boarders were hostesses for a get-together, in the form of a Weenie Roast, on the back campus. In October, Elma Hollenberg was chairman of a very successful Hallow'een party. Just before the Christmas holidays, the girls and their mothers enjoyed a reading, "Mamba's Daughter," by Mrs. Salo Friedwald. Billie Lane was general chairman of the tea which followed the reading. In February, Ruth Smith was chairman of the girl's Military Ball. Dancing and games were preceded by a six o'clock supper. The annual K. W. O. Kapers in April, with Arlene Fitze as chairman, was a unique affair. The theme of the dance was a carnival. Balloons were used as decorations, and the idea of roundness was carried out in murals painted by the students. This spring dance brought the K. W. O. activities to a successful close.

## VARSITY "K" CLUB

COMPOSED of athletes who have earned their Varsity Letter in sports, the Varsity "K" Club is one of the oldest and most popular of Keystone organizations. Organized in 1934, it has grown steadily every year. This organization contributes greatly to the social as well as the athletic life of the college, sponsoring numerous events during the year.

This year the Varsity "K" Club sponsored an intramural basketball tournament, donating a large trophy and smaller individual trophies to the winning team.

The officers of the club are: President, Joseph Lepri; Vice-President, Harold P. Watkins; Treasurer, Bruce Bloxham; and Secretary, Michael Figliomene.

First row, l. to r., Green, Lloyd, Bloxham, McAndrew, Azar (Adviser); second row, l. to r., Wagner, Evans, Rippon, Lawrence, Lodovici, Silverstein; third row, l. to r., Fordham, Wasilchak, Figliomene, Giddings, O'Malley, Maholchic; fourth row, Mathias, Chivers, Watkins, Lepri.





## THE KEYS

THE Keys Society is the honorary men's society on the campus. Its members consist of the ten sophomore Key-men at Keystone, who, by their activities in college affairs, have attained the highest number of points for these activities during their freshman year.

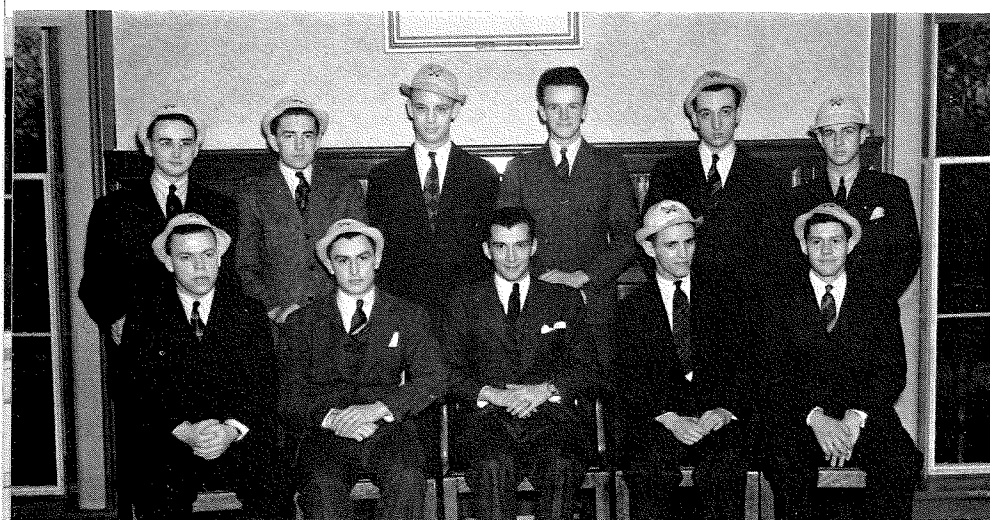
These points are awarded according to the established standard of the society; first, for scholarship, and second, for extra-curricular activity. These may be athletics, either varsity, inter-mural, or intra-mural; clubs; or any other organization on the campus. Special credit is given to class officers and officers of clubs.

The primary requisites for Keys members are character and honesty, over and above the more concrete indications of grades and organization activity.

The Keys meets bi-weekly for the purpose of recording the points of the first-year men, and at the end of the class year these points are tabulated, and the white Keys hat is placed on the brow of each of the ten highest ranking freshmen during the official induction which is part of the Commencement Day ceremonies.

No social affairs of any kind are conducted by the society, other than the internal activities of the organization. No officers are elected, the members serving as chairman and secretary of each meeting in alphabetic order.

This year, nine of the thirteen outstanding student offices on the campus are held by members of the Keys.



Sitting, 1. to r., Watkins, Mathias, Benjamin Trapani (Adviser), Evan Williams, Barclay; standing, 1. to r., Thurston, Evans, Russ, MacArt, Foster, Lehr.



Seated, 1. to r., James S. Smith, Mathias, Evan Williams, Ghirelli; standing, 1. to r., Coffman, Lehr, Evans.

## CAPWELL STEWARDS

WHEN, in November, 1938, the new Capwell Science Hall was opened, an organization was formed whose duties were to govern Capwell Hall. In that year, the ten Capwell Stewards, as that organization is called, were appointed by the president of the Student Council and Doctor Strelzoff. In September, 1939, however, the policy of appointment was discarded. Since the engineering students make more use of Capwell Hall than any of the other students, it was decided to allow the Engineering Society to elect the new members.

The duties of the Stewards, who are under the guidance of Doctor Strelzoff and Mr. Trapani, are to maintain order, to look after the cleanliness of the building, and to report any misuse of privileges to the faculty advisors. Each Steward is assigned a particular duty by Steward President, Evan Williams. If the steward carries out his duties properly, he is retained for the remainder of his stay here. The Head Steward himself examines the buildings regularly to see that these duties are properly carried out.

It is, then, to these men that we owe our thanks for the fine condition in which Capwell Science Hall is kept.







Front row, 1. to r., Roberts, McHale, Davidson, McAndrew; second row, 1. to r., Dr. F. B. Davies (Adviser), Hollenberg, Warrick.

## SIGMA MU ALPHA

THE high standards required for membership in this honorary organization for the Medical Secretaries of the college make it a very highly recognized one. It has succeeded very well in its original purpose, which is to promote higher scholastic standing and organization among the medical secretaries, since only those girls who attain a certain scholastic standing, who participate in social activities, and who possess desirable character, may belong to the club.

Even more, however, than supplying this incentive for scholastic ability, the club supplies social recreation for its members. It is one of the most active organizations on the campus, sponsoring a number of teas during the year for the whole department as well as the secretaries themselves. Entertaining lectures by prominent physicians, technicians, and bacteriologists are heard by the members.

Towards the end of each year, members from the entering class are chosen by Dr. Frederick B. Davies, faculty advisor, along with the members of the organization. The former members hold rush parties and initiations to introduce their successors into the Sigma Mu Alpha.



## ORANGE AND BLUE

THE Orange and Blue club, Keystone's honorary athletic society for women, is made up of students who have won the Varsity "K" or a minor "K." Aimee Sobbott capably filled the office of president. Other officers elected were: Jean Evans, vice-president; Jean Gordon, secretary-treasurer; and Evelyn Baer, reporter. Members of the organization sold candy and hot dogs at the football games, and from the treasury purchased crew hats with a Keystone emblem. The social event of the year sponsored by the club was the "Mistletoe Ball," a highly successful affair.

Initiation parties were held at the end of the hockey and basketball seasons. Hockey pledges were Helen Bartels, Mary Gibbons, Romaine Finn, Doris Pizer, Florence Tomillo, Claire Wydeen, Wanda Wagner, and Jean Vaughan. Basketball pledges were Ruth Corkwell, Arlene Fitze, Lois Gardner, Margaret Hinkley, Mary Smith, and Elizabeth Watkins. Alice Patterson, class of 1939, was elected an honorary member of the organization.

The Orange and Blue has had a very successful year. Doris Smith is the faculty adviser.

First row, 1. to r., Mary Smith, Watkins, Roberts, Tomillo, Pizer, Wagner; second row, 1. to r., Lane, Gordon, Baer, Doris Smith (Adviser), Sobbott, Evans, McAndrew; third row, 1. to r., Finn, Wydeen, Bartels, Gardner, Hinkley, Vaughan, Corkwell, Fitze.





*Off for Rutgers!*

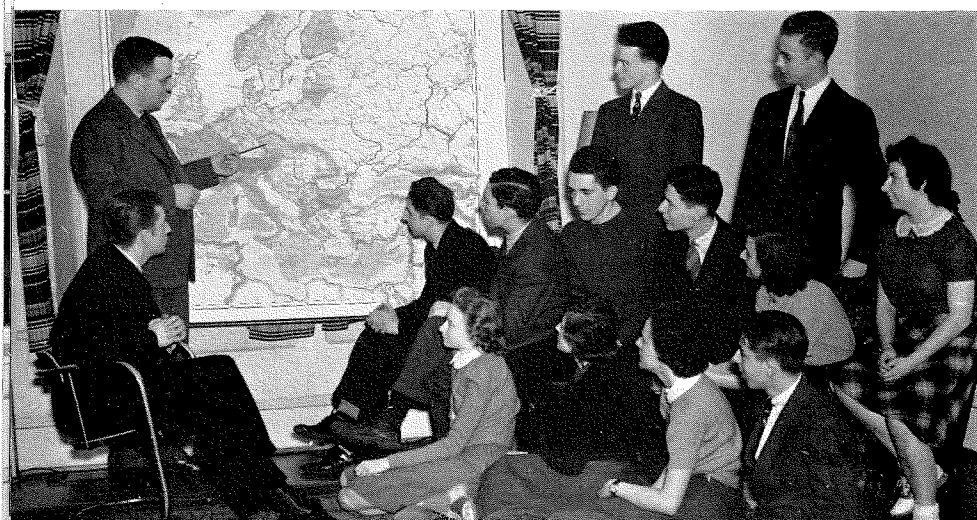
## INTERNATIONAL RELATIONS CLUB

THIS year the International Relations Club played the most active part in school activities since its induction as an organization several years ago. The purpose of this group is to further interest in the realm of international affairs, not only among its members, but the student body as a whole.

Annually, the Club members attend an inter-collegiate regional I. R. C. conference which last December was held at the New Jersey College for Women at which almost a hundred colleges were represented. The Keystone delegation of 10 members, accompanied by Professor R. M. Lightfoot, faculty advisor, was the largest group attending from one college.

The Club conducted a school poll on international, national, and local affairs which proved very interesting. The organization received considerable publicity and also a personal reply from the presidential candidate who received the students' support.

Officers for the year were: Allan MacArt, President; David Russ, Vice-President; Florence Gillespie, Secretary-Treasurer.



At left, seated, Stone; standing, R. M. Lightfoot, Jr. (Advisor). First row, 1. to r., Bartels, Gillespie, Davidson, Sankler; seated, 1. to r., Singlevich, Endelman, Huber, Boughner, Olevich, Witter; standing, 1. to r., MacArt, Russ.



## KAPPA SIGMA EPSILON

THE Keystone Society of Engineers was primarily organized to promote closer friendship among the engineers.

In this aim, the "slip-stick artists" have accomplished much. Everyone on the campus has noted with envy the way in which the engineers function as a single unit in accomplishing whatever they set out to do.

To prove their versatility, they engaged in intramural athletics—basketball and softball. Their efforts were not fruitless, for the engineers won the softball championship in 1939, and were in the basketball race all the way.

Among the outstanding events of the college year were two engineer-sponsored events: the Engineers' Dance, and the field trip to New Jersey.

That this group is prominent in Keystone affairs is undeniable. They are represented on the Student Council, in the Keys, Varsity "K," and many other organizations and activities. With these records to point to, the engineers can truly say that they are gentlemen, scholars, and leaders in campus affairs. Ever their motto is: Forward Engineers!







## GLEE CLUB

OFFERING to students a means of cultivating their musical talents and of satisfying their inherent love for singing, the Glee Club, under the direction of Professor H. Haddon Dudley, has attracted a large number of students during the past year. The freshmen seemed to be the most musically inclined, for they constituted the greater number of the forty members.

During the year the organization had charge of, and assisted at, several of the college programs. At the annual presentations of the Masque and Harlequin, the Glee Club Chorus and the male quartet of the group rendered several selections before the plays and during intermission.

This year, for the first time, every member of the group had the opportunity of taking the Seashore Musical Ability Test, which determines a person's approximate aptitude for music in regard to harmony, rhythm, pitch, time, and tonal memory. It is interesting to note that this test is given to all aspiring musicians and singers in musical circles everywhere.

The Concert Group also presented several concerts before students of surrounding town schools.

By the enthusiasm shown in Glee Club work, the group has proven that it is one of the most worthwhile organizations in the college, for the members are those who sing for the enjoyment of singing and those who wish to develop this talent for music. They have also shown that in the school there exists an appreciation for finer and a more lasting type of music.

First row, 1. to r., Kocher, Van Nort, H. Watkins, Giddings, Lewis, Wilcox; second row, 1. to r., Witter, Zug, Wonacott, Roberts, Vera Hoffman, Parise, Orlowski, O'Hara; third row, 1. to r., Ruth Smith, Hall, Russ, H. Haddon Dudley (Director), Payne, Coolbaugh, Kosydar; fourth row, 1. to r., Tembey, Hallock, Wells, Olevich, Papson, Llewellyn, Nancy Williams; fifth row, 1. to r., Gardner, MacArt, Gillette, Garford Williams, Stone, McClave, Lepri, Rippon, Lloyd.



Front row, 1. to r., J. T. Smith, Stull, Sophie Colovos, Butchko, Dr. J. A. Strellzoff (ground instruction), Ryder, "Andy" White (flight instruction); back row, 1. to r., Kollmorgen, Lipman, Kelson, Coolbaugh, George Colovos.

## AVIATION CLUB

"KEYSTONE WINGS," a newly organized group which is a chapter of the National Aeronautic Association, was formed in November, 1939. It is composed of students taking the Aviation Course.

The objectives of the Club are: To interest students of Keystone in the science of aeronautics; to promote college flying generally; and to aid insofar as possible the program and purposes of the National Aeronautic Association, looking toward the continual advancement of aviation. The Club has as its flying base the Scranton Airport, and there the fledglings have learned the intricacies of lanes and flying. Unlike other campus groups, "Keystone Wings" has had no regular meetings and is bound together solely because of the common interest of its members in flying.





## DEBATING SOCIETY

THE Debating Society, under the direction of Mr. Robert Mitchell Lightfoot, Jr., engaged, this season, in a number of inter-collegiate debates.

The question for discussion was, "Resolved: That the United States should follow a policy of strict isolation toward all nations outside the Western Hemisphere engaged in armed international and civil conflict." The society had both negative and affirmative teams.

Members of the team had two debates with Penn State, and debates with the University of Scranton, Bucknell, Muhlenberg, Bucknell Junior College, and the Penn State Undergraduate Center at Hazleton. All debates, except that with the University of Scranton, were non-decision.

Jean Marie Judge was manager of the team which was composed of Marie Cetta, Bernard Endelman, Betty Jane Floyd, Florence Gillespie, Robert McClave, Charles Sanker, Walter Singlevich, and Barto Stone.



Foreground, Floyd, R. M. Lightfoot, Jr. (Coach); seated, l. to r., Stone, Gillespie, Sanker; standing, l. to r., Cetta, Endelman, Singlevich.



## MASQUE AND HARLEQUIN

WITH the growing interest of the student body in dramatics as an incentive, Masque and Harlequin, under the supervision of Miss Lucile M. Scheuer, has completed one of its most successful seasons. Not only was great interest displayed by the thespians themselves, but by all other departments connected with the production of plays. The acting, as well as make-up, lighting, properties, publicity, and costuming committees, was well represented by talented and experienced students from both the sophomore and freshmen groups.

In December the group presented three plays which dealt with different types of dramatics. Excellent performances were turned in by all members of each cast. Those participating in the comedy, "Quiet, Please," were: Edward Brandt, Arlene Fitze, Betty Jane Floyd, Frances Orlowski, Charles Sanker, and Norma Wonnacott. The cast that made up the farce, "Mrs. Harper's Bazaar," consisted of: Barbara Burns, Lois Gardner, Florence Gillespie, Dorothy Matthews, Marie Pappson, Evelyn Sailer, Aimee Sobott, and Jean Zug. The tragedy, "Smoke Screen," was ably presented by: Robert Huber, Jean McAndrew, and Barto Stone.

"A Bill of Divorcement" was the annual spring play for this year. It has been successfully portrayed for many years on the screen and stage. Once more, every character has been interestingly recreated through the talented members of Masque and Harlequin. The cast which presented the play was made up of: George Campbell, Marie Coolbaugh, Arlene Fitze, Clarence Fitze, Robert Huber, James Smith, Aimee Sobott, Barto Stone, and Norma Wonnacott.







First row, l. to r., Wells, Ruth Smith, O'Hara, Orlowski, Coolbaugh, Llewellyn; second row, l. to r., Wilcox, Kocher, VanNort, H. Watkins, Giddings, MacArt; third row, l. to r., Tembey, Gardner, Lehr, Roberts, Kosydar, Papson, Olevich; fourth row, l. to r., Foster, Hallock, Gillette, Lewis, Hall, Garford Williams, Russ, Stone, Lloyd, Lepri, Rippon, Nancy Williams.

## SECRETARIAL CLUB

THE Secretarial Club is an organization for all secretarial, medical secretarial, and general business students whose purpose of the club is to help members understand some of the functions of the business world, and to acquaint them with local industrial establishments. It attains its purpose by field trips which include visits to the International Correspondence School, W.G.B.I. Broadcasting Studio, the Scranton Times, Marvine Colliery, Scranton Lace Works, and other business organizations. The Club also assists terminal students in gaining employment.

Social affairs, including teas and lectures by people prominent in the business world, are among the many Club activities. This year the Club held its first dance which proved to be a tremendous success.

The organization, under the efficient leadership of Mr. Peter P. Stapay, has been one of the most active and beneficial clubs on the campus.

Officers of the Club are: Ruth Weber, President; Freida Gutheinz, Vice-President; Wilmine Lane, Secretary; Elma Hollenberg, Treasurer; and Jean Evans, Reporter.

Membership in the Club this year was almost double that of other years.

## CONCERT ASSOCIATION

THIS year the Concert Association has been functioning largely as a supplement of the Glee Club. It has been most active in the Concert Chorus, members of which were chosen from those exhibiting marked ability in music appreciation after the Seashore Musical Ability test given by Professor Dudley.

The group presented its only formal concert of the year in the College Auditorium in the early spring. Several selections, both classical and semi-classical, were presented by the chorus. Besides the group singing, there were solos given by Barbara Roberts, Ruth Smith, and Shirley Hallock. The light touch of the evening was added by the male quartet which rendered several musical favorites.

The chorus also assisted at several programs in the schools of surrounding towns.

The aim of the group in previous years was primarily to develop the instrumental interests of the students, but this year they have attempted to develop the vocal interests as well.





## RADIO CLUB

THE Radio Club is one of the most popular organizations on the Keystone campus. Headquarters of the licensed amateur radio station, W8TCS, are on the fourth floor of Harris Hall.

The first meeting of the year was held early in September when the following officers were elected: Stephen Quackenbush, President; Eugene McAndrew, Vice-president; and Florence Gillespie, Secretary-Treasurer. Other members of the organization are: Ruth Corkwell, Marjorie DeWitt, John Moffatt, Fred Kollmorgen and Henry Otto.

Professor Sterling E. Hess is club adviser and operator of the station. Code classes were conducted so that some of the members might qualify to obtain their own amateur licenses, and become regular "Hams." The college, and members of the Radio Club, presented a transmitter to the station.

Because of the present European conflict, foreign stations have been closed. Members have experienced the thrill and satisfaction, however, of "calling" stations here in America.



Seated, 1. to r., McAndrew, Otto, S. E. Hess (Adviser); standing, 1. to r., Moffat, Kollmorgen, Corkwell, DeWitt, Gillespie.



Front row, 1. to r., Sailer, Capwell, Schwartz; seated, 1. to r., Mary L. Presper (Adviser), Bull, Wood, Hoffman, Gardner, Colovos; standing, 1. to r., Horvitch, Finn, Wonnacott.

## HOME ECONOMICS CLUB

THE E. P. P. better known as the Home Economics Club, is one of the younger additions to Keystone's many organizations, having been formed at the beginning of the college year.

Alice Wood is president of the group and Marian Capwell is secretary-treasurer, while Rebecca Bull serves as club reporter. Miss Mary Presper is the club's advisor.

Among its present eleven members are three sophomores: Sophie Colovos, Rebecca Bull, and Alice Wood, and eight freshmen: Marian Capwell, Romaine Finn, Lois Gardner, Vera Hoffman, Sylvia Horvitch, Evelyn Sailer, Tema Schwartz, and Norma Wonnacott.

The most outstanding event for the Home "Ecs" was a field trip which lasted two days, Friday and Saturday, May 3 and 4. The girls visited the Home Economic buildings at Mansfield College, Cornell University, and Elmira College. Due to the success of this trip, the club is planning future field trips.

The E. P. P. is a definite asset to Keystone, inasmuch as it has furnished capable hostesses for teas, and other social affairs held on the campus throughout the year.





## KAPPA SIGMA CHI

THE newest of the newer clubs that has sprung up on the campus this year is the Kappa Sigma Chi, Keystone's Scientific Society, organized in October.

This club is an intellectual organization, whose main purpose is to stimulate interest in science, and show the interrelation of all the sciences. Also, it aids the student in getting a practical view of science and its application by periodical field trips to the various industrial plants. The club is divided into various scientific departments whose function is to present before the group all that is new in their particular branch of science, and to give exhibitions relating to their field.

The club is growing rapidly, with the present membership composed of forty chartered members. The officers of this organization are: President, Walter Singlevich; Vice-President, Mary Gibbons; Secretary, Evelyn M. Baer; and Treasurer, John Klein.



## KAPPA BETA SIGMA

KAPPA Beta Sigma, Keystone Business Society, was formed to promote friendship and association among the students in business administration. The club prospered with the helpful advice of Professor Gildersleeve.

In November the sophomore members of the club initiated the freshman members. The initiation was very humorous and entertaining—especially to the freshmen. The members obtained green crew hats upon which the gold club emblem was placed.

The club was active in athletics, placing teams in the basketball and baseball intra-mural leagues.

In April the club sponsored a "Farm Dance" which was one of the most enjoyable and successful dances of the school year. A sliding board was used to enter the dance, piles of straw were used to sit on, and live chickens and a live pig were used to furnish atmosphere.

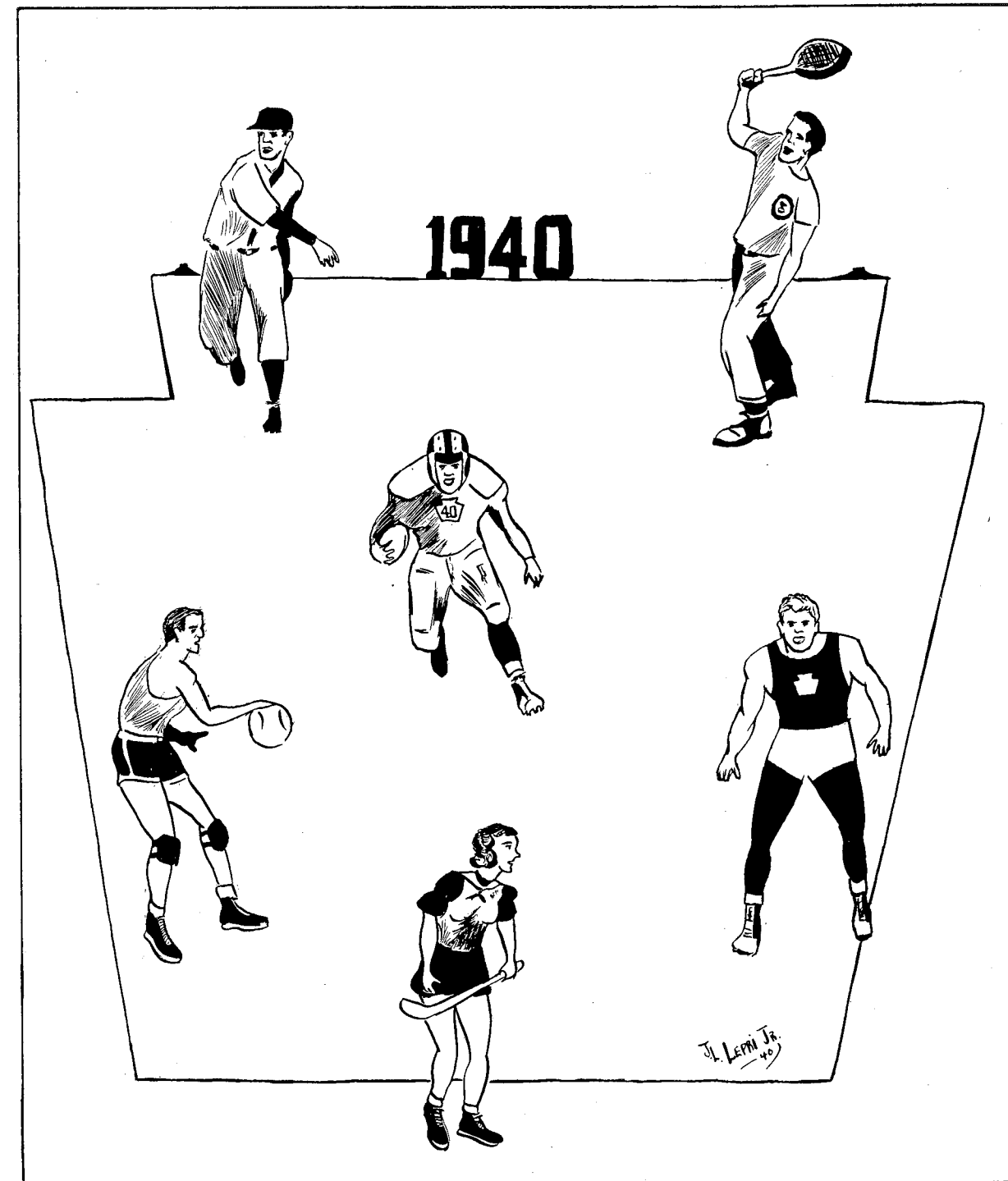
For a newly organized club, the business society had a highly successful season.

The officers were: William Kelson, President; James Davis, Vice-President; Donald Foster, Secretary; Ronald Lloyd, Treasurer; and Jack Wilcox, Chairman of the Ways and Means Committee.

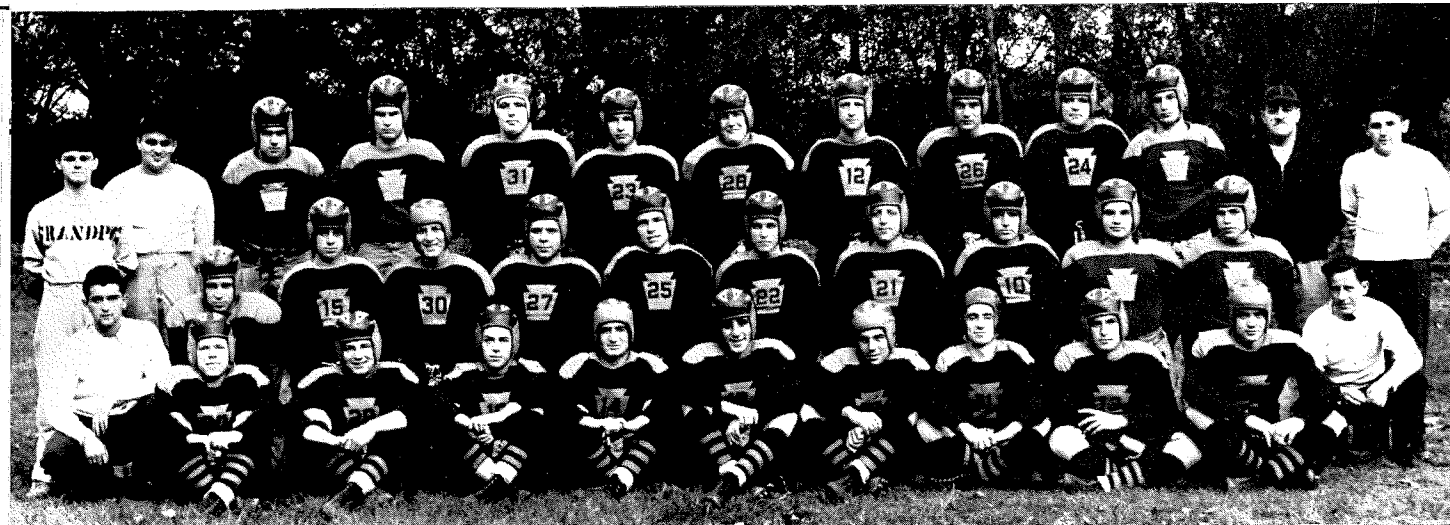
Front row, l. to r., Lloyd, Fitze, Otto, Huber, Yeager, H. Watkins, Wilcox; second row, l. to r., Lepri, Swindlehurst, Lewis, Burton H. Gildersleeve (Adviser), Kollmorgen, Wall, Maholchic; third row, l. to r., Wilensky, Wagner, Joel, Lynch, Boughner, O'Malley, Davis, Hazard, Foster, Kelson.



The Sports in Which We Participate







First row, l to r., Watkins, Golo, Wasilchak, Lodovici, Figliomene, Sandone, Pengelly, Mathias, Hoffman; second row, l. to r., Ghirelli (Assistant Manager), Bloxham, Chivers, Green, Briggs, Lloyd, Anderson, Wagner, Lawrence, Wilensky, Gebert, Weiber (Assistant Manager); third row, l. to r., Giddings, (Manager), George Azar, (Coach), Conrad, Norris, O'Malley, Massaker, Rippon, Silverstein, Maholchic, Lepri, Weigand, Samuel A. Lee (Director, Physical Education), and Reese (Assistant Manager).

## Gridmen Succumb to Strong Opposition

THE Orange and Blue men waged a losing battle against superior force, might, and numbers through the greatest part of their six game "suicide schedule" last Fall. Since Alfred and Bloomsburg Frosh, in addition to Susquehanna and Cazenovia proved comparatively easy prey during the previous season, these schools were dropped from the schedule and replaced by more formidable opposition. Blair Academy, Cornell U. Frosh, and East Stroudsburg Jay Vees were the newcomers to the sports menu, excepting the latter Stroud team which faced Keystone several years ago.

Hold-overs from previous years' squads plus the aid of some promising newcomers formed a fine aggregation, but the team lacked effective reserve material in attempting to cope with superior forces of the opposition.

## Gridmen Succumb to Strong Opposition---continued

Of the six contests played, the "Little Giants" managed to tack up two victories as against twice as many losses. Showing an almost complete reversal in points garnered compared to the totals of the previous season, the Keymen scored 40 as against 24 points for their adversaries.

As usual, injuries and illness haunted the team throughout the season, and, no doubt, they were a contributing factor to the disastrous campaign. Nevertheless, the team, and Coaches Azar and Lee deserve no small amount of the credit for the effort and fight they put forth against the existing odds. Trainer-Manager Giddings and his group deserve great credit for their hard work and faithfulness. Bill Lodovici, team captain, also deserves credit for his work.

Burton H. Gildersleeve (Tennis); Samuel A. Lee (Director, Physical Education and Athletics; Basketball, Baseball); Doris Smith (Hockey, Basketball); George Azar, Jr. (Football, Wrestling).





*Cornell Frosh 34---Keystone 0*

The Keystone punting attack which featured the toework of Frank Maholchic, began early in the game, and caught the Cornell boys unaware. Excepting the early moments, the game was all Cornell as the score may indicate. The opponents' 200-pound line and 190-pound backfield, in addition to strings of competent reserve material, soon got the best of Keystone. The "never say die" attitude, nevertheless, persisted in our team, and, despite the score, the boys made a definite impression—and not in the ground!

*Syracuse Frosh B, 0—Keystone 13*

Chances for victory seemed few, but an inspired Keystone eleven tripped a highly touted Syracuse B squad on the local field. A great performance was turned in by the whole team but the work of Lodovici, captain, Mathias, Sandone, Golo, and Maholchic stood out. Razzle-dazzle play accounted indirectly for both the scores. A pass by Maholchic to Lodovici, who in turn lateraled to Golo, accounted for the initial score of the game. Later, Lodovici received a pass, scored, and sewed up the game for Keystone.

## On the

### *Here Lies the Tale*

*Blair Academy 26---Keystone 6*

Defeat struck early against the Keystone boys, it being administered in the initial game of the season by the strong troupe from Blairtown. The "Preppers" befuddled the home guard during the early portion of the struggle. Soon after the opening kick-off, the Jersey men pushed over six points, with a conversion following. Keystone's only tally came late in the second quarter, when two quick passes from Lodovici to Golo and then one to Figliomene put the Keystone men on the Blair 7. Lodovici plunged for the only "Little Giant" score of the day.

## Gridiron!

### *Here Lies the Tale---continued*

*Bucknell Frosh 25---Keystone 7*

The "Baby Bisons," always good in the mud, proved too stiff competition for our gridmen. Mike Figliomene snared a pass tossed by Maholchic for the only Keystone counter. Coach Azar used every man available, yet this topheavy score was rolled up by our adversaries. The Keystonians emerged a very battered and tired outfit with Captain Lodovici on the casualty list.

*Wyoming Seminary 18---Keystone 7*

Determined not to be broken, Sir Q. Tradition again ruled the master of the historic struggle between the Sem lads and the Keystone boys. Never before was the spirit of the students and the team at a higher pitch, but alas, the millenium failed to take place. The Semsters were the masters in all departments of the game. Two Sem scores came via line bucks made possible through an excellent passing attack; the other 6 points were scored on a toss into the end zone. Keystone's only score came in the twilight moments, as Golo, Maholchic, and Sandone pounded the Sem line, and, after a discontinued threat, Sandone pushed over the double stripe for the touch-down. Massaker converted for the extra point. Thus ended the game and Seminary continued its fifty-three-year domination.

*East Stroudsburg Frosh 7---Keystone 21*

Although minus the services of Lodovici and several injured linemen, the "Little Giants" completely outplayed and outmanoeuvred the Freshmen. Keystone registered in the first, second, and fourth quarters in addition to a safety in the third. The "Teachers'" happy moments also came in the third quarter by the route of a long pass and a line buck. Maholchic accounted for a dozen of the points while Golo, after an interception by Mathias, carried over the last score of the year.







Kneeling, l. to r., Watkins, Quinney, Davenport, Edward Evans (Captain), Lawrence, J. T. Smith, Tench, Waltzer, Jones. Standing, l. to r., Samuel A. Lee (Coach), Fitze (Manager).

## The Basketball Season

**F**AILING to win a single encounter, the "Little Giants" basketball squad had the most disastrous season ever experienced by a Keystone team. The lack of seasoned performers, coupled with the small amount of practice hours allotted, were, perhaps, the main causes of this poor showing.

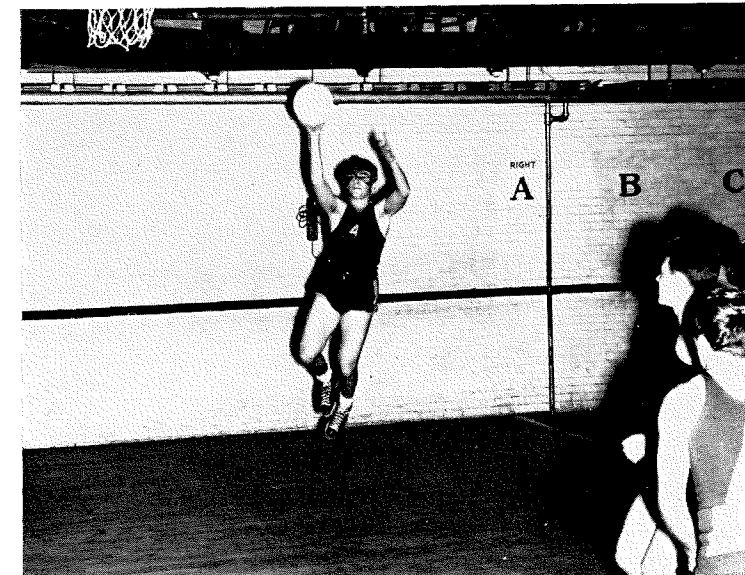
Most of the boys on the squad had never played basketball until they came to Keystone, and the competition which they received from larger colleges was just too much for them to handle. In several of the games the boys seemed on the verge of victory, only to lose because the terrific pace had its telling effect on the unexperienced performers and the strain made them buckle in the middle.



## The Basketball Season---continued

Yeoman work was turned in by Ted Evans who finished third in the league scoring race. Teddy was the mainstay of the Keystone offense all during the season; that his sterling work was appreciated is indicated by the fact that this modest fellow was picked on the league all-star team over some of the players on the more successful teams.

Everything taken into consideration, we feel that although the season was bad, the sense of sportsmanship instilled in the boys, and the general good-will which they spread on their trips, more than made up for their poor showing.





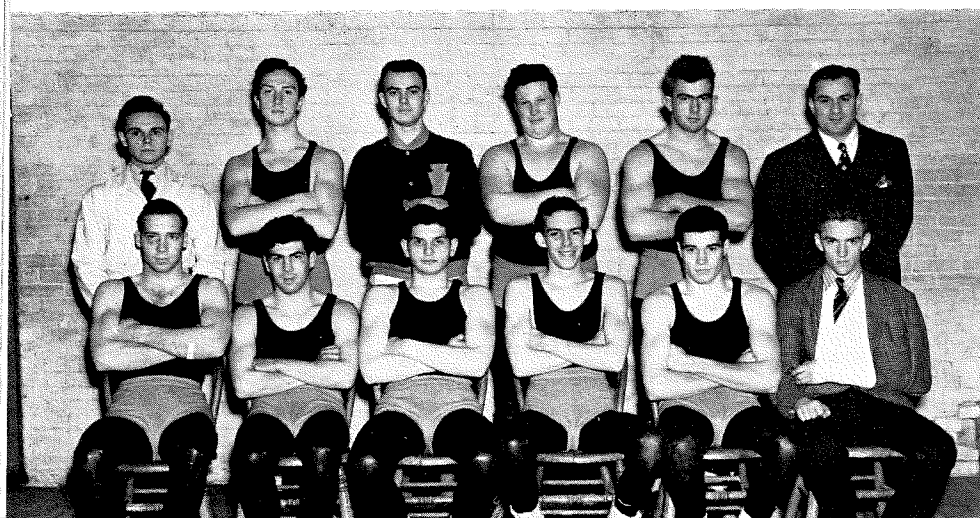
## The Wrestling Season

ENJOYING a somewhat successful season, Keystone's wrestling squad proved themselves worthy opponents for the opposition which they encountered. The groaners, ably led by the Moylan sisters of wrestling—Phil Rippon and Bruce Bloxham—whose close harmony was incomparable, split even in eight encounters over as tough opposition as any schedule could command.

Working with many inexperienced men, Coach Azar managed to turn out a well-knit outfit, and with determination born of necessity, the boys really worked. (Work is necessary in this strenuous occupation or some playful opponent will gleefully push your profile in a notch or two.)

Both Rippon and Bloxham finished the season undefeated, with Rippon gaining the edge over Bloxham in the matter of points scored. It is interesting to note that both boys broke the existing point-getting record which was held by Charley Johnson, former Little Giant's star and captain.

Much can be said of the excellent work turned by "Bull" Conrad and Nick "Ukey" Sandone. Both boys were raw material when they came, and by hard work they became somewhat polished wrestlers and their excellent work did much toward insuring the success of the season.



Seated, 1. to r., Bloxham (Captain), Sandone, Wilensky, Campbell, Coolbaugh, Frear; standing, 1. to r., Giddings (Manager), Silverstein, Gillette, Rippon, Conrad, Azar, (Coach).

## The Baseball Season

THE 1939 season was a disastrous one for Keystone's baseball team, for out of eight games played, only one was on the "victory" side of the ledger. Perhaps one reason for the poor showing was the inclement weather, which prevented the team from getting the proper amount of batting and fielding practice. Another factor was the presence of three inexperienced men at key positions; second base, shortstop, and third base.

In the first game of the season, the "Little Giants" bowed to Venard, 13-3. The second game saw Keystone lose to Bucknell Junior College, 19-18. Thus it went. In one game after another, the inexperience of the team, plus faulty fielding and poor hitting, caused the losses to increase. Games were dropped to Wyoming Sem., 12-3; Venard, 11-4; Susquehanna, 16-4; Sem. again 6-1 and to Bucknell Junior College, 6-5. In the final game of the season, the "Little Giants" managed to register their first victory, 8-6.

The best game of the season was, undoubtedly, the "Christy Mathewson Day" contest with Bucknell J. C. Perhaps it was the presence of Ernie Quigley, National League umpire, which inspired the players of both teams.

Although the season was not at all successful, it performed the function of training the rookies for the following year, which was awaited with enthusiasm and optimism.





## The Tennis Season

HAUNTED by Keystone's old athletic jinxes—injury and lack of practice—the 1939 tennis team went through a five-game schedule with mediocre success. Hopes for a good year had been high before the season started, but inclement weather prevented Burton H. Gildersleeve from molding a top-notch team. Then, just as the team began to show possibilities, Jack Tilley, Number One man, was injured, and was forced to drop from school. The necessitated change in plans left the team rather upset, and resulted in a record which was, in the words of Coach Gildersleeve, "not as successful as it should have been."

All things considered, the record is not at all poor. Keystone came out on the short end of the score against Susquehanna and Morris Junior College, and notched wins against Cazenovia and Wyoming Seminary, the latter being defeated twice.

The squad was composed of five experienced men and two capable newcomers: Jack Tilley, MacGregor Jones, Robert Johler, Walter Shimer, Robert McClave, John T. Smith, and Allan MacArt. Of these, Tilley, Jones, and Johler were graduated in June, leaving Coach Gildersleeve just a little pessimistic concerning the prospects for 1940.

## GIRLS'

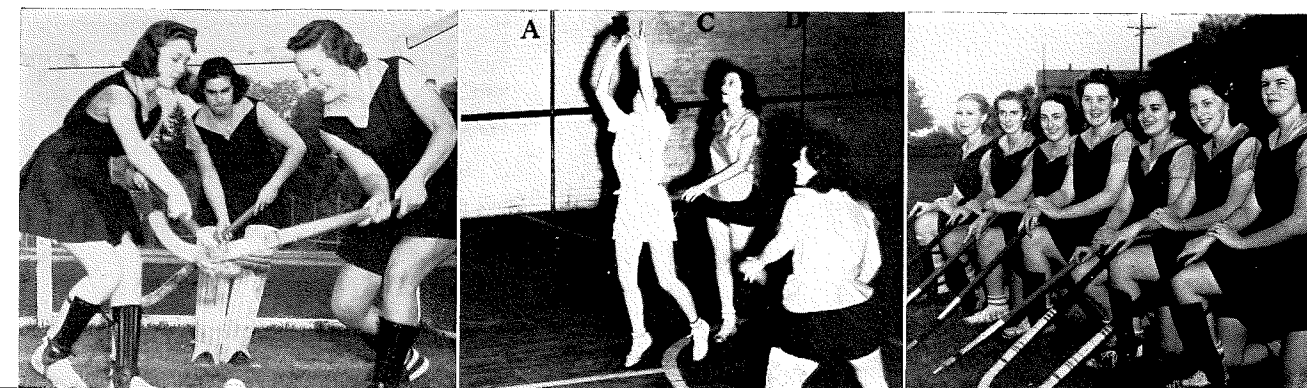


## SPORTS

### GIRLS' BASKETBALL

WITH only Barbara Roberts, Aimee Sobbott, and Ruth Corkwell remaining from the last year's squad, Coach Doris Smith moulded the greatest team that Keystone girls' athletics has ever seen. In the first season from whose schedule high school basketball teams has been excluded, the team won all their games,—an undefeated season for the first time in the history of Junior College. Not only was it an undefeated season, but there were no tie games on the record to detract from the team's glory.

Each game was won by a large margin, so that this squad proved itself to be definitely superior to its competitors. The opponents consisted of Wyo-





## GIRLS' BASKETBALL---continued

ming Seminary, Montrose Girls' School, Stroudsburg State Teachers' College, and Morristown Junior College.

With several capable freshmen remaining for the season next year, things look promising for the girls of the Orange and Blue.

## GIRLS' HOCKEY

The 1939 Hockey season was the most successful in the history of Keystone. Although only five girls remained from the preceding year's team, a fine squad was worked into shape under "Pudgie's" able tutelage. Two wins, four ties, and two defeats, in games played against teams whose members had had a great deal more training than most of Keystone's girls, made it a highly satisfactory season. Evelyn Baer was captain for the season, and Mary Gibbons was manager. Following is a short summary of the individual games:



Sitting, l. to r., Fitze, Wagner, McAndrew; kneeling, l. to r., Corkwell, Finn, Evans, Gardner, Purcell, Sobbott, Pizer, Wydeen; standing, l. to r., Doris Smith (Coach), Payne, Roberts, Ruth Smith, Wieland, Carey, Janet Smith, Hinkley, E. Watkins.

Front row, l. to r., Gordon, Tomillo, Baer, Zug, Wagner, McAndrew, Evans, Heebner (Manager); standing, l. to r., Doris Smith (Coach), Sailer, Wydeen, Pizer, Finn, Lane, Tetlock, Sobbott, Vaughan, Bartels, Carpenter, Burns.



## GIRLS' HOCKEY---continued

### MONTROSE GIRLS' SCHOOL 0—5

In the first game of the season, at home, the Keystone girls, most of whom had never played hockey before, were quite surprised to discover with what ease they held Montrose in check.

### WYOMING SEMINARY 1—1

The Keystone girls traveled to Wyoming Seminary for the second game of the season, and held their opponents to a tie, which is the first time this had been done in Keystone hockey history.

### WILKES-BARRE INSTITUTE 1—0

The first defeat of the season was suffered at the hands of Wilkes-Barre Institute, on our home field. Since these girls are unusually excellent players, no one was too badly disappointed, and the Keystone girls enjoyed playing with such masters of technique.

### CLARK'S SUMMIT HIGH SCHOOL 6—1

A second defeat followed on the heels of the first, on Clark's Summit field. The Keystone girls were unused to playing on anything but a grassy field, so that they had a great deal of difficulty becoming accustomed to the hard, worn field on which they played. An unusual incident in the game was the occurrence of a foul which called for a penalty bully, which was taken by Lane, of Keystone, and Wignall, of Summit.





GIRLS' HOCKEY---continued

WYOMING SEMINARY 1--1

In a return game, played on Keystone's field, the Keystone team held Seminary to another tie, of which the score was the same as the first.

## CLARK'S SUMMIT HIGH SCHOOL 2-2

In a second encounter with Clark's Summit, we were set to avenge our former defeat at their hands, but the best we could do was to hold them to a tie. This game, played on a Saturday morning, was thoroughly enjoyed, for it, in contrast to the first, was played on our field.

## MONTROSE GIRLS' SCHOOL 1—3

This game might well be termed the most amusing of the season. It was played on Montrose's field, which is hilly and full of stubbles, on the coldest day the team had yet experienced. As a result, there was a session of wholesale slaughter, which was in a small degree offset by the nondescript assortment of heavy clothes worn under the hockey tunics—ski pants, men's overalls, and extra layers of socks.

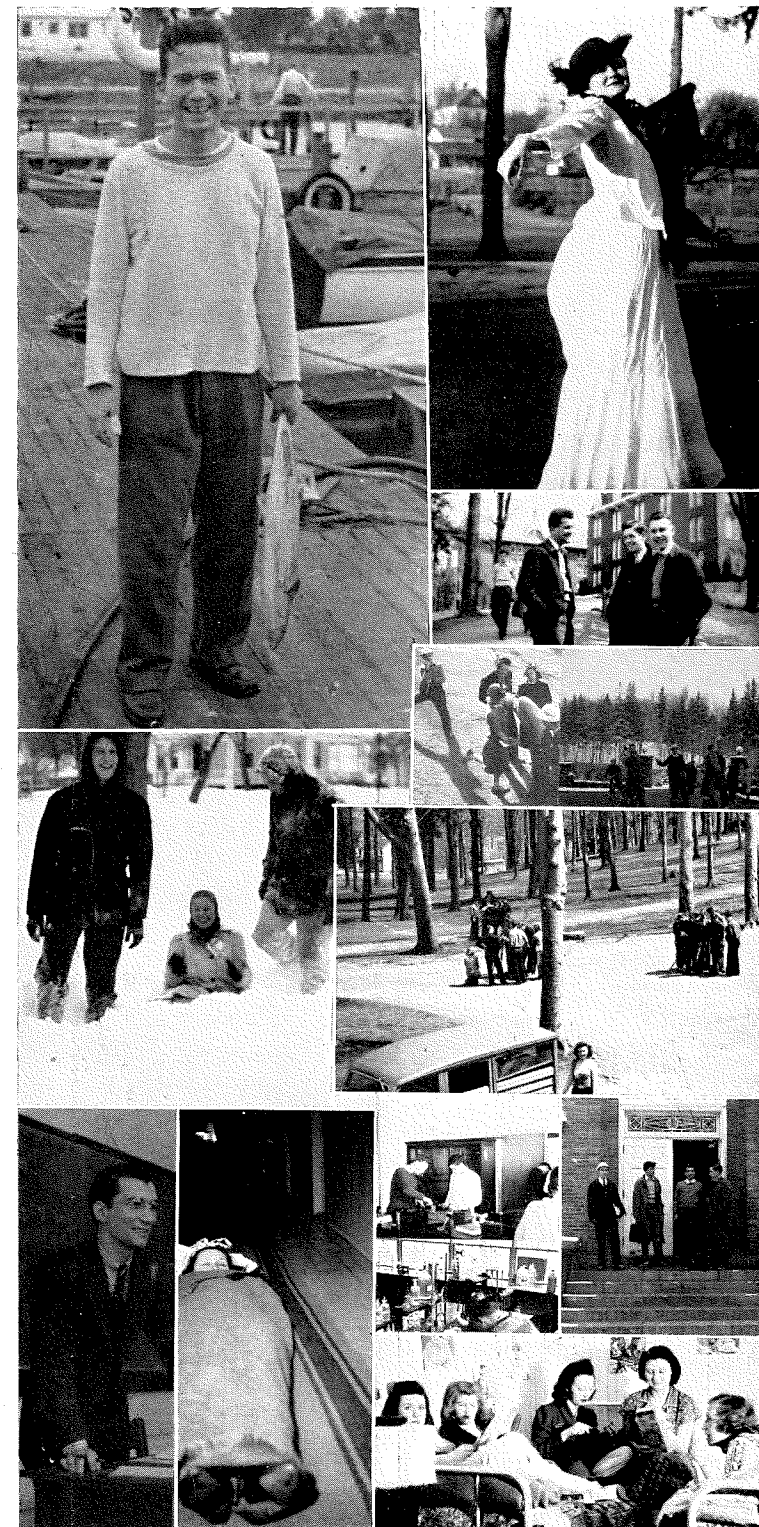
## WILKES-BARRE INSTITUTE 0-0

The final game of the season was played at Institute, when Keystone held its opponents to a scoreless tie. Following this game, a ghost party was held in Pudgie's barn, for all who came out for hockey this season.

## PLAYERS AND ASSISTANT MANAGERS

Evelyn Baer  
Helen Bartels  
Jean Evans  
Romaine Finn  
Jeanne Gordon  
Freida Gutheinz  
Edith Kleinman  
Wilmine Lane  
Rita Maholchic  
Jean McAndrew  
Madelyn O'Hara  
Evelyn Sailer

Aimee Sobott  
Veronica Tetlock  
Florence Tomillo  
Jean Vaughan  
Wanda Wagner  
Nancy Williams  
Claire Wydeen  
Jeanne Zug  
Mary Gibbons  
Marjorie Heebner  
Barbara Burns  
Lyla Carpenter



Prof. Burton Gildersleeve  
proves his visit to Florida was  
worthwhile . . . Helen Warrick  
displays her Gay 90's outfit . . .

Ghirelli, Smith, Pritchard discuss the cameraman.

Bob Green, Miss Clasen, Bruce Bloxham enjoy the St. Valentine's Day blizzard . . . Heckman and Gordon in the Emotion Test . . . Thumb fun.

Engineers learn surveying.

Mr. Trapani, lecturing his Math class. Must be funny . . . Helen Warrick spends a night in the hallway . . . Chem students showing their stuff . . . Home-ward bound . . . Cottage "Bull Session."